

Wenzhou Kunfeng Electric Co., Ltd



Catalogue



Wenzhou Kunfeng Electric Co., Ltd located in YueQing, the electrical capital of China, is a provider of power transmission and distribution system equipment.

We dedicated in Switchgear, SF6 Breaker , vacuum circuit breakers, Insulator , load switches, drop fuse breakers, lightning arrester and vacuum interrupters, which are widely used in the power systems , network of thermal power generation, hydro power generation, metallurgy, chemical industry, petroleum, coal, municipal transmission and distribution equipment and other industries.

The Switchgear factory is located in Wenzhou City, Zhejiang Province. It was established in 2010, covers an area of 126 acres, has a registered capital of 300 million yuan, and has more than 800 employees. The factory has ISO9001&ISO14001&ISO45001 certifications. The factory has 115 patents, including 9 invention patents. It has imported CNC punching machines, Mitsubishi laser cutting machines, ABBMIG welding robots, automated assembly lines, vacuum box leak detection systems and other advanced production and scientific research monitoring equipment. It has won honorary titles such as "National High-tech Enterprise", "Zhejiang Technology Enterprise", "Wenzhou National Self-Created Zone Innovative Leading Enterprise", and "Wenzhou Green Low-carbon Factory".



Vision and Mission

Kunfeng's vision and mission is to deliver electricity safely, green and efficiently to everyone in the rapid economic development, Perfect quality system, provide high-quality products and after-sales service for each customer, support OEM and strive to be a national brand.

Wenzhou Kunfeng Electric Co., Ltd

Address: Liushi Town Yueqing City Wenzhou City ,Zhejiang Province

Tel/Whats App: +86 18321737649

Email: lanxiong971@gmail.com



Product catalogue



MGC-11/24/33kV Series Sf6 Gas Insulated Ring Main Unit

Product Overview-----6

Technical Parameters-----14

Typical Solutions-----18

MGA-11kV Series Environmentally Friendly Gas Insulated Ring Main Unit

Product Overview-----20

Technical Parameters-----25

Typical Solutions-----26

MAX-11kV Series Environmentally Friendly Gas Insulated Ring Main Unit(C-GIS)

Product Overview-----28

Technical Parameters-----31

Typical Solutions-----32

Product catalogue



MGX-33kV Series Sf6 Gas Insulated Ring Main Unit (C-GIS)

Product Overview-----34

Technical Parameters-----37

Typical Solutions-----38

MXGN Series Air Insulated Ring Main Unit

Product Overview-----40

Technical Parameters

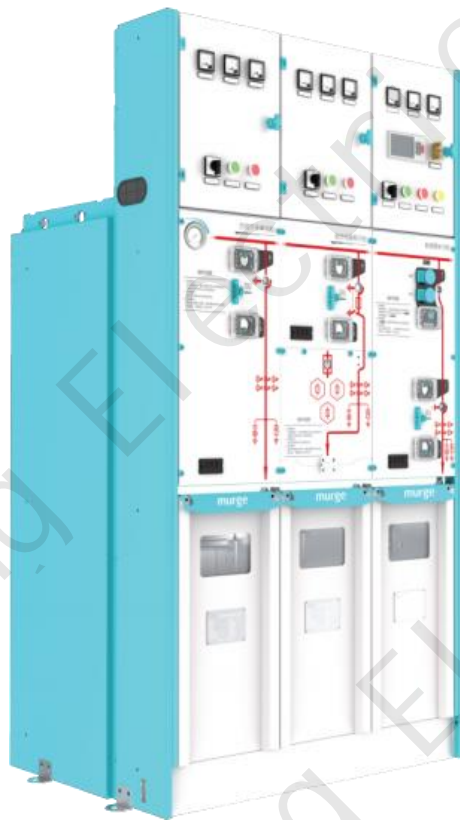
Typical Solutions-----60

MGW Series Outdoor High Voltage Ring Box

Product Overview-----61

Installation Dimensions----67

Rain Main Unit Switchgear



MGC-11/24/33kV Series Sf6 Gas Insulated Ring Main Unit



Product Overview

The MGC series Sf6 gas-insulated compact ring main unit (RMU) is a new type of gas-insulated medium-voltage switchgear independently developed by Kunfeng Electric. The product adopts a modular design and can be arranged arbitrarily according to different design schemes to achieve a perfect combination of common box units and extended units, meeting the needs of various secondary transmission and distribution substations for flexible use of compact switchgear.

The MGC series switchgear is a completely sealed system. All its primary components are enclosed in a stainless steel shell and are not affected by the environment. It has the characteristics of reliable operation, safety guarantee, compact deconstruction design, small footprint, maintenance-free, and long life.

The product has passed the type test of the National High Voltage Electrical Appliance Test Center and is widely used in small secondary distribution stations, box-type switchgear, industrial and mining enterprises, airports, railways, commercial areas, high-rise buildings, highways, subways, tunnels and places with harsh natural conditions.

Production standards:

IEC 62271-103

IEC 62271-100

IEC 62271-105

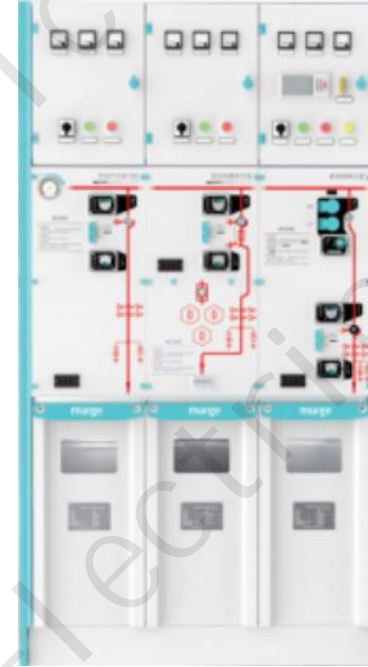
IEC 62271-102

IEC 62271-200

IEC 62271-1

IEC 60529

IEC 60071-1



Product Overview

Product Model:

KGC-11 (U) /630- 25

KCG :Enterprise No.

11: Rated Voltage(11/24/33kV)

U: Switch type (C、F、V)

630: Rated Current (630A/1250A)

25:Rated short-time withstand current(20/25/31.5kA)

Layout of main components of circuit breaker unit:

1. Main switch mechanism
2. Operation panel
3. Isolation mechanism
4. Cable compartment
5. Secondary control box
6. Busbar connection bushing
7. Arc extinguishing device
8. Isolation switch
9. Internal pressure relief device of the box



Product Overview

Circuit breaker operating mechanism:

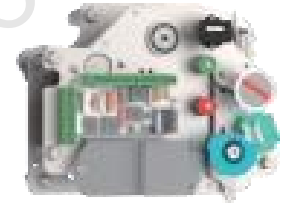
The circuit breaker mechanism with fast reclosing function has a complete interlocking device and rigid interlocking method, which is safe and reliable, and can prevent misoperation to the greatest extent. The operation control unit is integrated and modularized, and placed in the front for easy maintenance.

Disconnecter operating mechanism:

The isolating switch mechanism with a single spring and double operating hole structure adds an interlocking module with the circuit breaker mechanism on the basis of the load switch mechanism. It adopts a rigid interlocking method, which is safe and reliable, and can prevent misoperation to the greatest extent. The control unit is integrated and modularized, and placed in the front for easy maintenance.

Circuit breaker switch:

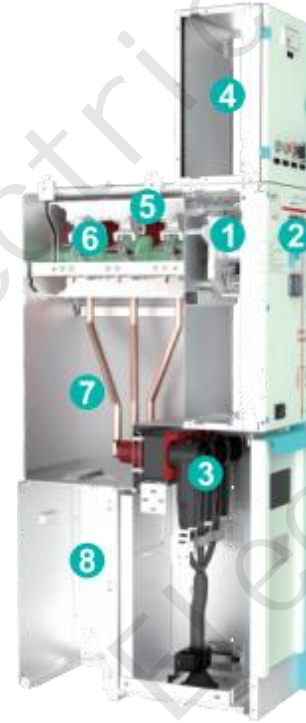
The circuit breaker adopts the transmission mode of cam structure, the arc extinguishing chamber adopts the fixed mode of end face connection, the overtravel and opening distance parameters are stable, the contact surface of the isolating switch conductor is optimized to improve the conductivity and operation stability, and the high-quality insulating material is used to ensure that the partial discharge of the material is $\leq 20\text{pC}$ at 1.1 times the rated voltage.



Product Overview

Layout of main components of load switch unit

1. Load switch mechanism
2. Operation panel
3. Cable compartment
4. Secondary control box
5. Busbar connection bushing
6. Three-position load switch
7. Fully enclosed box
8. Internal pressure relief device of the box



Product Overview

Load switch operating mechanism:

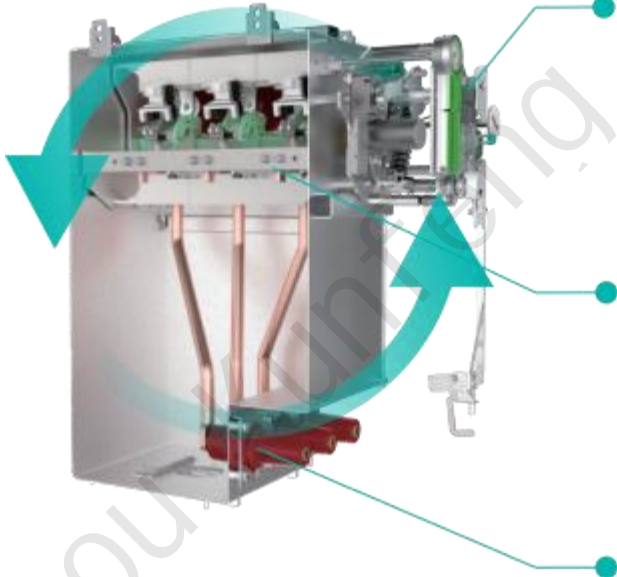
The load switch mechanism with single spring and double operation hole structure has compact structure, few parts, high transmission output efficiency, and adopts rigid interlocking mode, which is safe and reliable, and can prevent misoperation to the greatest extent. The operation control unit is integrated and modularized, and placed in front for easy maintenance.

Load switch:

The optimized design of the conductor contact surface of the load switch improves the conductivity and operation stability. It uses high-quality insulating materials and uses arc extinguishing grids to extinguish arcs, ensuring that the partial discharge of the product is $\leq 20\text{pC}$ at 1.1 times the rated voltage.

Branch bus module:

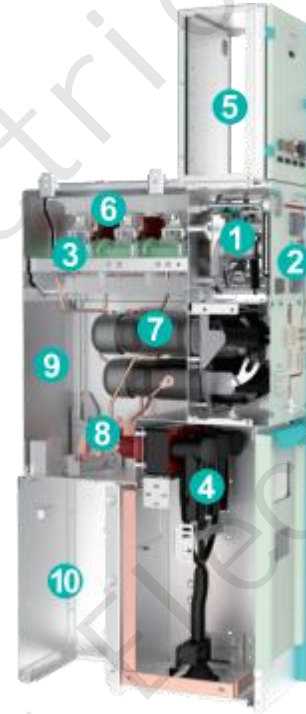
The branch busbar is manufactured by a dedicated busbar processing center and 100% inspected by special inspection tools to ensure processing and bending accuracy. It can be packaged and sold with matching pipes.



Product Overview

Layout of main components of combined electrical unit:

1. Combined electrical mechanism
2. Operation panel
3. Three-position load switch
4. Cable room
5. Secondary control box
6. Busbar connection bushing
7. Fuse tube
8. Lower grounding switch
9. Fully enclosed box
10. Pressure relief device inside the box



Product Overview

Combined electrical mechanism:

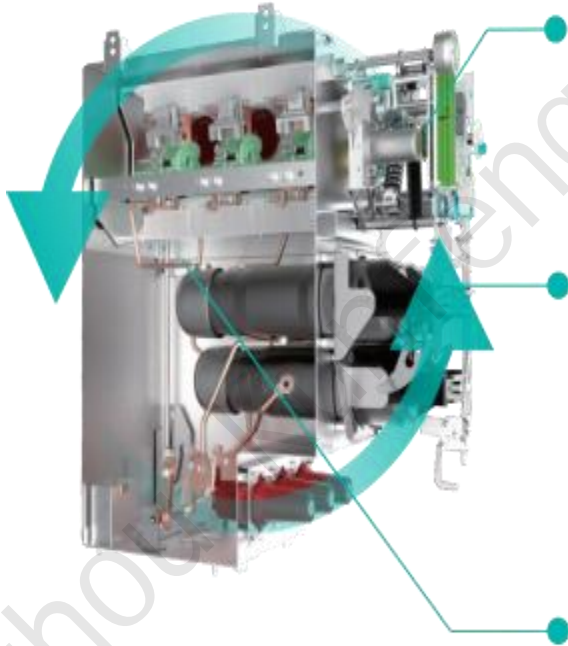
Combined electrical mechanism with fast opening and tripping function adopts splint structure, good stability, high reliability, long life, operation control unit integrated module, front placement, easy maintenance

Fuse cartridge:

The three-phase fuse barrel is arranged in an inverted triangle structure and is completely sealed with the gas box surface by a sealing ring, which can ensure that the switch operation is not affected by the external environment. When any phase fuse is blown, the striker is triggered, and the quick-release mechanism quickly trips to open the load switch, thereby ensuring that the transformer will not have the risk of phase loss

Lower earth switch:

The lower grounding switch used in combined electrical appliances has a reliable transmission device and an optimized conductor contact surface design to improve conductivity and operational stability.



KGC-11KV/630A Ring Main Unit Main Technical Parameters

No.	Item		Unit	Load switch unit	Combiner Unit	Circuit breaker unit		
1	Rated Voltage		kV	11	11	11		
	Rated Frequency		Hz		50	50		
2	Rated Current		A	630	Depends on fuse current	630		
3	Rated Insulation Level	1min power frequency withstand voltage	Phase to Phase,Phase to Earth	kV		42	42	
			Open Contact	kV	48	48	48	
		Lightning impulse withstand voltage	Control and auxiliary circuits	kV		2	2	2
			Phase to Phase,Phase to Earth	kV	75	75	75	75
		Open Contact	kV		85	85		
4	Rated short-time withstand current		kA/s	20、25/4	/	20、25/4		
5	Rated peak withstand current		kA		/	50、63		
6	Rated short-circuit breaking current		kA	/	Limited by high voltage fuse	20、25		
7	Rated short-circuit making current		kA		Limited by high voltage fuse	50、63		
8	Rated transfer current		A	/	1700	/		
9	Rated active load breaking current		A		/	/		
10	Rated closed-loop breaking current		A	630	/	/		
11	Rated operating sequence		/	/	/	O-0.3s-CO-180s-CO		
12	Mechanical life	Load switch/circuit breaker	Times	10000	10000	10000		
		Disconnecter/earthing switch	Times	3000	3000	3000		
13	Loop resistance		$\mu\Omega$	≤ 150		≤ 150		
14	Rated inflation pressure (gauge pressure at 20°C)		MPa		0.04			
15	Annual relative gas leakage rate		year		SF6	$\leq 0.01\%$		
16	Protection level	Isolation Room (IP)	/		IP2XC			
		Air box (IP)	/		IP67			
		Cabinet (IP)	/		IP41			
		Cabinet (IK)	/		IK10			
17	Arcing test (fault current/duration)		kA/s		20/1、25/0.5			



KGC-24KV/630A Ring Main Unit Main Technical Parameters

No.	Item		Unit	Load switch unit	Combiner Unit	Circuit breaker unit	
1	Rated Voltage		kV	24	24	24	
	Rated Frequency		Hz		50	50	
2	Rated Current		A	630	Depends on fuse current	630	
3	Rated Insulation Level	1min power frequency withstand voltage	Phase to Phase,Phase to Earth	kV		65	65
			Open Contact	kV	79	79	79
		Lightning impulse withstand voltage	Control and auxiliary circuits	kV		2	2
			Phase to Phase,Phase to Earth	kV	125	125	125
		Open Contact	kV		145	145	
4	Rated short-time withstand current		kA/s	20、25/4	/	20、25/4	
5	Rated peak withstand current		kA		/	50、63	
6	Rated short-circuit breaking current		kA	/	Limited by high voltage fuse	20、25	
7	Rated short-circuit making current		kA		Limited by high voltage fuse	50、63	
8	Rated transfer current		A	/	1400	/	
9	Rated active load breaking current		A		/	/	
10	Rated closed-loop breaking current		A	630	/	/	
11	Rated operating sequence		/	/	/	O-0.3s-CO-180s-CO	
12	Mechanical life	Load switch/circuit breaker	Times	5000	5000	10000	
		Disconnector/earthing switch	Times	3000	3000	3000	
13	Loop resistance		$\mu\Omega$	≤ 150		≤ 150	
14	Rated inflation pressure (gauge pressure at 20°C)		MPa		0.04		
15	Annual relative gas leakage rate		year		$\leq 0.01\%$		
	Insulating gas				SF6		
16	Protection level	Isolation Room (IP)	/		IP2XC		
		Air box (IP)	/		IP67		
		Cabinet (IP)	/		IP41		
		Cabinet (IK)	/		IK10		



KGC-11KV/1250A Ring Main Unit Main Technical Parameters

No.	Item		Unit	Circuit breaker unit	
1	Rated Voltage		kV	24	
	Rated Frequency		Hz	50	
2	Rated Current		A	1250	
3	Rated Insulation Level	1min power frequency withstand voltage	Phase to Phase,Phase to Earth	kV	42
			Open Contact	kV	48
		Lightning impulse withstand voltage	Control and auxiliary circuits	kV	2
			Phase to Phase,Phase to Earth	kV	75
		Open Contact	kV	85	
4	Rated short-time withstand current		kA/s	25、31.5/4	
5	Rated peak withstand current		kA	63、80	
6	Rated short-circuit breaking current		kA	25、31.5	
7	Rated short-circuit making current		kA	63、80	
11	Rated operating sequence		/	0-0.3s-CO-180s-CO	
12	Mechanical life	Load switch/circuit breaker	Times	10000	
		Disconnecter/earthing switch	Times	3000	
13	Loop resistance		$\mu\Omega$	≤ 150	
14	Rated inflation pressure (gauge pressure at 20°C)		MPa	0.04	
15	Annual relative gas leakage rate		year	$\leq 0.01\%$	
	Insulating gas			SF6	
16	Protection level	Isolation Room (IP)	/	IP2XC	
		Air box (IP)	/	IP67	
		Cabinet (IP)	/	IP41	
		Cabinet (IK)	/	IK10	
17	Arcing test (fault current/duration)		kA/s	31.5/0.5	



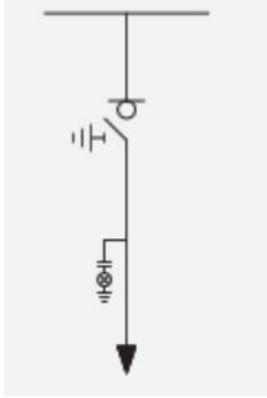
KGC-40.5 Ring Main Unit Main Technical Parameters

No.	Item		Unit	Load switch unit	Combiner Unit	Circuit breaker unit	
1	Rated Voltage		kV	33	33	33	
2	Highest Voltage		kV	40.5	40.5	40.5	
3	Rated Frequency		Hz	50	50	50	
4	Rated Current		A	630	Depends on fuse current	630	
5	Rated Insulation Level	1min power frequency withstand voltage	Phase to Phase,Phase to Earth	kV	95	95	95
			Open Contact	kV	118	118	118
		Lightning impulse withstand voltage	Control and auxiliary circuits	kV	2	2	2
			Phase to Phase,Phase to Earth	kV	185	185	185
		Open Contact	kV	215	215	215	
6	Rated short-time withstand current		kA/s	25/4	/	25/4	
7	Rated peak withstand current		kA	63	/	63	
8	Rated short-circuit breaking current		kA	/	80(Depends on the fuse)	25	
9	Rated short-circuit making current		kA	/	31.5(Depends on the fuse)	63	
10	Rated transfer current		A	/	840	/	
11	Rated closed-loop breaking current		A	630	/	630	
12	Rated operating sequence		/	/	/	O-0.3s-CO-180s-CO	
13	Mechanical life	Load switch/circuit breaker	Times	5000	5000	10000	
		Disconnecter/earthing switch	Times	3000	3000	3000	
14	Loop resistance		μΩ	≤150		≤150	
15	Rated inflation pressure (gauge pressure at 20°C)		MPa		0.04		
16	Annual relative gas leakage rate insulating gas		year		SF6 ≤0.01%		
17	Protection level	Isolation Room (IP)	/		IP2XC		
		Air box (IP)	/		IP67		
		Cabinet (IP)	/		IP41		
		Cabinet (IK)	/		IK10		

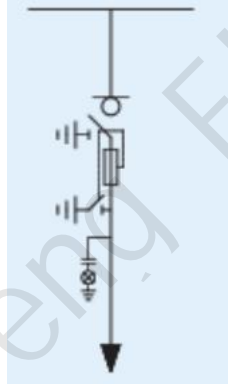


Typical Solutions

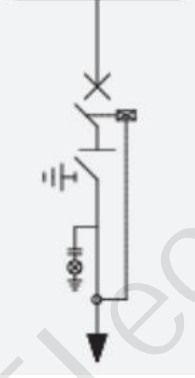
C load switch unit



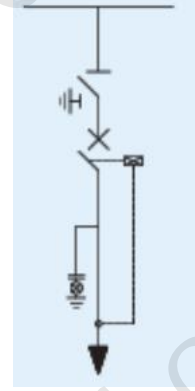
F combination electrical unit



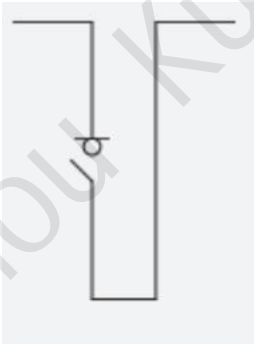
V circuit breaker lower isolation unit



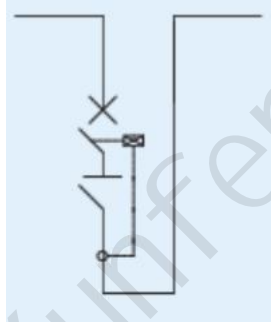
V circuit breaker upper isolation unit



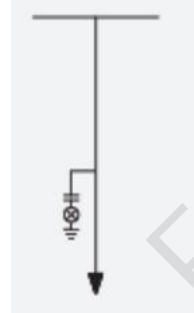
SI load switch segment unit



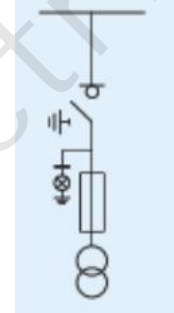
Sv circuit breaker busbar section unit



D Busbar connection unit



CPT Unit



Note: The basic units can be combined to form a shared box solution as needed, with a maximum of 6 units in a box to meet the customer's personalized customization needs



Installation Dimensions

The cabinet depth of the 11kV standard machine is 750mm, the cabinet height is 1450mm (without instrument box), and the optional height of the instrument box is 200mm, 350mm, and 470mm.

Nonsegregated Box Unit	1	2	3	4	5	6
Gas box clear width	325	650	975	1300	1625	1950

Note: The total width of the cabinet is determined by the end panels in the user's plan;
Standardized cabinet sizes can also be provided based on user needs



KGA-11 Series of environmentally friendly gas insulated ring main unit



Product Introduction: KGA series environmentally friendly gas-insulated AC metal-enclosed switchgear and control equipment is an environmentally friendly gas-insulated medium-voltage switchgear independently developed by Kunfeng Electric. It has the characteristics of green environmental protection, reliable operation, safety guarantee, compact structure design, small space occupation, maintenance-free, long life, strong environmental adaptability, etc.

This switchgear is a completely sealed system. All live parts and switches of the primary components are enclosed in a stainless steel housing and are not affected by the environment. The product adopts a modular design and can be arranged arbitrarily according to different design schemes to achieve a combination of common box type and extended type units to meet the needs of various secondary transmission and distribution substations for compact switchgear.

MGA series switchgear has passed the type test of the National High Voltage Electrical Equipment Test Center. It can be widely used in small secondary distribution stations, box-type switchgear, industrial and mining enterprises, airports, railways, commercial areas, high-rise buildings, highways, subways, tunnels and places with harsh natural conditions.

Product Model :

KGA-11 (U) /630-20

KCG :Enterprise No.

11: Rated Voltage(11/24/33kV)

U: Switch type (C、F、V)

630: Rated Current (630A/1250A)

25:Rated short-time withstand current(20/25/31.5kA)





Product Overview

Layout of main components of environmental protection cabinet:

1. Main switch mechanism
2. Operation panel
3. Isolation mechanism
4. Cable room
5. Secondary control box
6. Busbar connection bushing
7. Isolation switch
8. Arc extinguishing device
9. Fully enclosed box
10. Pressure relief device inside the box

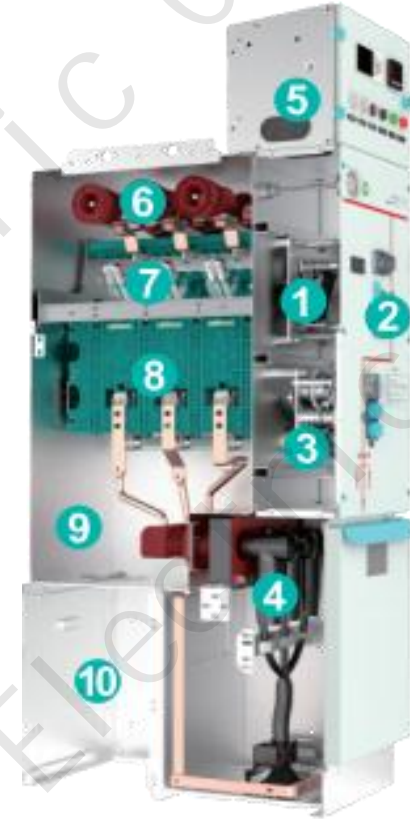
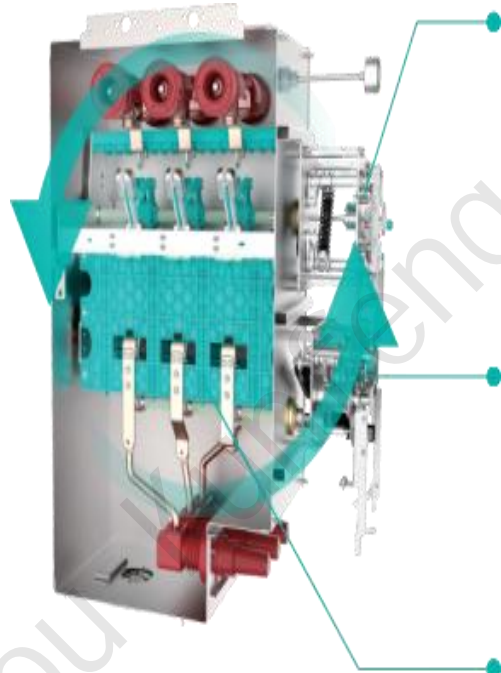


Diagram of the core components of the circuit breaker unit (upper isolation)



Isolating switch mechanism:

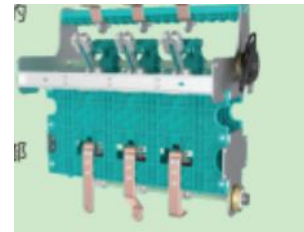
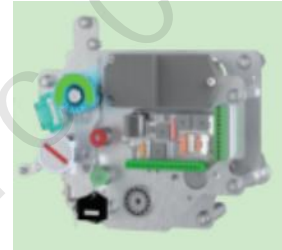
The isolating switch mechanism with a single spring and double operating hole structure adds an interlocking module with the circuit breaker mechanism on the basis of the load switch structure. It adopts a rigid interlocking method, which is safe and reliable and can prevent misoperation to the greatest extent; the operating control unit is integrated and modularized, and placed in the front for easy maintenance

Vacuum switch mechanism:

Circuit breaker mechanism with fast reclosing function. It has a complete interlocking device and rigid interlocking method, which is safe and reliable, and can prevent misoperation to the greatest extent. The operation control unit is integrated with modular front placement for easy maintenance

Vacuum switch components:

The vacuum switch adopts a cam structure transmission method, the arc extinguishing chamber adopts an end-face connection fixing method, the overtravel and opening distance parameters are stable, and the upper isolation structure is adopted, which meets the IEC standardization and customization requirements; high-quality insulating materials are used. Ensure that the partial discharge of the product at 1.1 times the rated voltage is $\leq 20\text{pC}$; adopt voltage equalization measures to ensure electric field balance, and no additional insulating partition is required between phases



Circuit breaker unit core components diagram(Lower isolation)

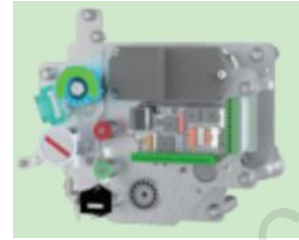
Vacuum switch structure:

Circuit breaker mechanism with fast reclosing function; It has a complete interlocking device and rigid interlocking method, which is safe and reliable, and can prevent misoperation to the maximum extent.

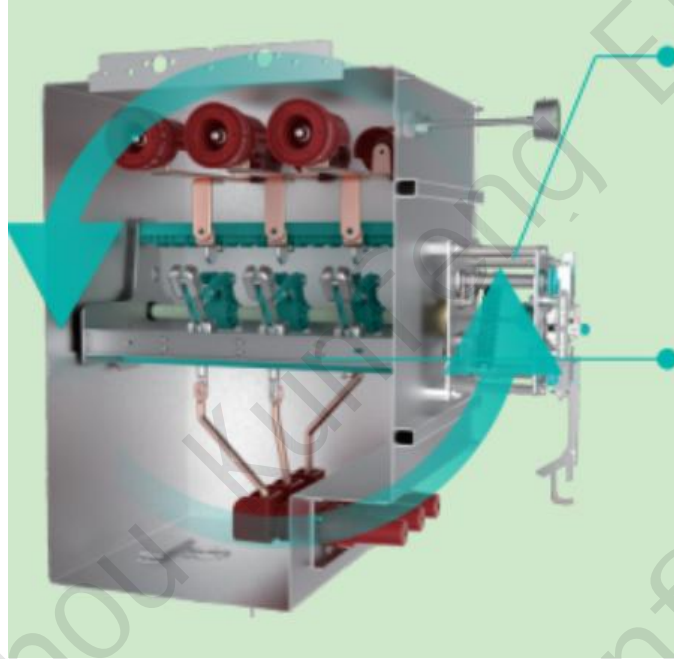
Isolating switch mechanism: Isolating switch mechanism with single spring and double operating hole structure; on the basis of load switch mechanism, add interlocking module with circuit breaker mechanism; adopt rigid interlocking method, which is safe and reliable, and can prevent misoperation to the maximum extent. The operation control unit is integrated and modularized and placed in front for easy maintenance

Vacuum switch components:

The vacuum switch adopts the transmission method of cam structure, and the arc extinguishing chamber adopts the fixed method of end face connection. The overtravel and opening distance parameters are stable. It adopts upper isolation structure, which meets the customization requirements. It adopts high-quality insulating materials to ensure that the partial discharge at 1.1 times the rated voltage is $\leq 20\text{pC}$. The voltage equalization measures are adopted to ensure the balance of electric field. No additional insulating partition is required between phases.



Isolating switch core components diagram



Disconnecter operating mechanism:

KJG (Vs) series disconnector operating mechanism can be sold as a spring operating mechanism dedicated to KGA series switch equipment. This mechanism is mainly used with VKA series disconnectors and is used for the opening, closing and grounding of three-position disconnectors.

Isolating switch components

The isolating switch adopts a three-position design of closing, opening and grounding, which is stable, safe and reliable in operation. The contact surface of the isolating switch conductor is optimized. The conductivity and operation stability are improved. High-quality insulating materials are used to ensure that the partial discharge of the product at 1.1 times the rated voltage is $\leq 20\text{pC}$. Voltage equalization measures are adopted to ensure electric field balance. No additional insulating partition is required between phases.



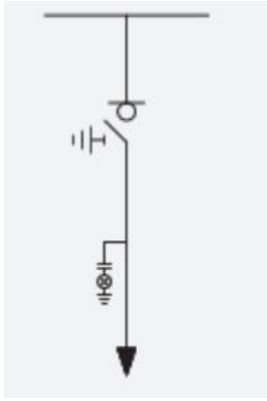
Technical Parameters

No.	Item		Unit	Load switch unit	Combiner Unit	Circuit breaker unit	
1	Rated Voltage		kV	11	11	11	
3	Rated Frequency		Hz	50	50	50	
4	Rated Current		A	630	Depends on fuse current	630	
5	Rated Insulation Level	1min power frequency withstand voltage	Phase to Phase,Phase to Earth	kV	42	42	42
			Open Contact	kV	48	48	48
			Control and auxiliary circuits	kV	2	2	2
		Lightning impulse withstand voltage	Phase to Phase,Phase to Earth	kV	75	75	75
Open Contact	kV		85	85	85		
6	Rated short-time withstand current		kA/s	20/4	/	20/4	
7	Rated peak withstand current		kA	50	/	50	
8	Rated short-circuit breaking current		kA	/	Limited by high-voltage fuses	20	
9	Rated short-circuit making current		kA	50	Limited by high-voltage fuses	50	
10	Rated active load breaking current		A	630	/	/	
11	Rated closed-loop breaking current		A	630	/	/	
12	Rated operating sequence		/	/	/	0-0.3s-CO-180s-CO	
13	Mechanical life	Load switch/circuit breaker	Times	10000	10000	10000	
		Disconnectors/earthing switch	Times	3000	3000	3000	
14	Loop resistance		$\mu\Omega$	≤ 150		≤ 150	
15	Rated inflation pressure (gauge pressure at 20°C)		MPa		0.02		
16	Annual relative gas leakage rate		year		$\leq 0.01\%$		
	Insulating gas				N2		
17	Protection level	Isolation Room (IP)	/		IP2XC		
		Air box (IP)	/		IP67		
		Cabinet (IP)	/		IP41		
		Cabinet (IK)	/		IK10		
18	Arcing test (fault current/duration)		kA/s		20/1		

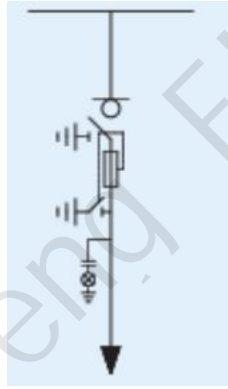


Typical Solutions

C load switch unit



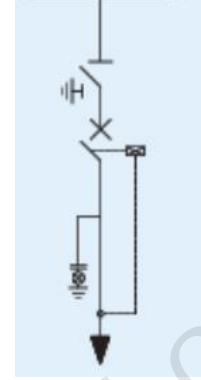
F combination electrical unit



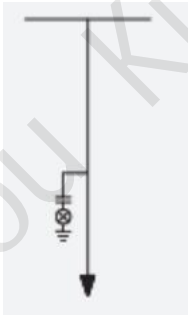
V circuit breaker lower isolation unit



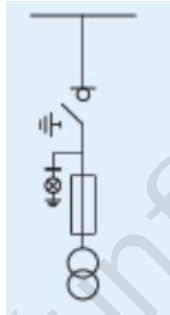
V circuit breaker upper isolation unit



D Busbar connection unit



CPT Unit



Note: The basic units can be combined to form a shared box solution as needed, with a maximum of 4 units in a box to meet the customer's personalized customization needs



Installation Dimensions

Type		Width(W) mm	Height(H) mm	Depth(D) mm
C	wide top	420	1950	850
	wide side	420	2000	
V	wide top	420	1950	
	wide side	420	2000	
PT	wide top	600	1950	
	wide side	600	2000	
D	wide top	420	1950	
	wide side	420	2000	



KAX-11 Series environmentally friendly gas insulated switchgear (C-GIS)



Introduction:

KAX series environmentally friendly gas insulated switchgear (environmentally friendly C-GIS) is a new generation of switchgear products developed by Kunfeng with independent intellectual property rights. It uses slightly positive pressure N₂ gas as the insulating medium, vacuum circuit breaker and three-position switch as the main primary components, sealed inside the gas-filled isolation chamber. The gas chamber is welded with 3mm thick high-quality stainless steel, which is not affected by the environment. It has the characteristics of green environmental protection, reliable operation, safety guarantee, compact structure design, small space occupation, maintenance-free, long life, strong environmental adaptability, etc.

Product Model: KAX-11/T-A-B

KCG :Enterprise No.

11: Rated Voltage(11kV)

T: Spring mechanism

A: Rated Current (630A/1250A)

B:Rated short-time withstand current(20/25/31.5kA)



Product Overview



Layout of main components in the cabinet :

1. Main switch mechanism
2. Isolation mechanism
3. Cable room
4. Secondary control box
5. Busbar connection bushing
6. Isolation switch
7. Arc extinguishing device
8. Fully enclosed box
9. Internal pressure relief device of the box



Core component diagram

SAX-12/T direct-acting three-position switch components:

Direct-acting three-position switch, uniform electric field distribution, high dynamic thermal stability; three-position switch operating mechanism adopts double-hole operation, with reliable mechanical and electrical interlocking; modular integrated electric control equipment is adopted to reduce secondary components and improve control reliability



VAX-12/T circuit breaker switch components:

Independent intellectual property rights;
Modular design concept;
Reliable five-protection interlocking design;
Optimized transmission structure, further improving transmission size and reliability



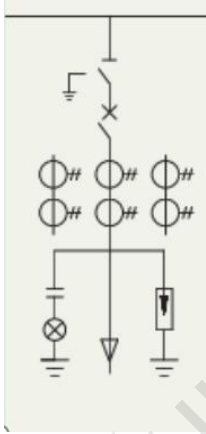
Technical Parameters

No.	Item		Unit	Circuit breaker unit	
1	Rated Voltage		kV	11	
	Rated Frequency		Hz	50	
2	Rated Current		A	1250/2500/3150	
3	Rated Insulation Level	1min power frequency withstand voltage	Phase to Phase,Phase to Earth	kV	42
			Open Contact	kV	48
		Lightning impulse withstand voltage	Control and auxiliary circuits	kV	2
			Phase to Phase,Phase to Earth	kV	75
		Open Contact	kV	85	
4	Rated short-time withstand current		kA/s	25、31.5、40/4	
5	Rated peak withstand current		kA	63、80、100	
6	Rated short-circuit breaking current		kA	25、31.5、40	
7	Rated short-circuit making current		kA	63、80、100	
11	Rated operating sequence		/	0-0.3s-CO-180s-CO	
12	Mechanical life	Load switch/circuit breaker	Times	20000	
		Disconnecter/earthing switch	Times	5000	
13	Loop resistance	1250A	$\mu\Omega$	≤ 120	
		2500A	$\mu\Omega$	≤ 80	
		3150	$\mu\Omega$	≤ 80	
14	Rated inflation pressure (gauge pressure at 20°C)		MPa	0.02	
15	Annual relative gas leakage rate		year	$\leq 0.01\%$	
	Insulating gas			N2	
16	Protection level	Isolation Room (IP)	/	IP2XC	
		Air box (IP)	/	IP67	
		Cabinet (IP)	/	IP41	
		Cabinet (IK)	/	IK10	
17	Arcing test (fault current/duration)		kA/s	31.5/1 40/0.5	

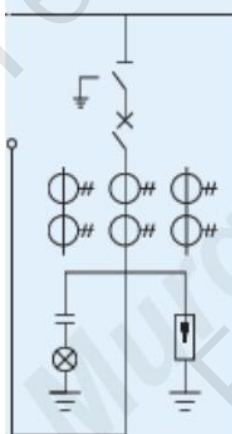


Typical solutions

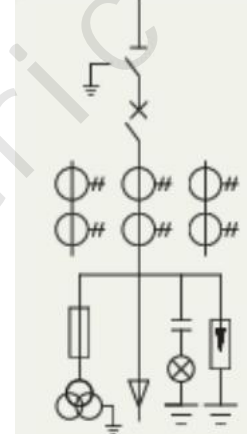
Cable inlet (outlet) cabinet:



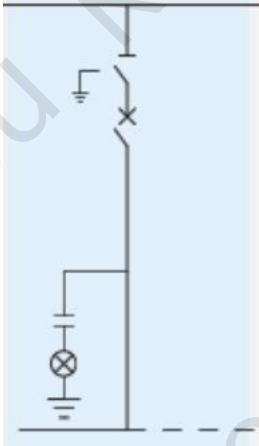
Overhead inlet cabinet



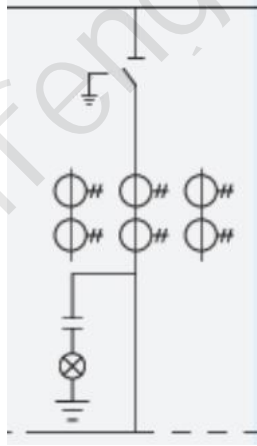
Inlet (with PT) cabinet



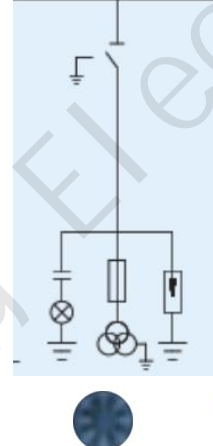
Sectional circuit breaker cabinet :



Sectional isolation cabinet



PT cabinet



Installation dimension

Rated current (A)	1250	2500	3150
Cabinet width (mm)	600	800	1000

Technical requirements

Cabinet width (mm)	600	800	1000
L1 Cabinet width (mm)	430	630	830

- 1.Switchgear can be bolted to the foundation steel channel or welded to the foundation channel steel;
- 2.The laying of the foundation channel steel should ensure flatness, and the unevenness per meter shall not exceed 1mm;
- 3.The foundation should be able to withstand the maximum static load of the switch cabinet of 2000kg and the maximum impact load of 3000kg



KGX-33Series SF6 Gsa Insulated Swithgear (C-GIS)



Product Introduction: KAX series gas-insulated switchgear (C-GIS) is a new generation of switchgear products with independent intellectual property rights developed by Kunfeng Company. It uses low-pressure SF6 gas as the insulating medium, vacuum circuit breakers and three-position switches as the main primary components, sealed inside the gas-filled isolation, and the gas chamber is welded with 3mm thick high-quality stainless steel, which is not affected by the environment. It has the characteristics of reliable operation, safety guarantee, compact structure design, small space occupation, maintenance-free, and long life.

KGX series switchgear is a complete set of equipment distribution equipment for 33kV three-phase AC 50HZ single busbar and single busbar segmentation system, mainly used for power generation companies, small and medium-sized generators, industrial and mining enterprises, and power system substations, power transmission and large high-voltage motor starting, etc., to implement control, protection and detection.

Product Model :

KGX-33/T-A-B

KCX :Enterprise No.

33: Rated Voltge(33kV)

T: Spring mechanism

A: Rated Current

B:Rated short-time withstand current



Layout of main components in the cabinet



1. Main switch mechanism
2. Isolation mechanism
3. Cable room
4. Secondary control box
5. Busbar connection bushing
6. Isolation switch
7. Arc extinguishing device
8. Fully enclosed box
9. Pressure relief device inside the box



Core component diagram

SMX-40.5/T direct-acting three-position switch components:

Adopt direct-acting three-position switch, with uniform electric field distribution and dynamic thermal stability;
The three-position switch operating mechanism adopts double-hole operation, with reliable mechanical and electrical interlocking;
Adopt modular integrated electric control equipment to reduce secondary components and improve control reliability



VMX-40.5/T circuit breaker switch components

Independent intellectual property rights;
Modular design concept;
Reliable five-protection interlocking design;
Optimized transmission structure to further improve transmission efficiency and reliability



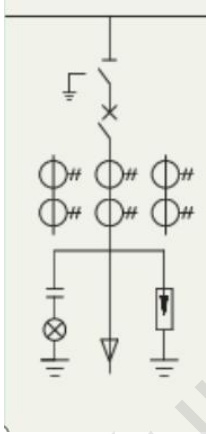
Technical Parameters

No.	Item		Unit	Circuit breaker unit	
1	Rated Voltage		kV	33	
2	Highest Voltage		kV	40.5	
3	Rated Frequency		Hz	50	
4	Rated Current		A	1250/2500/1150	
5	Rated Insulation Level	5min power frequency withstand voltage	Phase to Phase, Phase to Earth	kV	95
			Open Contact	kV	118
	lightning impulse withstand voltage	Control and auxiliary circuits	kV	2	
		Phase to Phase, Phase to Earth	kV	185	
6	Rated short-time withstand current		kV	215	
5	Rated peak withstand current		kA/5	25, 31.5/4	
7	Rated short-circuit breaking current		kA	63, 80	
11	Rated short-circuit making current		kA	51, 31.5	
12	Rated operating sequence		/	63, 80	
13	Mechanical life	load switch/circuit breaker	Times	2000	
		disconnecting/earthing switch	Times	5000	
14	Loop resistance	1250A	μΩ	6120	
		2500A	μΩ	580	
15	Rated inflation pressure (gauge pressure at 20°C)		MPa	0.02	
	Annual relative gas leakage rate		year	≤0.01%	
16	Insulating gas			SF 6	
	Protection level	Isolation Room (IP)	/	IP2XC	
		Air box (IP)	/	IP67	
		Cabinet (IP)	/	IP41	
		Cabinet (IK)	/	IK10	
17	Arcing test (fault current/duration)		kA/5	31.5/1	

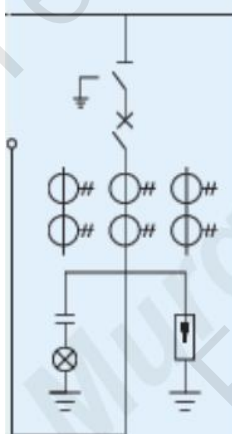


Typical solutions

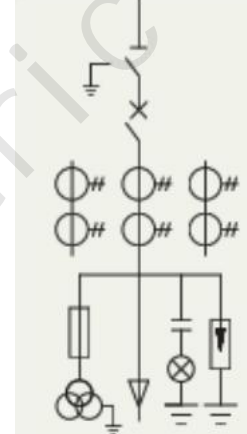
Cable inlet (outlet) cabinet:



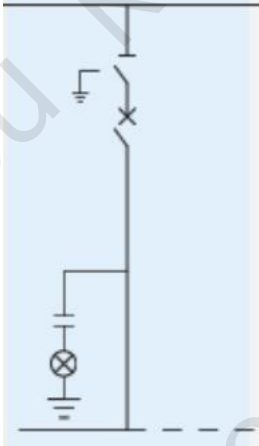
Overhead inlet cabinet



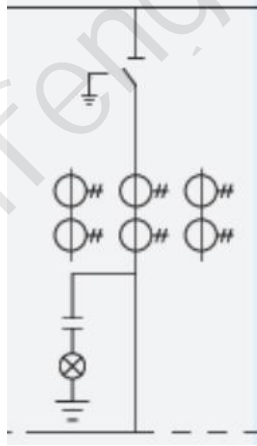
Inlet (with PT) cabinet



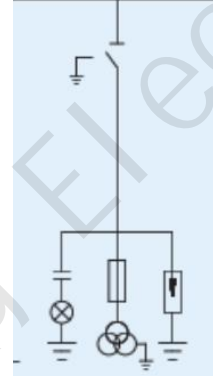
Sectional circuit breaker cabinet :



Sectional isolation cabinet



PT cabinet



Installation dimension

Rated current (A)	1250	2500	3150
Cabinet width (mm)	600	800	1000

Technical requirements

Cabinet width (mm)	600	800	1000
L1 Cabinet width (mm)	430	630	830

1. Switchgear can be bolted to the foundation steel channel or welded to the foundation channel steel;
2. The laying of the foundation channel steel should ensure flatness, and the unevenness per meter shall not exceed 1mm;
3. The foundation should be able to withstand the maximum static load of the switch cabinet of 2000kg and the maximum impact load of 3000kg



KXGN Series Air Insulated Rain Main Unit



Product Introduction:

KXGN series box-type fixed metal-enclosed switchgear is suitable for 3.6-33kV ring network cabinet power supply and dual-radiation power supply system. It can also be used for terminal power supply or installed in box-type substation for power control and protection. It can be used for the protection and control of electrical equipment in power plants, substations, industrial and mining enterprises, and can form a multi-scheme ring network power supply equipment with related load switches.

Production standards:

IEC 60265
IEC 62271-105
IEC 62271-102
IEC 60694
IEC 62271-1
IEC62271-103
IEC62271-200



Usage Environment:

1. Altitude: $\leq 4000\text{m}$. When the equipment is operated at an altitude of more than 1000m , please specify so that the inflation environment pressure can be adjusted during manufacturing.
2. Ambient temperature: $+55^{\circ}\text{C}$ --- -25°C ; the average temperature within 24 hours does not exceed 35°C
3. Ambient humidity: the average relative humidity in 24 hours does not exceed 95%; the average monthly relative humidity does not exceed 90%
4. Installation environment: there is no explosive and corrosive gas in the surrounding air, there is no severe vibration and shock at the installation site, and the pollution level does not exceed Class C in IEC/TS 60815-1
5. Earthquake intensity: 8 degrees

Structural characteristics:

1. The cabinet steel plate is made of high-quality hot-dip galvanized thin steel plate processed by CNC equipment, with high precision, good strength, corrosion resistance, light weight and good versatility.
2. It is equipped with FMG load switch or FRMG combination electrical appliance independently designed and developed by our company, with high reliability, small size, long service life and surface maintenance.
3. The interlocking device is practical and reliable, fully meeting the five-protection requirements.
4. It has a reliable grounding protection system, and a pressure relief channel is set at the rear of the cabinet to ensure personal safety.



Technical Parameters

Product Model:

KXGN-A B/C-D

K: Company code X: Box type G: Fixed type N:
Indoor

A: Rated voltage: 11/24/33kV

B: C load switch F combination device V circuit
breaker

C: Rated current

D: C is Rated short-time withstand current

F/V is: Rated short-circuit breaking current



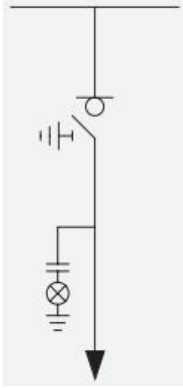
Technical Parameters

No.	Item		Unit	parameter			
1	Rated Voltage		kV	11	24	33	
3	Rated Frequency		Hz	50	50	50	
4	Rated Current		A	630	630	630	
5	Rated Insulation Level	1min power frequency withstand voltage	Phase to Phase,Phase to Earth	kV	28	50	70
			Open Contact	kV	32	60	80
	Lightning impulse withstand voltage	Phase to Phase,Phase to Earth	kV	75	125	175	
		Open Contact	kV	85	145	195	
6	Rated short-time withstand current		kA/s	25/3	20/3	16/1	
7	Rated peak withstand current		kA	62.5	50	40	
8	Maximum segment transfer current		A	1700	1400	630	
9	Rated short-circuit making current		kA	62.5	50	40	
10	Maximum rated current of fuse		A	200	200	63	
11	Rated closed-loop breaking current		A	630	630	630	
13	Mechanical life	Main switch	Times	M2(5000)	M2(5000)	M1(1000)	
		earthing switch	Times	M1(1000)	M1(1000)	M0(1000)	
14	Electrical life		/	Class E3	Class E3	Class E3	
17	Protection level	Isolation Room (IP)	/	IP4X	IP4X	IP4X	
18	Arcing test (fault current/duration)		kA/s	20kA/1s 25kA/1s	16kA/1s 20kA/1s	16kA/1s	

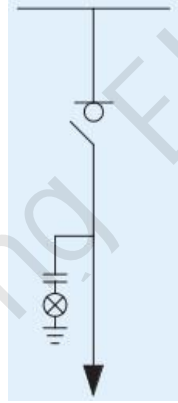


Main Typical Solutions

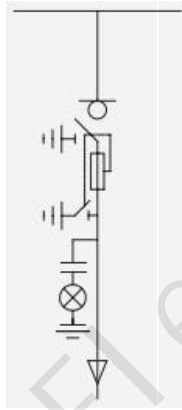
C Unit:



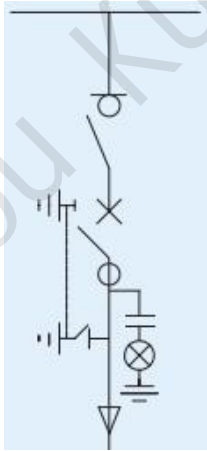
Gj Unit:



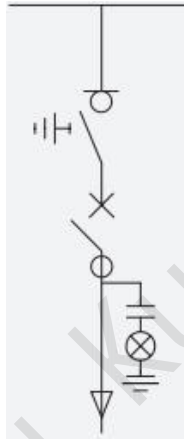
F Unit:



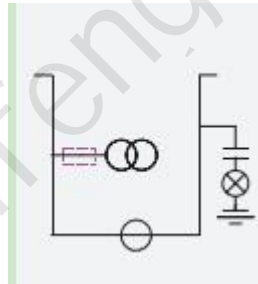
V Unit



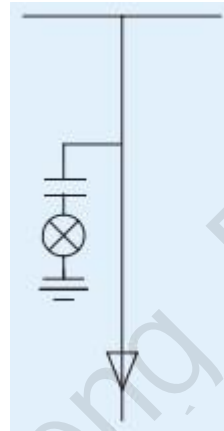
Vj Unit



M Unit:



D Unit:



Structural Overview:

Cabinet appearance



KXGN-11



KXGN-24



KXGN-33



KXGN-:

Cabinet appearance



1



2



3

Structural description

Three parts of the cabinet

1、 Monitoring and protection 2、 Switch 3、 Cabinet




KXGN- F

Switchgear structure

Introduction:

1. Switch gap: load switch, isolating switch or grounding switch is sealed in a gas chamber filled with SF6 gas, and the sealing pressure meets the standard requirements
2. Busbar isolation: each busbar is on the same horizontal plane, the cabinet can be expanded to both sides, and the connection between cabinets is simple
3. Operating mechanism interval: used to install operating mechanism, perform closing, opening or grounding operations, and indicate the corresponding operating position. Electric operating mechanism can also be installed
4. Control protection gap: This interval device has low-voltage fuses, relay protection devices, terminal blocks, etc. If the interval volume is not enough, an expanded low-voltage room can be added to the top of the cabinet
5. Wiring gap: front wiring, it is easy to connect with the switch and grounding terminal. In addition, when used for transformer protection, this interval can also carry a grounding switch on the lower side of the fuse



KXGN-  V

Switchgear structure

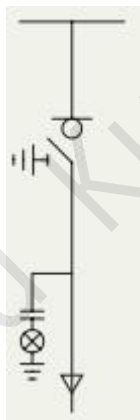
Introduction:

1. Switch gap: load switch, isolating switch or grounding switch is sealed in a gas chamber filled with SF6 gas, and the closed pressure meets the standard requirements
2. Busbar isolation: each busbar is on the same horizontal plane, the cabinet can be expanded to both sides, and the connection between cabinets is simple
3. Control protection gap: This interval device has low-voltage fuses, relay protection devices, terminal blocks, etc. If the interval volume is not enough, an expanded low-voltage room can be added to the top of the cabinet
4. Operating mechanism interval: used to install operating mechanisms, perform closing, opening or grounding operations, and indicate the corresponding operating positions. Electric operating mechanisms can also be installed
5. Wiring gap: front operation, easy to connect to switches and grounding terminals, if necessary, can be equipped with current transformers and voltage transformers, this interval can be equipped with special circuit breakers for KXGN cabinets produced by our company

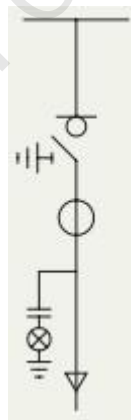


Width of inlet and outlet cabinet

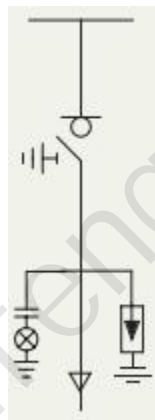
Voltage	1、 Incoming or outgoing(mm)	2、 (Incoming or outgoing line) with CT (mm)	3、 (Incoming or outgoing line)with lightning arrester (mm)	4、 Outlet cabinet (left or right)mm
11kV	375	500	375	375
24kV	375/500	375/500	375/500	375/500
33kV	750	1000	750	750



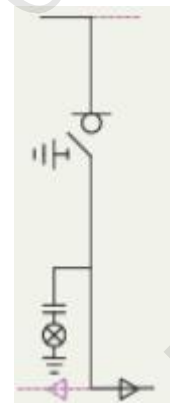
1



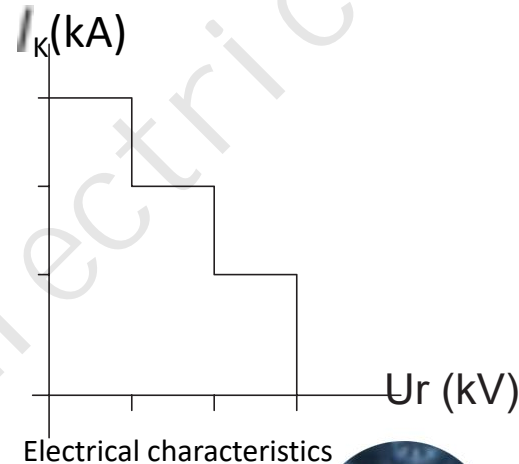
2



3



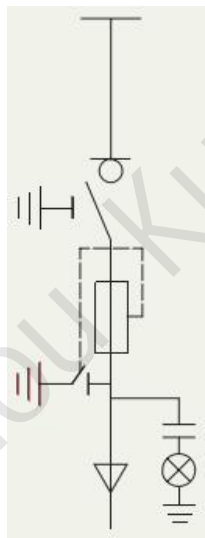
4



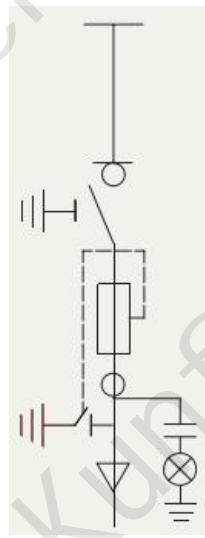
KXGN- F:

Protection cabinet unit width

Voltage(kV)	1 Fuse protection unit (mm)	2 Fuse protection unit (with CT) mm
11	375	500
24	375/500	650
33	750	1000



1



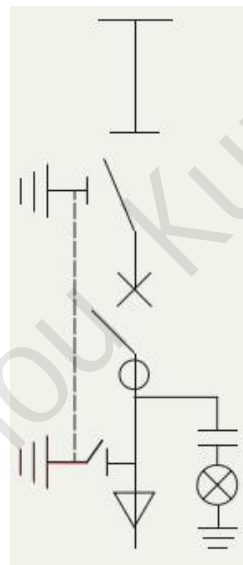
2



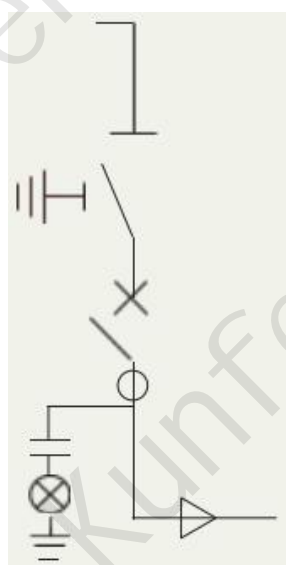
KXGN- V:

Protection cabinet unit width

Voltage(kV)	1 Circuit breaker unit disconnect switch (mm)	2 Circuit breaker unit isolation switch (right out)mm
11	750	750
24	750	750



1

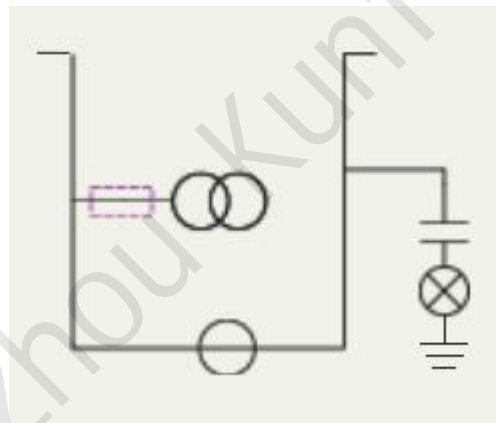


2

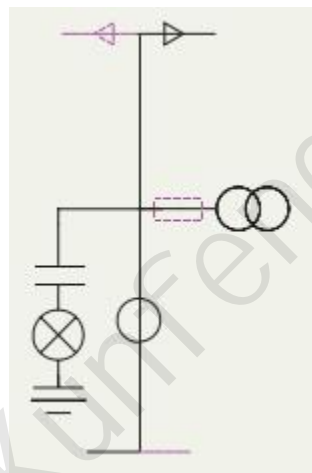


KXGN-M:
Protection cabinet unit width

Voltage(kV)	1 Voltage measuring cabinet (mm)	2 Current and voltage measuring cabinet (left or right outlet) mm
11	750	750
24	750	750
33	1000	1000



1



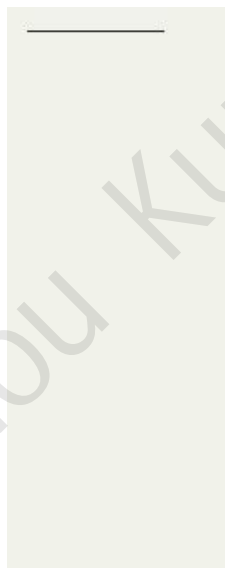
2



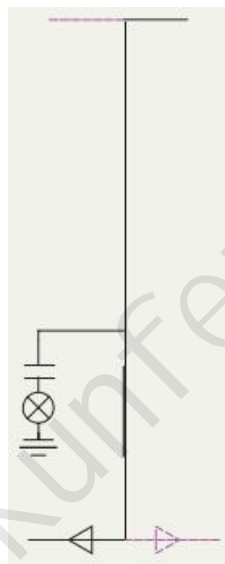
KXGN-D:

Protection cabinet unit width

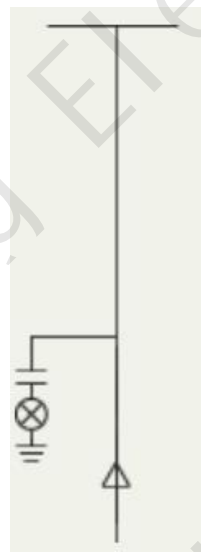
Voltage(kV)	1 Expansion Cabinet(mm)	2 Busbar lifting cabinet (left or right outlet) mm	3 Cable entry cabinet mm
11	125	375	375
24	375	375	375
33	375	750	750



1



2



3



FMG Series load switch:

The FMG series load switch is a three-position load switch dedicated to the KXGN series metal-enclosed switch cabinet. The switch is mainly a rotary moving contact structure, adopts magnetic arc extinguishing, has reliable performance, has good insulation performance, undertakes the main function, and has the performance of opening and closing rated current, load current and closing short-circuit current, etc.

VMG series side-mounted circuit breakers:

The VMG series side-mounted circuit breaker is a circuit breaker dedicated to the KXGN series metal-enclosed switchgear. The switch adopts a movable structure and adopts the mature vacuum arc extinguishing method of VS1. It has the advantages of reliable breaking performance, long service life, maintenance-free and easy installation.

This series of side-mounted circuit breakers is mainly used in the KXGN series metal-enclosed switchgear. As the main component, it bears the main function and has the performance of splitting and closing rated current, load current and closing and breaking short-circuit current.

KGJ series earthing switch:

It has a 2-time 5.1kA closing function and is equipped with a special fuse release component, which can perfectly realize the combined electrical protection function



Core units and components

Operating mechanism:

According to the long-term operation system analysis, the power department found that among the various causes of failure of medium and high voltage switchgear, in different regions, different switch types, and different voltage levels, the failure caused by the operating mechanism accounts for 30%-70%. Therefore, the reliability of the operating mechanism has become an important indicator of the technical level of sf6 ring network switchgear.

The KXGN series switchgear adopts the spring operating mechanism proven by decades of operation experience in the switch industry, with stable performance and the following characteristics:

1. Independently developed and stable spring operating mechanism;
2. Adopting a splint structure, good stability, high reliability and long life;
3. Compact structure and high output transmission efficiency;
4. High corrosion resistance, all parts of the operating mechanism have undergone a 96h salt spray test to ensure the reliability of the product under harsh conditions
5. Complete rigid interlocking device, safe and reliable, to prevent misoperation to the maximum extent;
6. Stable transmission output, matching the parameters of the mainstream sf6 switch in the market

Product series	C Manual	C Electrical	F manual	F Electrical
FMG-IS	√	√		
FMG-QS			√	√



C operating mechanism:

1. Use the operating handle or motor to open and close the main switch
2. Use the operating handle to open and close the grounding switch
3. Electric auxiliary contacts
Switch (2O+2C) and grounding switch (1O+1C)
Manual auxiliary contacts
Switch (1O+1C) and grounding switch (1O+1C)



F operating mechanism:

1. Use the operating handle to store energy and then close the main switch through the closing button or use the motor to close the switch
2. The opening button, fuse bounce system or shunt trip coil can trigger the trip system and quickly open the switch
3. Use the operating handle to open/close the grounding switch
4. Electric auxiliary contacts
Switch (3O+3C) and grounding switch (1O+1C) Fuse (1C)
5. Mechanical indication Fuse blown
6. Trip: shunt trip



Working principle of SF6 switch cabinet

1 SF6 gas:

SF6 gas easily absorbs free electrons and has strong electronegativity, so it has strong insulation and arc extinguishing performance. FMG switch uses SF6 gas as insulation and arc extinguishing medium, which has good insulation performance.

2.FMG Switch:

Contact maintenance-free

Long service life

Very low operating overvoltage

Safe operation

3 Sealing performance:

The three-phase rotating contacts of the switch are installed in a gas chamber filled with SF6 gas with a relative pressure of 0.4 bar. The gas chamber meets the requirements of IEC "sealed pressure system", and the annual leakage rate is less than 0.05%. The sealing performance is strictly tested before leaving the factory.

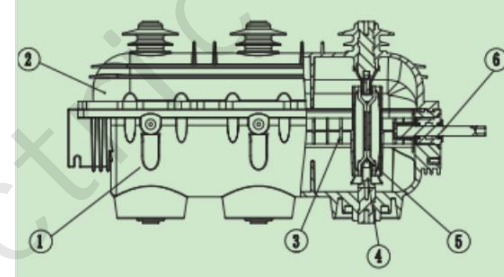
4 Safe to use

Three-position switch, natural interlock, to prevent human error

The switch has both breaking and isolating functions

The grounding switch has short-circuit closing capability

In the event of an accident, the overpressure SF6 gas breaks through the safety diaphragm and the pressure drops, and the gas sprays directly to the rear of the cabinet to ensure the safety of personnel in front of the cabinet



1 Housing

2 Sealing cover

3 Operating shaft

4 Stationary contact

5 Moving contact

6 Rotating seal



Core units and components:

Transformer and line protection

The MXGN series switchgear provides two transformer protection methods: load switch + fuse combination electrical appliances and circuit breakers with relay protection.

Load switch + fuse combination electrical appliances are particularly suitable for the protection of small and medium-sized transformers. Fuses are more sensitive to smaller overcurrent protection. For larger transformers and line protection, circuit breaker protection is generally used.

Protection of load switch + fuse combination electrical appliances:

When selecting combination electrical appliance protection, the MXGN series switchgear uses XRNT series fuse protection, which complies with the IEC282-1 standard. When selecting fuses, the rated current of the fuses needs to match the transformer capacity. The fuse model can be selected according to the following table.



Fuse-transformer capacity selection comparison table (—)

Transformer rated capacity (KV A):

100%	Transformer rated capacity (kVA)														Fuse
UN(kV)	25	50	75	100	125	200	250	315	400	500	630	800	1000	1250	
3	16	25	25	40	40	50	80	100	125	160	160				7.2kV
3.3	16	25	25	40	40	50	63	80	100	125	160				
4.15	10	16	25	25	40	50	50	63	80	100	125	160			
5	10	16	25	25	25	40	50	50	63	80	100	160	160		
5.5	6	16	16	25	25	40	50	50	63	80	100	125	160		
6	6	16	16	25	25	40	40	50	50	80	100	125	160	160	
6.6	6	16	16	25	25	40	40	50	50	63	80	100	125	160	12kV
10	6	10	10	16	16	25	25	40	40	50	50	80	80	125	
11	6	6	10	16	16	25	25	25	40	50	50	63	80	100	
12	6	6	10	16	16	25	25	25	40	40	50	63	80	100	17.5kV
13.8	6	6	10	10	16	25	25	25	25	40	50	50	63	80	
15	6	6	10	10	16	16	25	25	25	40	40	50	63	80	
17.5	6	6	6	10	10	16	16	25	25	25	40	50	50	63	24kV
20	6	6	6	10	10	16	16	25	25	25	40	40	50	63	
22	6	6	6	6	10	16	16	16	25	25	25	40	50	50	
24	6	6	6	6	10	16	16	16	25	25	25	40	40	50	



Fuse-transformer capacity selection comparison table (二)

Mechanic Data:

125%	Transformer rated capacity (kVA)														Fuse
UN(kV)	25	50	75	100	125	200	250	315	400	500	630	800	1000	1250	
3	16	25	25	40	40	50	80	100	125	160	160				7.2kV
3.3	16	25	25	40	40	50	63	80	100	125	160				
4.15	10	16	25	25	40	50	50	63	80	100	125	160			
5	10	16	25	25	25	40	50	50	63	80	100	160	160		
5.5	6	16	16	25	25	40	50	50	63	80	100	125	160		
6	6	16	16	25	25	40	40	50	50	80	100	125	160		
6.6	6	16	16	25	25	40	40	50	50	63	80	100	125		
10	6	10	10	16	16	25	25	40	40	50	50	80	80	125	12kV
11	6	6	10	16	16	25	25	25	40	50	50	63	80	100	
12	6	6	10	16	16	25	25	25	40	40	50	63	80	100	
13.8	6	6	10	10	16	25	25	25	25	40	50	50	63	80	17.5kV
15	6	6	10	10	16	16	25	25	25	40	40	50	63	80	
17.5	6	6	6	10	10	16	16	25	25	25	40	50	50	63	
20	6	6	6	10	10	16	16	25	25	25	40	40	50	63	24kV
22	6	6	6	10	10	16	16	16	25	25	25	40	50	50	
24	6	6	6	6	10	16	16	16	25	25	25	40	40	50	

Note: Table 1 fuses are under normal operating conditions without load; Table 2 fuses are under normal operating conditions and 20% overload conditions



KGW series outdoor high voltage ring network box



Product Introduction:

With the development of modern industry, the requirements for automation and intelligence of electrical control equipment are getting higher and higher. It has become an inevitable trend and development direction to integrate the monitoring, protection, control, and metering modules of power equipment under normal and accident conditions by using modern electronic technology, sensor technology, communication technology, and computer network technology to achieve good unified management purposes.

In recent years, my country's urban power grid has undergone earth-shaking changes. Most cities have formed or are forming numerous power load-intensive areas. Therefore, the new power supply method, that is, through the ring network box/switch, has no need for civil construction, small footprint, flexible configuration, reliable power supply, short construction, installation and commissioning time, and low overall cost. It has been vigorously developed.

The KGW-11 outdoor high-voltage ring network box is a complete set of electrical appliances that represents the domestic advanced technology level. It is developed by summarizing the experience of branch boxes with switches that have been operating safely and reliably and combining the technology of distribution network automation systems. The KGW-11 outdoor high-voltage ring network box installs and debugs 11kV switch cabinets, power PT cabinets, feeder FTU, RTU, communication control terminals, metering and automatic meter reading, UPS power supply, etc. into a movable, sealed, moisture-proof stainless steel or non-metallic box, shortening the construction period and realizing the integration of primary and secondary systems in urban distribution networks and modular assembly.



Product Model:

KGW A-11/630-25

KGW:Outdoor high voltage ring box

A:Design No.

11:Rated Voltage

630:Rated Current

25: Rated Short-time Withstand Current



Technical Standards:

This product meets the IEC standard. After reaching an agreement with the user, it can use a higher standard

IEC 62271-1

IEC 62271-103

IEC 62271-200

IEC 62271-105

IEC 62271-200

IEC 62271-1

IEC 62271-100

IEC 62271-102

IEC 60815-1

IEC 60529

IEC 60071-1



Operating environment:

1. Altitude: $\leq 4000\text{m}$ (please specify when the equipment is operating at an altitude of more than 1000m so that the manufacturer can adjust the inflation pressure)
2. Ambient temperature: maximum temperature 55°C , minimum temperature minus 25°C ; 24-hour average temperature does not exceed 35°C
3. Ambient humidity: 24H average relative humidity does not exceed 95%; monthly average relative humidity does not exceed 90%
4. Installation environment: There is no explosive and corrosive gas in the surrounding air equipment, no severe vibration and impact at the installation site, and the pollution level does not exceed Class C in IEC/TS 60815-1
5. Earthquake intensity: 8 degrees



Structural features:

The outdoor ring network cabinet is composed of a fully insulated and fully sealed KGC series inflatable cabinet and an outdoor box. The outdoor box has strong corrosion resistance, no fasteners on the surface for disassembly, good anti-theft performance, IP43 protection level, and strong rainproof performance.

The top cover is designed as an air sandwich double-layer structure. The outer layer has a drainage angle and is equipped with a vent. The air inlet is located at the bottom and side of the box, and a removable dust filter is provided. The box forms air convection from bottom to top, so that the box has good heat insulation and ventilation effects.

The box has a sealed floor for the cable inlet to prevent moisture from entering the cable trench. The door and the box are sealed with sealing strips at the contact point. After opening, there is a windproof device to facilitate the door fixation during operation. The door lock has a rainproof structure design.

The switchgear in the box has been installed and inspected before leaving the factory. When transported to the site, the box needs to be hoisted to the required position. The installation is simple and the floor space is small.

Outdoor box materials are designed according to Kean requirements. Common ones are:

1. Stainless steel shell-----made of stainless steel, conventional spray color, optional color
2. Landscape shell-----made of stainless steel, landscape wood strips are embedded around the box, and the spray color is optional.
3. GRC shell-----non-metallic shell, cast in cement mortar made of special cement and glass fiber and other materials



KGW series outdoor high voltage ring network box



KGC Series Switchgear

1. Through the control of the mechanism and electrical interlocking device, the operation fully achieves the following five interlocking functions

Preventing the circuit breaker/load switch from opening or closing by mistake

Preventing the disconnecter from opening or closing with load

Preventing the earthing switch from closing with power on

Preventing the circuit breaker/load switch/disconnector from closing with grounding on

Preventing entering the live compartment by mistake

2. The primary live part (main busbar) and the switch body of the KGC series switchgear are sealed in a gas box welded from stainless steel plates. The main circuit is connected to the outside through the bushing installed on the gas box that meets the DIN47636 standard. It can be connected to the incoming and outgoing cables through a fully insulated, fully shielded detachable connector. The gas box protection level reaches IP67. The inside of the gas box is not affected by the external environment and has short-term flood and condensation resistance.



3. The KGC series switchgear can be combined into a common box type non-expandable fixed ring network switchgear through various standard unit modules (in the same sf6 gas box, up to 6 units can be shared), and different modules can also be combined into expandable units. Through dedicated fully insulated shielded busbar connectors, multiple forms of combination can be achieved to achieve full modularization, which can meet the needs of different regions, different forms, and different customers to the greatest extent, and provide a variety of power supply and distribution design solutions.

Ordering Instructions

The following information should be provided when ordering

- 1、 Product model name and order quantity, rated voltage, rated current
- 2、 Operating mechanism model, indicate the operating voltage when electric operation is selected
- 3、 Fuse models and specifications that can be selected in combination electrical appliances
- 4、 Name and quantity of spare parts
- 5、 Please contact our company for other special requirements

