



广东库博精密科技集团股份有限公司

GUANGDONG UNIHOPPER PRECISION TECHNOLOGY GROUP CO.,LTD

运营中心：广州市天河区天河路 242 号丰兴广场 B 栋 2404 室
Operating center: Rm2404 Building B, Fengxing Plaza, No.242, Tianhe Rd, Tianhe District, Guangzhou City

总部：肇庆高新技术产业开发区创业路 9 号库博工业园
Headquarter: Unihopper industrial park, No.9 Chuangye road, High-tech Industrial Development Zone ,Zhaoqing City, Guangdong Province, China

TEL: 0758-3212900/3212901
FAX: 0758-3212902
E-mail: sales@unihopper.biz

 www.unihopper.biz

2410



公众号



微官网

库博五金保留在不影响功能质量前提下，适当改动尺寸、外型而不另行通知。实际产品会因印刷原因与样本上有少许色差，产品图片尺寸误差以实物为准
On the premise of not influence the function and uality,Grasshopper reserves the right of changing the size,outlook without notice.
There will be a little color difference between the product in presswork and definite object.The correct size of the product subject to definite object.



CUSTOM FURNITURE LIGHTING SYSTEM

Designed by UNIHOPPER

CUSTOM FURNITURE LIGHTING SYSTEM 定制家居照明产品手册



CUSTOM FURNITURE LIGHTING SYSTEM

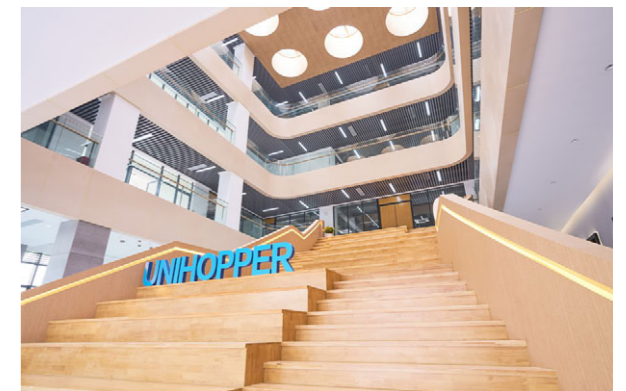
更懂高端家居的五金品牌

MORE UNDERSTANDING OF HIGH-END HOME HARDWARE BRANDS

库博定制家居照明产品手册



Unihopper Intelligent industrial park
库博智能化工业园



Unihopper R & D Building
库博研发大楼

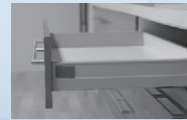
MILESTONES

品牌里程碑

2003

Unihopper founded the company in Guangzhou, and launch the first generation one-way soft closing drawer box.

库博在中国广州成立销售公司
推出第一代单缓冲骑马抽



2007

Unihopper founded a union design group with designers from Europe and Columbia, and successfully launch the second generation two-way soft closing drawer box. The concept of twoway soft closing became popular around world ever since.

与欧洲、哥伦比亚设计师成立联合设计小组
推出第二代双缓冲骑马抽
双缓冲理念在此风靡全球



2005

Unihopper decided to invest with the advanced technology from Europe and construct the production base in FOSHAN of China.

投建佛山生产基地
引进欧洲先进技术在中国进行生产



2008

Unihopper set up the marketing center and began to provide quality products and service for Chinese furniture customers.

组建营销中心
为中国家具客户
提供优质的产品和服务

2010

Unihopper successfully researched and developed the third generation interactive two-way soft closing drawer box and synchronize conceal slide.

研发第三代联动双缓冲骑马抽
同步隐藏导轨

2013

The union design group successfully researched and developed basket and wardrobe storage system (MOKA).

研发拉篮
衣柜收纳系统(摩卡系列)



2015

Unihopper successfully researched and developed the fifth generation interactive two-way soft closing drawer box-Magic box, and successfully hosted the "Night of Unihopper" in Beijing wardrobe annual conference.

第五代联动双缓冲骑马抽-魔力抽
北京衣柜年会举办“库博之夜”



2016

Unihopper successfully hosted "Unihopper summit conference" in Guangzhou, and announced Unihopper would globalize the brand.

在广州举办库博峰会
UNIHOOPER 库博全球化

2017

Unihopper successfully hosted the second "Unihopper summit conference". Same time, Unihopper Business College was founded.

第二届全球峰会
库博商学院成立

2019

Unihopper successfully hosted the third "Unihopper summit conference", and founded the new Unihopper production base and Unihopper brandday. Same year, Unihopper researched and developed the Phantom kitchen storage system and Co-box.

第三届全球峰会
新生产基地奠基
库博“9月9日品牌日”成立
研发魅影系列厨房收纳、酷力抽系列



2020

Unihopper become one of the home decoration drafting committee for Hinge, slide and basket. In the same year, Unihopper won the National High-tech Enterprise. Vanka, COKA have been introduced to the market.

成为全装修家居五金铰链、导轨、拉篮
使用标准主起草单位
荣获国家高新技术企业
梵卡、酷卡系列推向市场



2021

Unihopper new production base put into use officially. LINA, HUGGEN have been introduced to the market.

新产业园正式投入使用丽影、库格系列新品推出



2022

Unihopper international R&D center and the flagship showroom in the new headquarters fully open to the public, same time, Unihopper establish product R&D centre and product laboratory together with Vanke caizhu.

库博国际研发中心与
新总部旗舰产品体验厅开放
与万科采筑共建产品研发中心、
产品国家实验室

2023

We held the first "Unihopper Cup" National Terminal Designers Competition, initiating the first action in the Industry by making a solid sound for the professional home designers who stand as a group of product end-user

库博举办首届“库博杯”全国终端设计师大赛,开创行业新举,为家居业终端设计师发声。

BRIEF INTRODUCTION

集团介绍

Unihopper, a high-end customized home brand and the provider for comprehensive solutions of hardware supporting, implements the "Belt and Road" global development strategy to develop the global market. Offering the Uni-products, Uni-design, and Uni-service to every corner of the world.

After years of development, Unihopper has sole agents in dozens of countries and regions around the world, such as Netherlands, Canada, Russia, Slovenia, Argentina, Korea, Iran, Spain, Portugal, Ireland, Saudi Arabia, Colombia, South Africa, India, Southeast Asia Regions and China HongKong, Macao and Taiwan regions and so on; and now, Unihopper has become a major suppliers for many well-known cabinet and home brands in the world. In China, many listed furniture enterprises are our Uni-partners including OPPEIN, PIANO, SOGAL, ZBOM, Haier, OLO and so on. At the same time, Unihopper is also the major suppliers of Vanke, LONGFOR, POLY, China Overseas and many other real estate companies in China.

In 2005, Unihopper set up a production base and established a large storage center in Nanhai city in China, and a new intelligent Uni-industrial park of more than 120,000 square meters will also be put into use in 2021. As one of the best name and provider for the high-end customized furniture hardware industry, Unihopper has always upheld the brand values of "European quality, Chinese price", and now, has become a leading brand popularizing in many home furnishing companies and consumers all over the world. In the future, Unihopper will increase more investment in space enlarging, strengthen multi-dimensional development including product application, intelligent scene introduction, online and offline channel integration, striving to become the best home storage master around consumers' life.

Unihopper 库博是一家致力于全球化发展的定制家居五金及五金配套解决方案的供应商。库博实行“一带一路”全球发展战略，开放的胸怀开拓全球市场。将库博的产品、文化、理念推广到世界每个角落。

经过多年的发展，UNIHOOPER 库博在荷兰、加拿大、俄罗斯、斯洛文尼亚、阿根廷、韩国、伊朗、西班牙、葡萄牙、爱尔兰、沙特、哥伦比亚、南非、印度、东南亚地区以及中国港澳台地区等全球数十个国家和地区设有独家代理，现已成为全球众多知名橱柜和家居品牌的主要供应商。在华许多上市家居企业均是库博合作伙伴，包括有：欧派、索菲亚、志邦、海尔、我乐等，同时库博品牌也是万科、龙湖、保利、中海等众多地产公司的主要供应商。

2005年，Unihopper 库博在中国佛山南海设立了生产基地并建立了大型仓储中心。全新超 12 万平方米智能化库博工业园已在 2021 年投入使用。作为一家高端定制家居五金供应商，Unihopper 库博一直坚持原创设计，“价格不上，品牌不下”的营销理念，已然成为全球众多家居企业和消费者追随的行业领导品牌，未来库博集团将加大更多空间投入，将产品运用、智能化场景导入、线上线下通道一体化等多维度发展，努力打造成为消费者身边最出色的家居收纳大师。



德国GS质量检测认证
GS Quality Test
Certification



英国皇冠ISO9001
质量管理认证
ISO 9001 Quality
Management Certification



国家高新技术企业
National High-
Tech Enterprise



家居五金铰链、抽屉导轨、拉盖
地严精英集团标准主起草单位
Standards Maker of Kitchen
Hardware Industry



共建研发中心
共建产品实验室 (CNAS)
R&D center and product
laboratory

THE LAYOUT OF UNIHOPPER ALL OVER THE WORLD

全球布局



COMPANY VISION

库博的理念

企业使命
CORPORATE MISSION:

满足人们对美好生活的向往是库博人的使命追求
To meet people's yearning for a better life is the mission pursuit of Unihopper

价值观
VALUES:

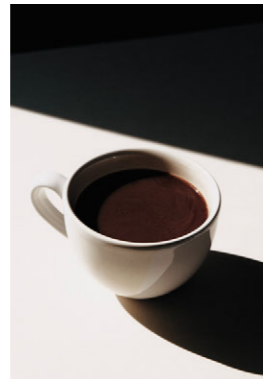
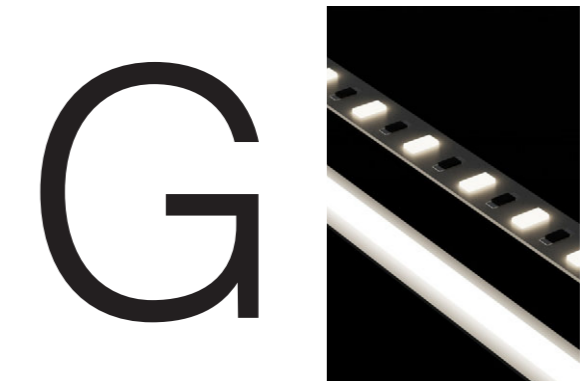
诚信、利他、奋斗、创新、理解、共进
Integrity, altruism, struggle, innovation, understanding, common progress



CUSTOM FURNITURE LIGHTING SYSTEM

定制家居照明系统





CUSTOM FURNITURE LIGHTING

SYSTEM

SPACE APPLICATION LIGHTING SYSTEM

空间应用照明灯光系统

Light and shadow manipulate the spatial hierarchy between light and dark. Unihopper custom home lighting system in bathroom, balcony, kitchen, bedroom, living room, office spaces,sculpts the beauty of optical craft.

光影，在明暗之间操纵空间层次。库博定制家居照明灯光系统，于卫浴阳台、厨房、卧室、客厅、办公等空间，雕琢光学工艺之美。







In line with the concept of minimalist design, the light is hidden in the lines, with a sense of fashion and space, creating a perfect atmosphere to the point.

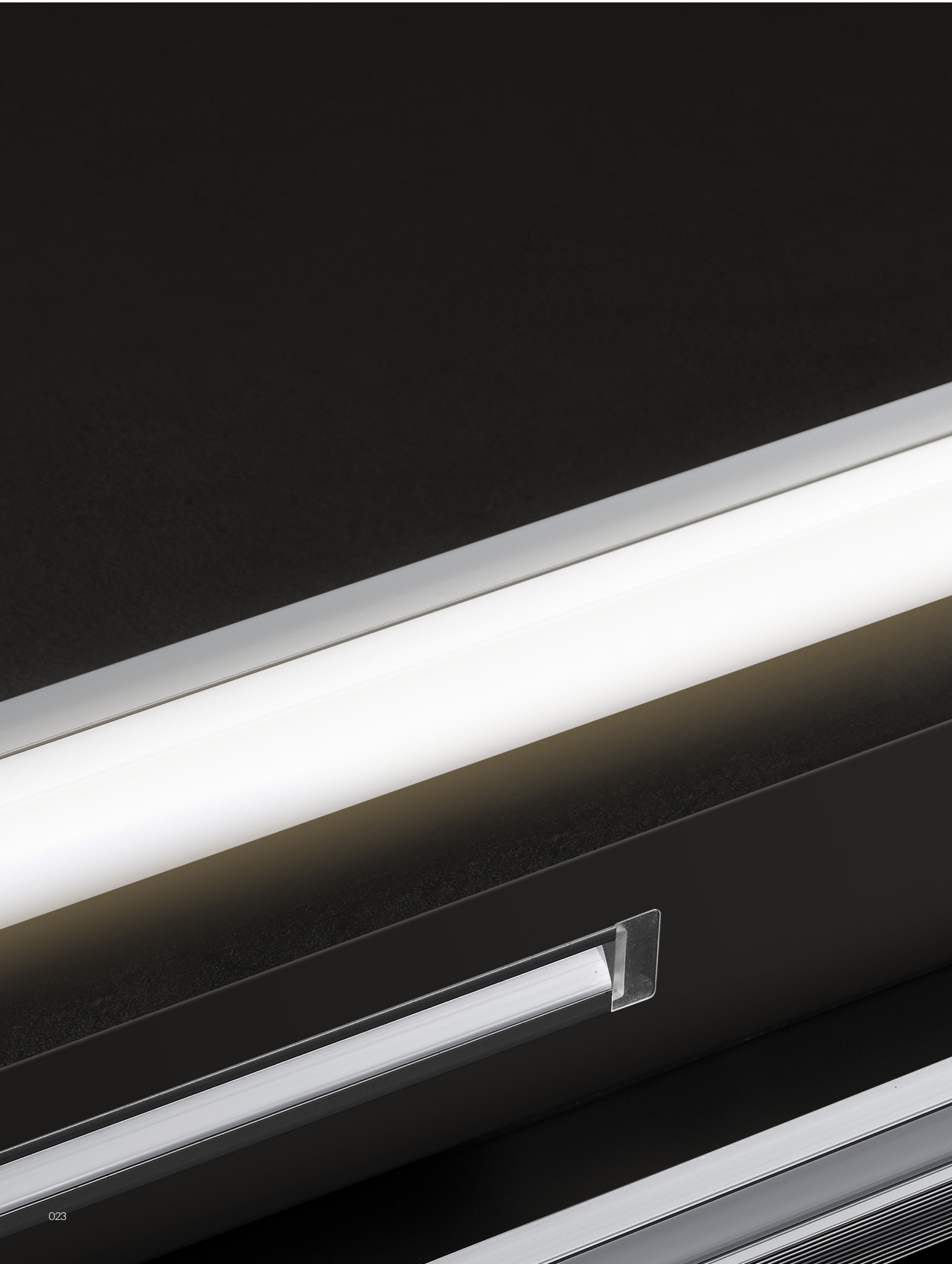
渗透极简设计的理念，将灯光隐藏在线条中，兼具时尚感与空间感，把空间氛围营造得恰到好处。





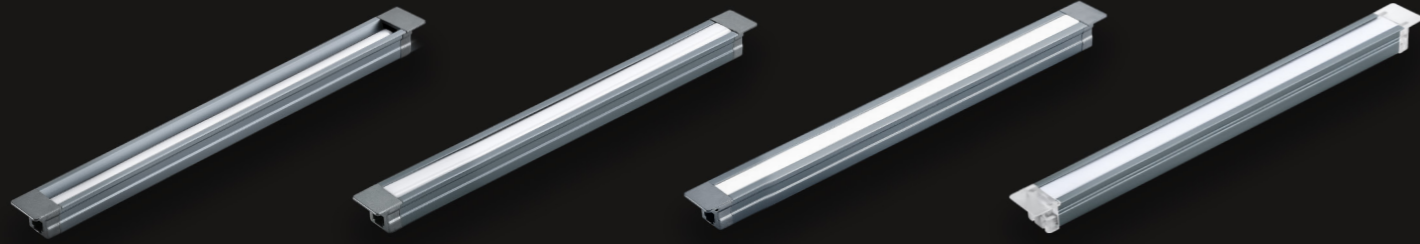
Summarized in space, but not restricted by space. The beauty is vividly restored in static form.
归纳于空间，却不受制空间，以静态形式将美生动还原。





Two kinds of LED strip design, both stable and durable traditional technology, but also in line with the new trend of innovative technology.

两种灯带设计，既有稳定耐用的传统技术，也有符合新潮流的创新技术。



免焊嵌入式扇形发光灯条
LT3114.NA.3M.NWGR
P. 027

免焊嵌入式平面发光灯条
LT3115.NA.3M.NWGR
P. 029

免焊嵌入式平面发光灯条 - 按压面罩
LT3116.NA.3M.NWGR
P. 031

免焊嵌入式灯条
LT3117.NA.3M.NWGR
P. 033

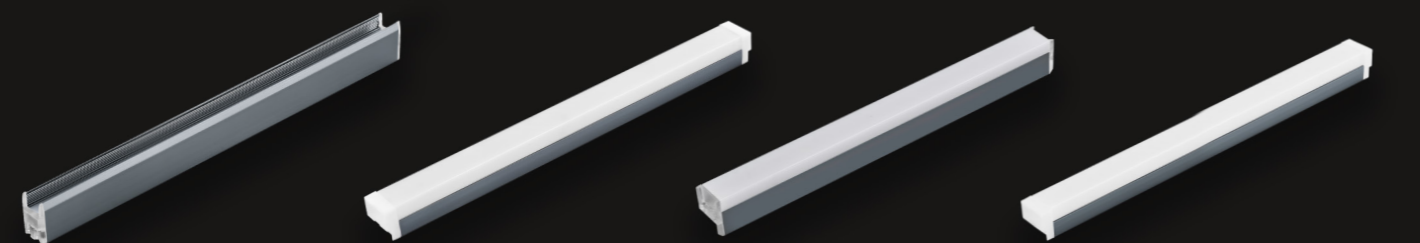


免焊嵌入式灯条 - 按压面罩
LT3118.NA.3M.NWGR
P. 035

免焊嵌入式45度发光灯条 - 穿插面罩
LT3119.NA.3M.NWGR
P. 037

免焊嵌入式45度发光灯条
LT3120.NA.3M.NWGR
P. 039

免焊后置卡玻璃层板灯条
LT2107.NA.3M.NWGR
P. 041

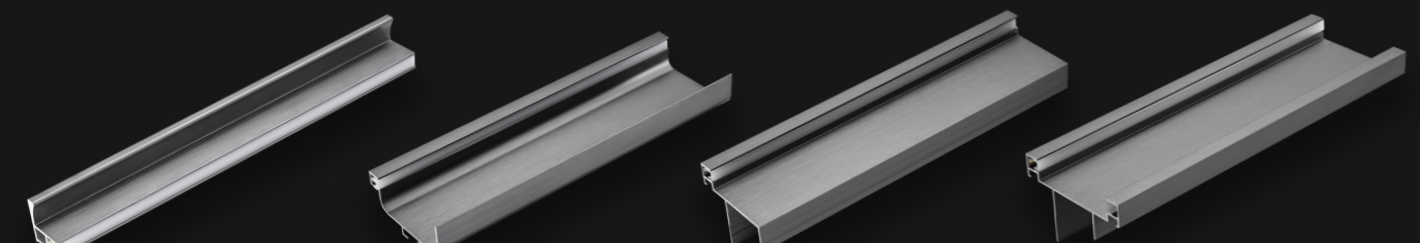


免焊卡玻璃层板灯条
LT2109.NA.3M.NWGR
P. 043

免焊18MM后置层板灯条
LT2108.NA.3M.NWGR
P. 045

免焊16MM后置层板灯条
LT2110.NA.3M.NWGR
P. 047

超薄免焊18MM后置层板灯条
LT2111.NA.3M.NWGR
P. 049

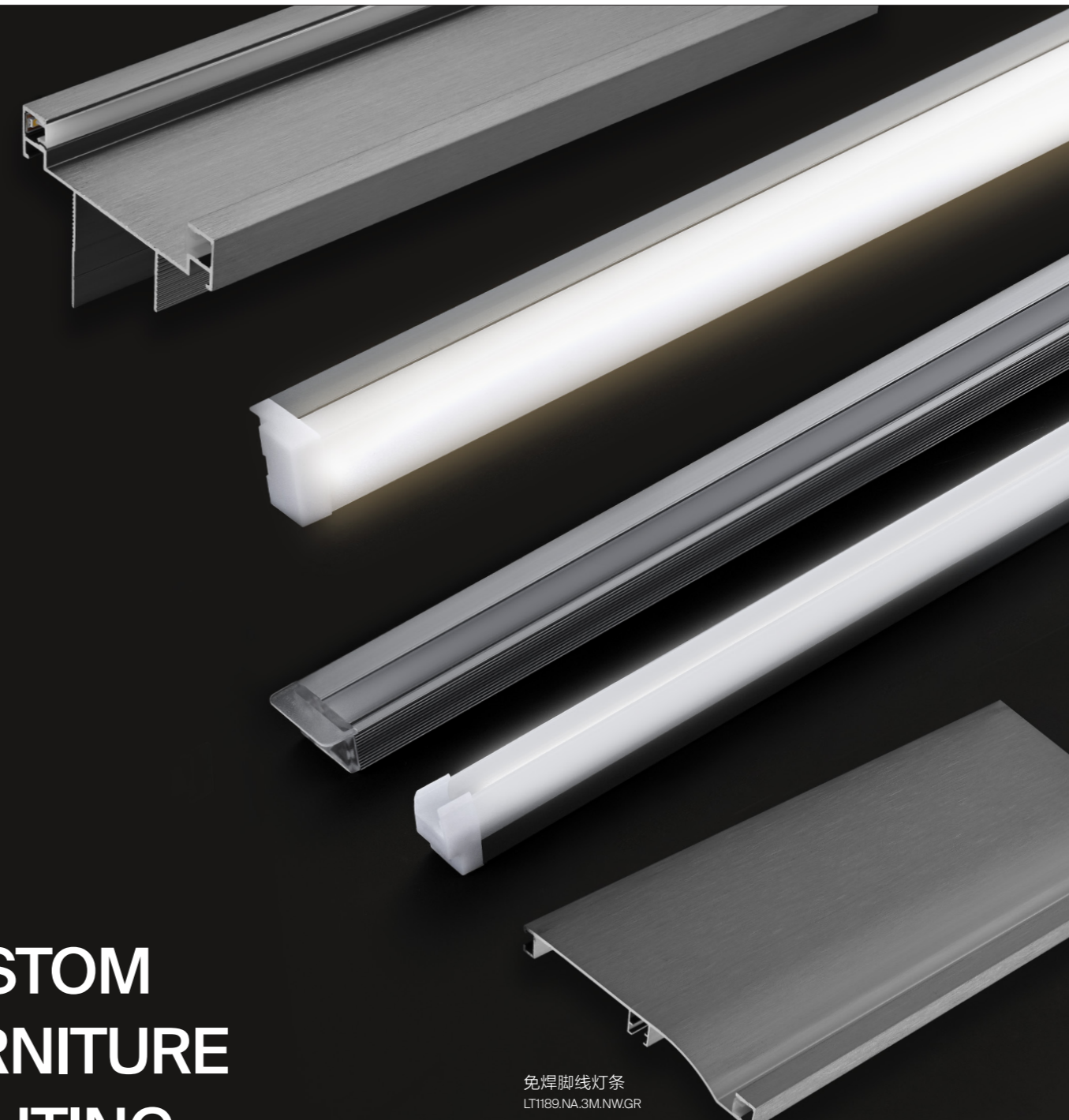


免焊吊柜免拉手灯条
LT2112.NA.3M.NWGR
P. 051

免焊地柜免拉手灯条
LT1186.NA.3M.NWGR
P. 053

免焊高柜单门免拉手灯条
LT1187.NA.3M.NWGR
P. 055

免焊高柜双门免拉手灯条
LT1188.NA.3M.NWGR
P. 057



免焊脚线灯条
LT1189.NA.3M.NWGR
P. 059

集控开关
E24
P. 065

恒压电源
E26
P. 066

CUSTOM FURNITURE LIGHTING SYSTEM

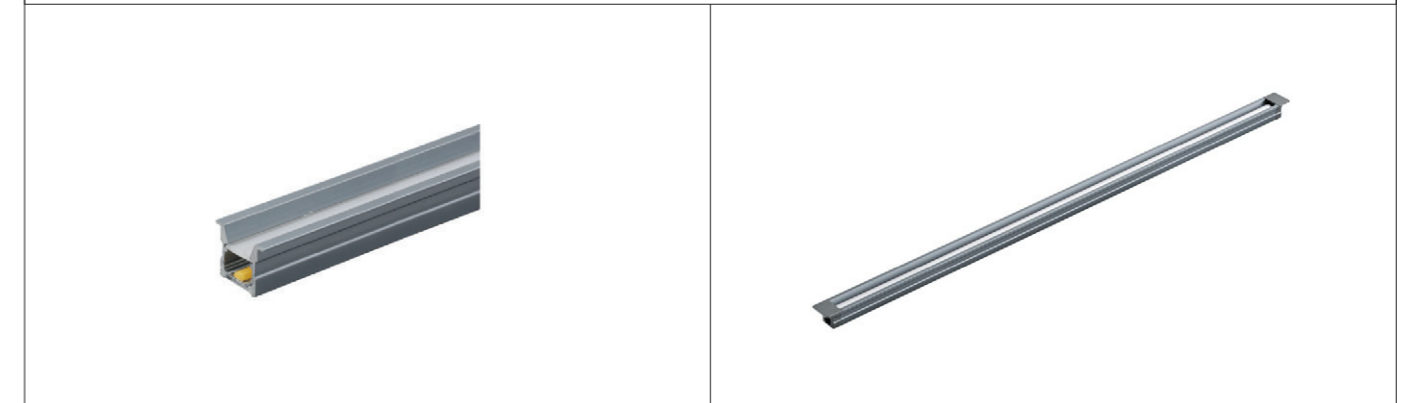
定制家居照明系统



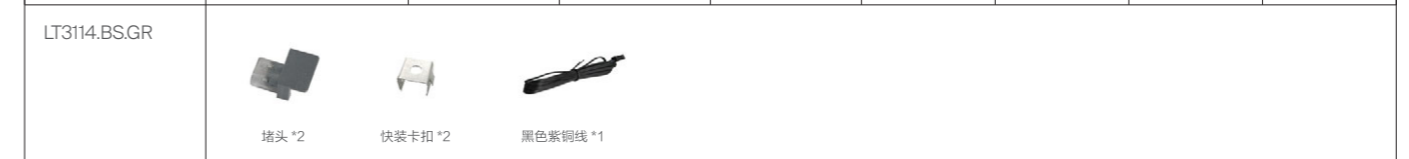
→ FEATURES / 产品特点

- Spraying treatment on surface of light body, high transmission of acrylic lampshade up to 95%
灯体表面喷涂工艺, 采用亚克力灯罩透光均匀, 亚克力透光率高达 95%
- 3mm extremely narrow light surface, more exquisite light
3mm 极窄发光面, 发光更精致
- Plug-and-pull design, lamp can be separated from the line
插拔设计, 可灯线分离
- Insert design, almost flush mounted in pre-slotting. The acrylic lampshade is lower than the lamp body, providing a soft lamplight without be dazzling
嵌入式设计, 几乎齐平安装于预开槽里。亚克力灯罩低于灯体, 可实现见光不见灯
- Color: Grey
颜色: 绅士灰

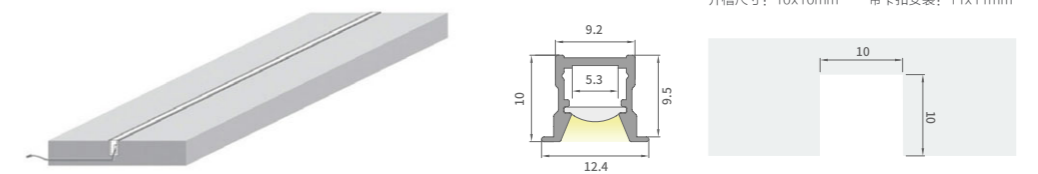
→ TECHNICAL DETAILS / 技术参数



MODEL 型号	LENGTH x WIDTH x HEIGHT(mm) 长 x 宽 x 高 (mm)	POWER 功率 (W)	CCT 色温 (K)	LIGHT SOURCE 光源	VOLTAGE 电压 (V)	COLOR RENDERING INDEX 显指 (CRI)	SWITCH 开关	DRIVE 驱动
LT3114.NA.3M.NW.GR	3000x12.4x10	28.5	<ul style="list-style-type: none"> ■ WW:3000K ■ NW:4000K ■ CW:6000K 	COB 320珠/米	12	> 90	外接开关	恒压驱动



→ INSTALLATION INSTRUCTION / 安装说明



* 灯体长度可裁切, 可按需求定制尺寸



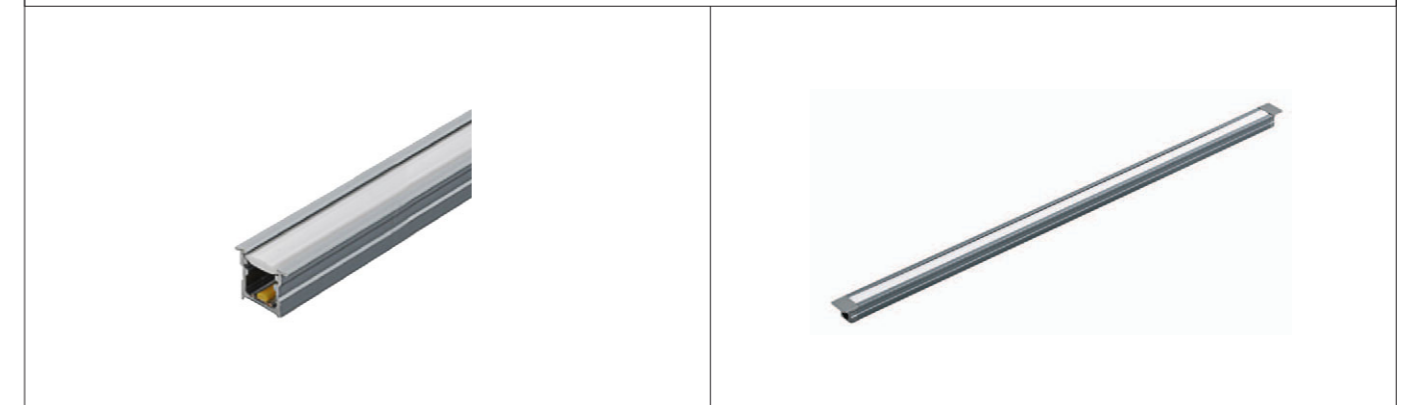
免焊嵌入式平面发光灯条



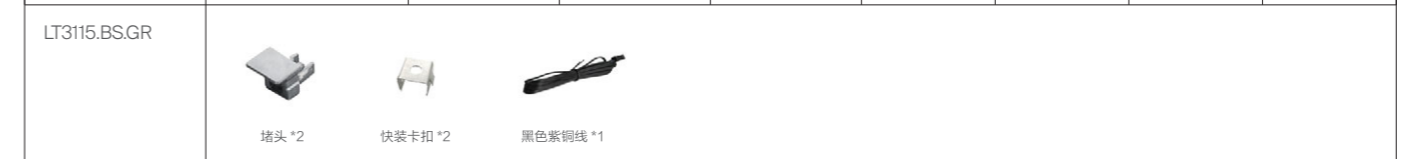
→ FEATURES / 产品特点

- Spraying treatment on surface of light body, high transmission of acrylic lampshade up to 95%
灯体表面喷涂工艺, 采用亚克力灯罩透光均匀, 亚克力透光率高达 95%
- Plug-and-pull design, lamp can be separated from the line
插拔设计, 可灯线分离
- Color: Grey
颜色: 绅士灰
- Insert design, almost flush mounted in pre-slotting. The acrylic lampshade is lower than the lamp body, allowing a larger irradiation area.
嵌入式设计, 几乎齐平安装于预开槽里。亚克力灯罩齐平灯体, 照射面积更大
- 3mm extremely narrow light surface, more exquisite light
3mm 极窄发光面, 发光更精致

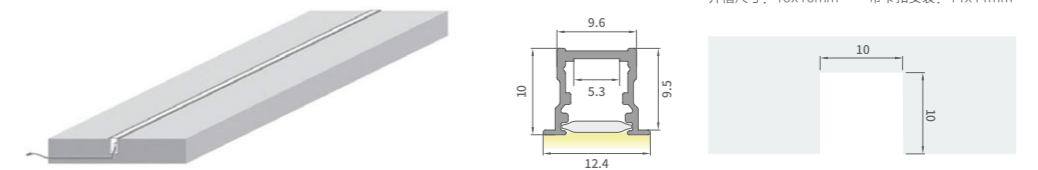
→ TECHNICAL DETAILS / 技术参数



MODEL 型号	LENGTH x WIDTH x HEIGHT(mm) 长 x 宽 x 高 (mm)	POWER 功率 (W)	CCT 色温 (K)	LIGHT SOURCE 光源	VOLTAGE 电压 (V)	COLOR RENDERING INDEX 显指 (CRI)	SWITCH 开关	DRIVE 驱动
LT3115.NA.3M. NW.GR	3000x12.4x10	28.5	<ul style="list-style-type: none"> ■ WW:3000K ■ NW:4000K ■ CW:6000K 	COB 320珠/米	12	> 90	外接开关	恒压驱动



→ INSTALLATION INSTRUCTION / 安装说明



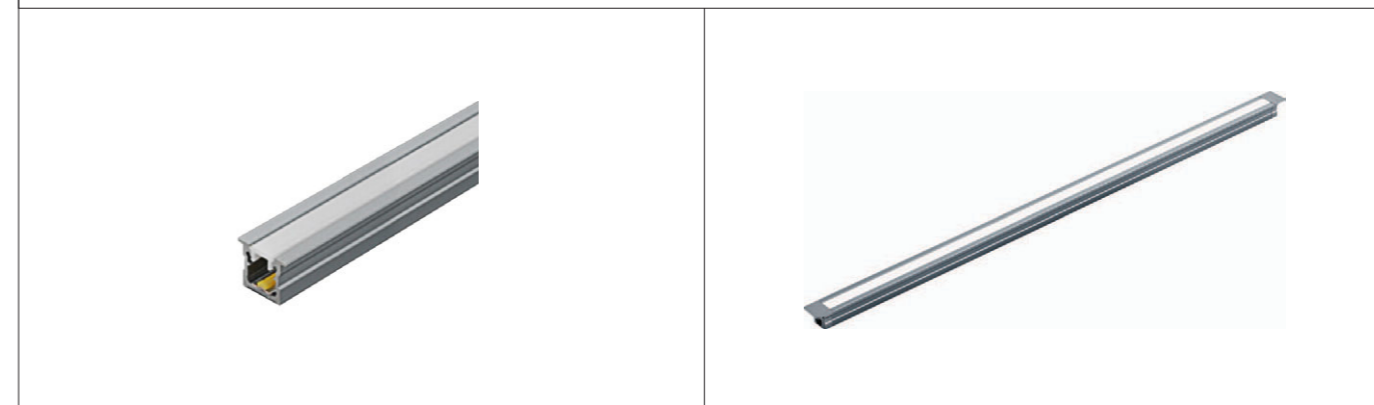
* 灯体长度可裁切, 可按需求定制尺寸



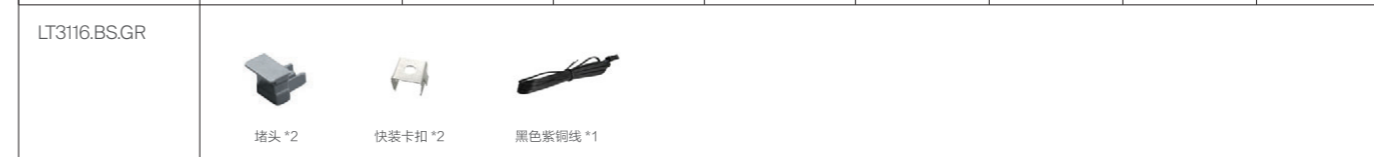
→ FEATURES / 产品特点

- Spraying treatment on surface of light body, high transmission of acrylic lampshade up to 95%
灯体表面喷涂工艺, 采用亚克力灯罩透光均匀, 亚克力透光率高达 95%
- 3mm extremely narrow light surface, more exquisite light
3mm 极窄发光面, 发光更精致
- Plug-and-pull design, lamp can be separated from the line
插拔设计, 可灯线分离
- Color: Grey
颜色: 绅士灰
- Insert design, almost flush mounted in pre-slotting. The acrylic lampshade is same height with the lamp body, allowing a larger irradiation area.
嵌入式按压面罩设计, 几乎齐平安装于预开槽里。亚克力灯罩齐平灯体, 照射面积更大

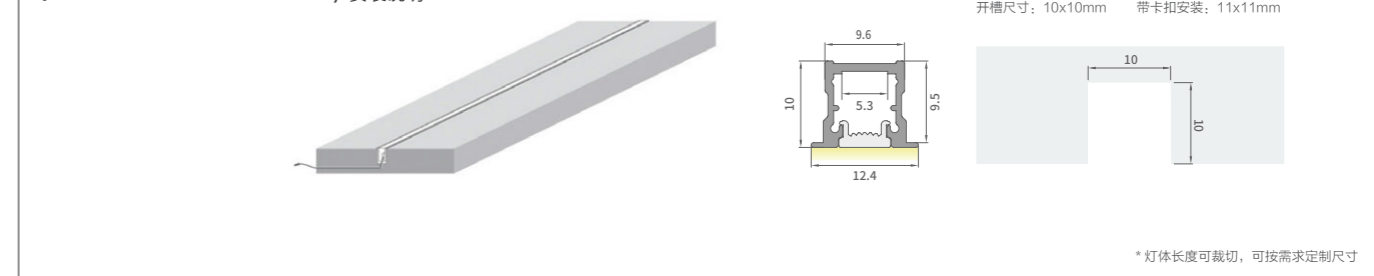
→ TECHNICAL DETAILS / 技术参数



MODEL 型号	LENGTH x WIDTH x HEIGHT(mm) 长 x 宽 x 高 (mm)	POWER 功率 (W)	CCT 色温 (K)	LIGHT SOURCE 光源	VOLTAGE 电压 (V)	COLOR RENDERING INDEX 显指 (CRI)	SWITCH 开关	DRIVE 驱动
LT3116.NA.3M. NW.GR	3000x12.4x10	28.5	<ul style="list-style-type: none"> ■ WW:3000K ■ NW:4000K ■ CW:6000K 	COB 320珠/米	12	> 90	外接开关	恒压驱动



→ INSTALLATION INSTRUCTION / 安装说明





免焊嵌入式灯条



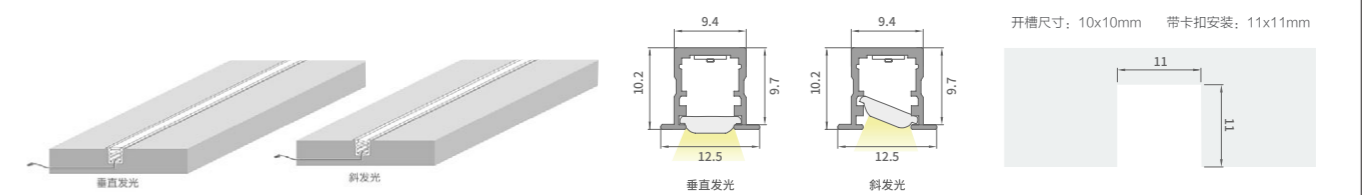
→ FEATURES / 产品特点

- 3mm extremely narrow light surface, more exquisite light
3mm 极窄发光面, 发光更精致
- Spraying treatment on surface of light body, high transmission of acrylic lampshade up to 95%
灯体表面喷涂工艺, 采用亚克力灯罩透光均匀, 亚克力透光率高达 95%
- Plug-and-pull design, lamp can be separated from the line
插拔设计, 可灯线分离
- Insert design, almost flush mounted in pre-slotting. The acrylic lampshade can be adjusted to two angles, reaching both Vertical glowing & oblique glowing
嵌入式设计, 几乎齐平安装于预开槽里。亚克力灯罩两种角度调节, 可实现垂直发光或斜发光
- Color: Grey
颜色: 绅士灰

→ TECHNICAL DETAILS / 技术参数

MODEL 型号	LENGTH x WIDTH x HEIGHT(mm) 长 x 宽 x 高 (mm)	POWER 功率 (W)	CCT 色温 (K)	LIGHT SOURCE 光源	VOLTAGE 电压 (V)	COLOR RENDERING INDEX 显指 (CRI)	SWITCH 开关	DRIVE 驱动
LT3117.NA.3M. NW.GR	3000x12.4x10	28.5	<ul style="list-style-type: none"> ■ WW:3000K ■ NW:4000K ■ CW:6000K 	2016	12	> 90	外接开关	恒压驱动
LT3117.BS.TR	<p>水晶堵头 *2 快装卡扣 *2 透明紫铜线 *1</p>							

→ INSTALLATION INSTRUCTION / 安装说明



* 灯体长度可裁切, 可按需求定制尺寸

Welding Free Insert Lamp Strip-Press Mask



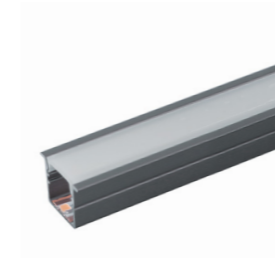
免焊嵌入式灯条 - 按压面罩



→ FEATURES / 产品特点

- 3mm extremely narrow light surface, more exquisite light
3mm 极窄发光面, 发光更精致
- Spraying treatment on surface of light body, high transmission of acrylic lampshade up to 95%
灯体表面喷涂工艺, 采用亚克力灯罩透光均匀, 亚克力透光率高达 95%
- Plug-and-pull design, lamp can be separated from the line
插拔设计, 可灯线分离
- Insert design with press mask, almost flush mounted in pre-slotting. The acrylic lampshade is same height with the lamp body, allowing a larger irradiation area.
嵌入式按压面罩设计, 几乎齐平安装于预开槽里。亚克力灯罩齐平灯体, 照射面积更大
- Color: Grey
颜色: 绅士灰

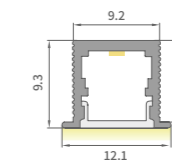
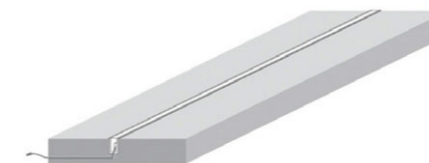
→ TECHNICAL DETAILS / 技术参数



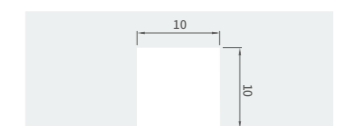
MODEL 型号	LENGTH x WIDTH x HEIGHT(mm) 长 x 宽 x 高 (mm)	POWER 功率 (W)	CCT 色温 (K)	LIGHT SOURCE 光源	VOLTAGE 电压 (V)	COLOR RENDERING INDEX 显指 (CRI)	SWITCH 开关	DRIVE 驱动
LT3118.NA.3M. NW.GR	3000x12.4x10	28.5	<ul style="list-style-type: none"> ■ WW:3000K ■ NW:4000K ■ CW:6000K 	2016	12	> 90	外接开关	恒压驱动

LT3118.BS.TR	<p>水晶堵头 *2 快装卡扣 *2 透明紫铜线 *1</p>							
--------------	---------------------------------------	--	--	--	--	--	--	--

→ INSTALLATION INSTRUCTION / 安装说明



开槽尺寸: 10x10mm 带卡扣安装: 11x11mm



* 灯体长度可裁切, 可按需求定制尺寸

Welding Free Recessed 45 Degree Light Strip-Penetration Mask



免焊嵌入式 45 度发光灯条 - 穿插面罩



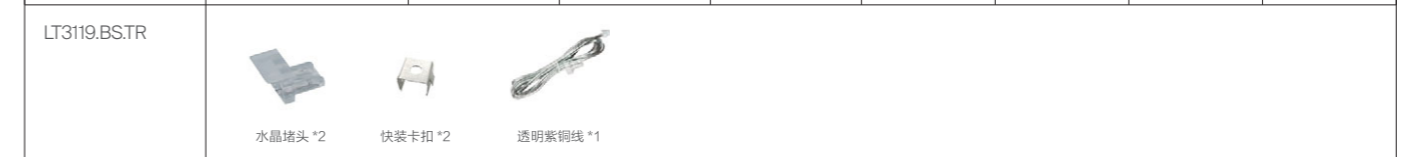
→ FEATURES / 产品特点

- Spraying treatment on surface of light body, high transmission of acrylic lampshade up to 95%
灯体表面喷涂工艺, 采用亚克力灯罩透光均匀, 亚克力透光率高达 95%
- 3mm extremely narrow light surface, more exquisite light
3mm 极窄发光面, 发光更精致
- Plug-and-pull design, lamp can be separated from the line
插拔设计, 可灯线分离
- Color: Grey
颜色: 绅士灰
- Insert design with press mask, almost flush mounted in pre-slotting. The acrylic lampshade is 45 degree to the lamp body, providing a soft lamplight without be dazzling
嵌入式按压面罩设计, 几乎齐平安装于预开槽里。亚克力灯罩与灯体成 45°, 可实现见光不见灯

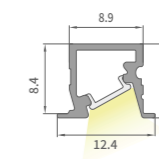
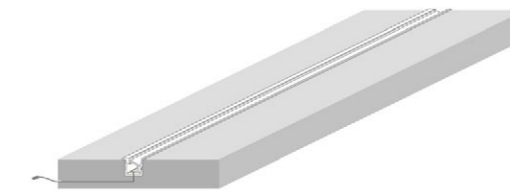
→ TECHNICAL DETAILS / 技术参数



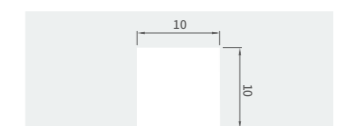
MODEL 型号	LENGTH x WIDTH x HEIGHT(mm) 长 x 宽 x 高 (mm)	POWER 功率 (W)	CCT 色温 (K)	LIGHT SOURCE 光源	VOLTAGE 电压 (V)	COLOR RENDERING INDEX 显指 (CRI)	SWITCH 开关	DRIVE 驱动
LT3119.NA.3M. NW.GR	3000x11.8x10	28.5	<ul style="list-style-type: none"> ■ WW:3000K ■ NW:4000K ■ CW:6000K 	2016	12	> 90	外接开关	恒压驱动



→ INSTALLATION INSTRUCTION / 安装说明



开槽尺寸: 10x10mm 带卡扣安装: 11x11mm



* 灯体长度可裁切, 可按需求定制尺寸

Welding Free Recessed 45 Degree Light Strip



免焊嵌入式 45 度发光灯条



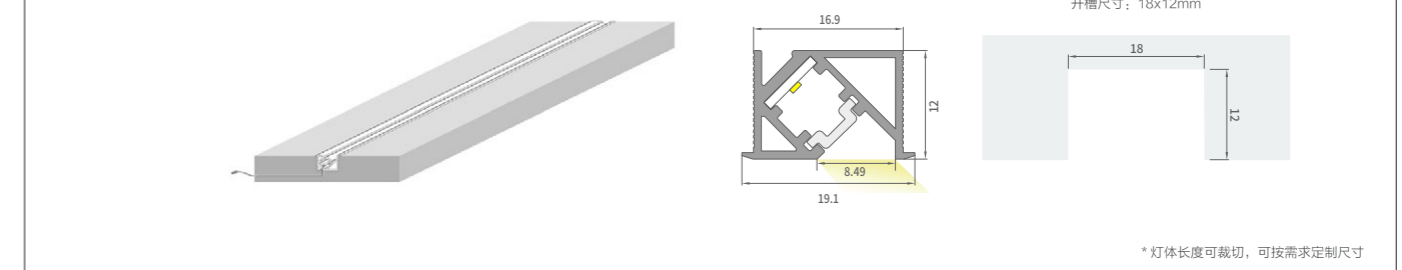
→ FEATURES / 产品特点

- Spraying treatment on surface of light body, high transmission of acrylic lampshade up to 95%
灯体表面喷涂工艺, 采用亚克力灯罩透光均匀, 亚克力透光率高达 95%
- 3mm extremely narrow light surface, more exquisite light
3mm 极窄发光面, 发光更精致
- Plug-and-pull design, lamp can be separated from the line
插拔设计, 可灯线分离
- Insert design, almost flush mounted in pre-slotting. The acrylic lampshade is 45 degree to the lamp body, providing a soft lamplight without be dazzling
嵌入式设计, 几乎齐平安装于预开槽里。亚克力灯罩与灯体成 45 度, 可实现见光不见灯
- Color: Grey
颜色: 绅士灰

→ TECHNICAL DETAILS / 技术参数

MODEL 型号	LENGTH x WIDTH x HEIGHT(mm) 长 x 宽 x 高 (mm)	POWER 功率 (W)	CCT 色温 (K)	LIGHT SOURCE 光源	VOLTAGE 电压 (V)	COLOR RENDERING INDEX 显指 (CRI)	SWITCH 开关	DRIVE 驱动
LT3120.NA.3M. NW.GR	3000x19.1x12	28.5	<ul style="list-style-type: none"> ■ WW:3000K ■ NW:4000K ■ CW:6000K 	2016	12	> 90	外接开关	恒压驱动
LT3120.BS.TR	<p>水晶堵头 *2 快装卡扣 *2 透明紫铜线 *1</p>							

→ INSTALLATION INSTRUCTION / 安装说明





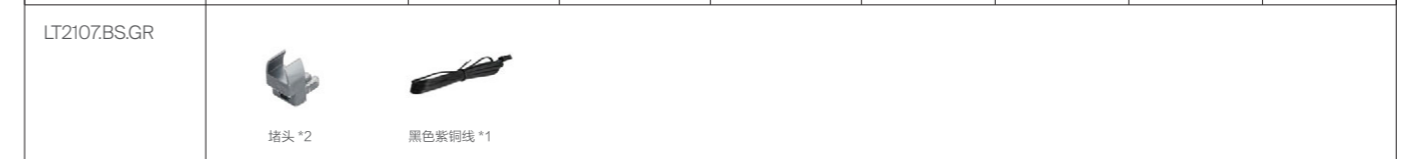
→ FEATURES / 产品特点

- Spraying treatment on surface of light body, high transmission of acrylic lampshade up to 95%
灯体表面喷涂工艺, 采用亚克力灯罩透光均匀, 亚克力透光率高达 95%
- Plug-and-pull design, lamp can be separated from the line
插拔设计, 可灯线分离
- Insert easy installation, high permeability acrylic lamp shade, soft light conduction, bright & uniform, suitable for 8mm thick glass
嵌入式简易安装, 高透亚克力灯罩, 导光柔和, 光亮均匀, 夹 8mm 玻璃
- Color: Grey
颜色: 绅士灰
- 3mm extremely narrow light surface, more exquisite light
3mm 极窄发光面, 发光更精致

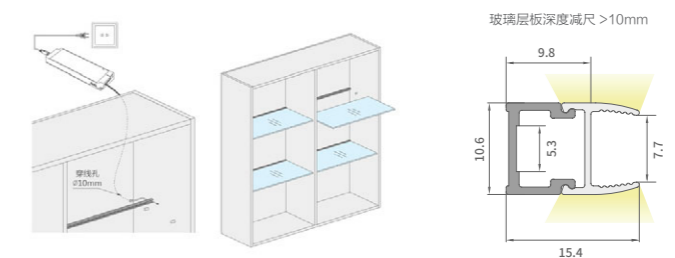
→ TECHNICAL DETAILS / 技术参数



MODEL 型号	LENGTH x WIDTH x HEIGHT(mm) 长 x 宽 x 高 (mm)	POWER 功率 (W)	CCT 色温 (K)	LIGHT SOURCE 光源	VOLTAGE 电压 (V)	COLOR RENDERING INDEX 显指 (CRI)	SWITCH 开关	DRIVE 驱动
LT2107.NA.3M. NW.GR	3000x10.6x15.4	28.5	<ul style="list-style-type: none"> ■ WW:3000K ■ NW:4000K ■ CW:6000K 	COB 320 珠/米	12	> 90	外接开关	恒压驱动



→ INSTALLATION INSTRUCTION / 安装说明



* 灯体长度可裁切, 可按需求定制尺寸



免焊卡玻璃层板灯条



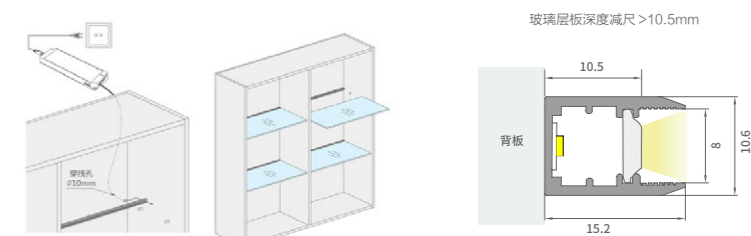
→ FEATURES / 产品特点

- Spraying treatment on surface of light body , high transmission of acrylic lampshade up to 95%
灯体表面喷涂工艺, 采用亚克力灯罩透光均匀, 亚克力透光率高达 95%
- 3mm extremely narrow light surface, more exquisite light
3mm 极窄发光面, 发光更精致
- Plug-and-pull design, lamp can be separated from the line
插拔设计, 可灯线分离
- Insert easy installation, high permeability acrylic lampshade, soft light conduction, bright & uniform, suitable for 8mm thick glass, suitable for 18mm shelf
嵌入式简易安装, 高透亚克力灯罩, 导光柔和, 光亮均匀, 夹 8mm 玻璃, 可前后置卡玻璃层板
- Color: Grey
颜色: 绅士灰

→ TECHNICAL DETAILS / 技术参数

MODEL 型号	LENGTH x WIDTH x HEIGHT(mm) 长 x 宽 x 高 (mm)	POWER 功率 (W)	CCT 色温 (K)	LIGHT SOURCE 光源	VOLTAGE 电压 (V)	COLOR RENDERING INDEX 显指 (CRI)	SWITCH 开关	DRIVE 驱动
LT2109.NA.3M. NW.GR	3000x15.2x10.6	28.5	<ul style="list-style-type: none"> ■ WW:3000K ■ NW:4000K ■ CW:6000K 	2016	12	> 90	外接开关	恒压驱动
LT2109.BS.TR	 水晶堵头 *2  透明紫铜线 *1							

→ INSTALLATION INSTRUCTION / 安装说明



* 灯体长度可裁切, 可按需求定制尺寸

Welding Free 18MM Shelf Light Strip



免焊 18MM 后置层板灯条



→ FEATURES / 产品特点

- Spraying treatment on surface of light body, high transmission of acrylic lampshade up to 95%
灯体表面喷涂工艺, 采用亚克力灯罩透光均匀, 亚克力透光率高达 95%
- No grooving, no disassembly, soft light up and down, suitable for 18mm shelf
免开槽、免拆板, 上下发光, 光线柔和不刺眼, 适用于 18mm 层板
- 3mm extremely narrow light surface, more exquisite light
3mm 极窄发光面, 发光更精致
- Plug-and-pull design, lamp can be separated from the line
插拔设计, 可灯线分离
- Color: Grey
颜色: 绅士灰

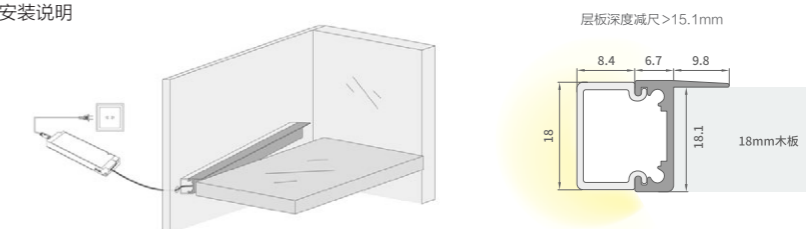
→ TECHNICAL DETAILS / 技术参数



MODEL 型号	LENGTH x WIDTH x HEIGHT(mm) 长 x 宽 x 高 (mm)	POWER 功率 (W)	CCT 色温 (K)	LIGHT SOURCE 光源	VOLTAGE 电压 (V)	COLOR RENDERING INDEX 显指 (CRI)	SWITCH 开关	DRIVE 驱动
LT2108.NA.3M. NW.GR	3000x15.1x18	28.5	<ul style="list-style-type: none"> ■ WW:3000K ■ NW:4000K ■ CW:6000K 	COB 320珠/米	12	> 90	外接开关	恒压驱动

LT2108.BS,GR	<p>堵头 *2 黑色紫铜线 *1</p>							
--------------	----------------------------	--	--	--	--	--	--	--

→ INSTALLATION INSTRUCTION / 安装说明



* 灯体长度可裁切, 可按需求定制尺寸

Welding Free 16MM Shelf Light Strip



免焊 16MM 后置层板灯条



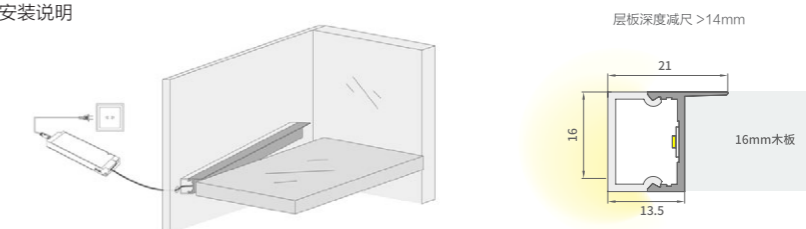
→ FEATURES / 产品特点

- Spraying treatment on surface of light body, high transmission of acrylic lampshade up to 95%
灯体表面喷涂工艺, 采用亚克力灯罩透光均匀, 亚克力透光率高达 95%
- No grooving, no disassembly, light up and down, soft light is not dazzling, suitable for 16mm shelf
免开槽、免拆板, 上下发光, 光线柔和不刺眼, 适用于 16mm 层板
- 3mm extremely narrow light surface, more exquisite light
3mm 极窄发光面, 发光更精致
- Plug-and-pull design, lamp can be separated from the line
插拔设计, 可灯线分离
- Color: Grey
颜色: 绅士灰

→ TECHNICAL DETAILS / 技术参数

								
MODEL 型号	LENGTH x WIDTH x HEIGHT(mm) 长 x 宽 x 高 (mm)	POWER 功率 (W)	CCT 色温 (K)	LIGHT SOURCE 光源	VOLTAGE 电压 (V)	COLOR RENDERING INDEX 显指 (CRI)	SWITCH 开关	DRIVE 驱动
LT2110.NA.3M. NW.GR	3000x21.05x16	28.5	<ul style="list-style-type: none"> ■ WW:3000K ■ NW:4000K ■ CW:6000K 	2016	12	> 90	外接开关	恒压驱动
LT2110.BS.RJ	 		水晶堵头 *2 透明紫铜线 *1					

→ INSTALLATION INSTRUCTION / 安装说明



* 灯体长度可裁切, 可按需求定制尺寸

Ultra-Thin Welding Free Light Strip



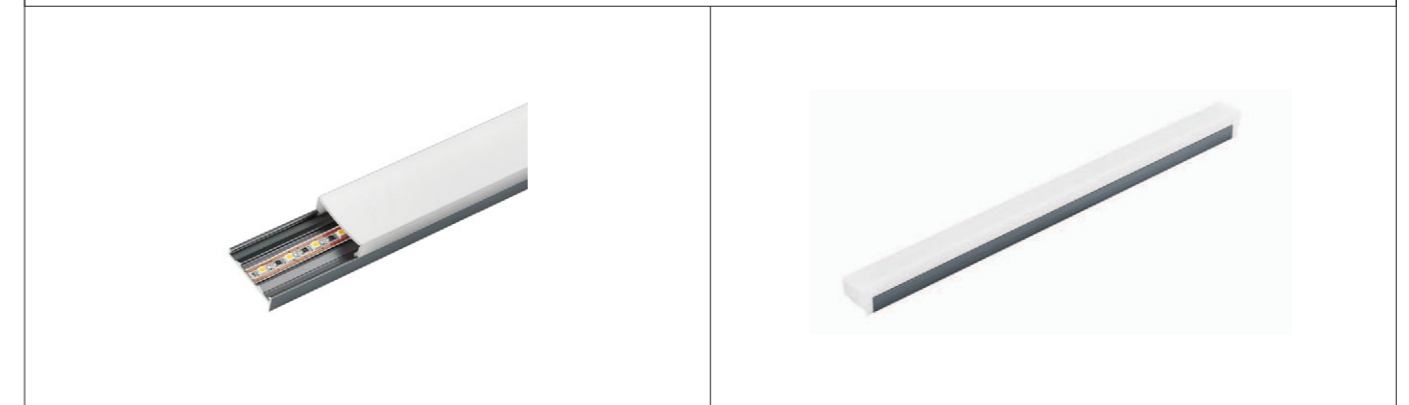
超薄免焊 18MM 后置层板灯条



→ FEATURES / 产品特点

- Spraying treatment on surface of light body, high transmission of acrylic lampshade up to 95%
灯体表面喷涂工艺, 采用亚克力灯罩透光均匀, 亚克力透光率高达 95%
- Ultra-thin LED strip, more concise and fashionable, no grooving, no disassembly, light up and down, soft and not dazzling, suitable for 18mm shelf
灯体超薄, 更简洁时尚, 免开槽、免拆板, 上下发光, 光线柔和不刺眼, 适用于 18mm 层板
- 3mm extremely narrow light surface, more exquisite light
3mm 极窄发光面, 发光更精致
- Plug-and-pull design, lamp can be separated from the line
插拔设计, 可灯线分离
- Color: Grey
颜色: 绅士灰

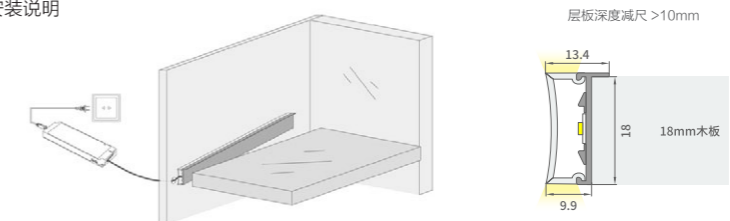
→ TECHNICAL DETAILS / 技术参数



MODEL 型号	LENGTH x WIDTH x HEIGHT(mm) 长 x 宽 x 高 (mm)	POWER 功率 (W)	CCT 色温 (K)	LIGHT SOURCE 光源	VOLTAGE 电压 (V)	COLOR RENDERING INDEX 显指 (CRI)	SWITCH 开关	DRIVE 驱动
LT2111.NA.3M. NW.GR	3000x13.4x18	28.5	<ul style="list-style-type: none"> ■ WW:3000K ■ NW:4000K ■ CW:6000K 	2016	12	> 90	外接开关	恒压驱动

LT2111.BS.TR	<p>水晶堵头 *2 透明紫铜线 *1</p>							
--------------	------------------------------	--	--	--	--	--	--	--

→ INSTALLATION INSTRUCTION / 安装说明



* 灯体长度可裁切, 可按需求定制尺寸



免焊吊柜免拉手灯条



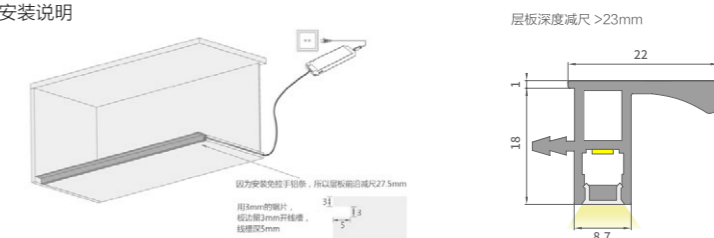
→ FEATURES / 产品特点

- Spraying treatment on surface of light body, high transmission of acrylic lampshade up to 95%
灯体表面喷涂工艺, 采用亚克力灯罩透光均匀, 亚克力透光率高达 95%
- No need to install the cabinet handle, high penetration acrylic lampshade, light is soft and not dazzling
无需明装拉手, 高透亚克力灯罩, 光线柔和不刺眼, 吊柜更加简洁
- 3mm extremely narrow light surface, more exquisite light
3mm 极窄发光面, 发光更精致
- Plug-and-pull design, lamp can be separated from the line
插拔设计, 可灯线分离
- Color: Grey
颜色: 绅士灰

→ TECHNICAL DETAILS / 技术参数

								
MODEL 型号	LENGTH x WIDTH x HEIGHT(mm) 长 x 宽 x 高 (mm)	POWER 功率 (W)	CCT 色温 (K)	LIGHT SOURCE 光源	VOLTAGE 电压 (V)	COLOR RENDERING INDEX 显指 (CRI)	SWITCH 开关	DRIVE 驱动
LT2112.NA.3M. NW.GR	3000x22x18	28.5	<ul style="list-style-type: none"> ■ WW:3000K ■ NW:4000K ■ CW:6000K 	2016	12	> 90	外接开关	恒压驱动
LT2112.BS.TR	 <p>透明紫铜线 *1</p>							

→ INSTALLATION INSTRUCTION / 安装说明



* 灯体长度可裁切, 可按需求定制尺寸



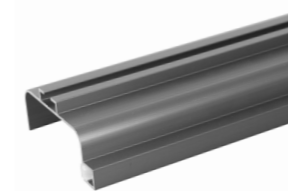
免焊地柜免拉手灯条




→ FEATURES / 产品特点

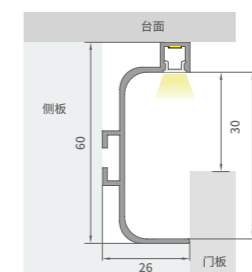
- Spraying treatment on surface of light body, high transmission of acrylic lampshade up to 95%
灯体表面喷涂工艺, 采用亚克力灯罩透光均匀, 亚克力透光率高达 95%
- Plug-and-pull design, lamp can be separated from the line
插拔设计, 可灯线分离
- Insert installation, C shape, high permeability acrylic lamp shade with soft light
嵌入式安装, C 字型, 手感舒适, 高透亚克力灯罩, 光线柔和不刺眼
- 3mm extremely narrow light surface, more exquisite light
3mm 极窄发光面, 发光更精致
- Color: Grey
颜色: 绅士灰

→ TECHNICAL DETAILS / 技术参数



MODEL 型号	LENGTH x WIDTH x HEIGHT(mm) 长 x 宽 x 高 (mm)	POWER 功率 (W)	CCT 色温 (K)	LIGHT SOURCE 光源	VOLTAGE 电压 (V)	COLOR RENDERING INDEX 显指 (CRI)	SWITCH 开关	DRIVE 驱动
LT1186.NA.3M. NW.GR	3000x60x26	28.5	<ul style="list-style-type: none"> ■ WW:3000K ■ NW:4000K ■ CW:6000K 	2016	12	> 90	外接开关	恒压驱动
LT1186.BS.TR	 透明紫铜线 *1							

→ INSTALLATION INSTRUCTION / 安装说明



* 灯体长度可裁切, 可按需求定制尺寸

Welding Free Handle Free Cabinet Led Strip



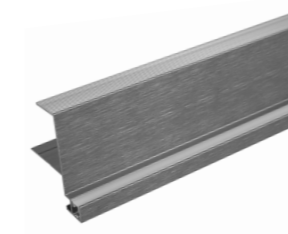
免焊高柜单门免拉手灯条




→ FEATURES / 产品特点

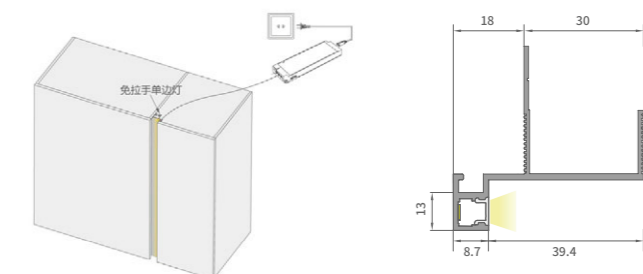
- Spraying treatment on surface of light body, high transmission of acrylic lampshade up to 95%
灯体表面喷涂工艺, 采用亚克力灯罩透光均匀, 亚克力透光率高达 95%
- Hidden installation LED strip, high transparent acrylic lampshade, light is soft and not dazzling
隐藏安装于单开门高柜竖装柜体上, 高透亚克力灯罩, 光线柔和不刺眼, 高柜更加简洁
- 3mm extremely narrow light surface, more exquisite light
3mm 极窄发光面, 发光更精致
- Plug-and-pull design, lamp can be separated from the line
插拔设计, 可灯线分离
- Color: Grey
颜色: 绅士灰

→ TECHNICAL DETAILS / 技术参数



MODEL 型号	LENGTH x WIDTH x HEIGHT(mm) 长 x 宽 x 高 (mm)	POWER 功率 (W)	CCT 色温 (K)	LIGHT SOURCE 光源	VOLTAGE 电压 (V)	COLOR RENDERING INDEX 显指 (CRI)	SWITCH 开关	DRIVE 驱动
LT1187.NA.3M. NW.GR	3000x48x13	28.5	<ul style="list-style-type: none"> ■ WW:3000K ■ NW:4000K ■ CW:6000K 	2016	12	> 90	外接开关	恒压驱动
LT1187.BS.TR	 <p>透明紫铜线 *1</p>							

→ INSTALLATION INSTRUCTION / 安装说明



* 灯体长度可裁切, 可按需求定制尺寸



免焊高柜双门免拉手灯条



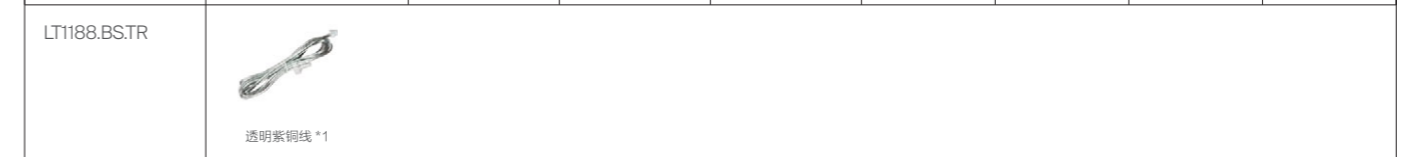
→ FEATURES / 产品特点

- Spraying treatment on surface of light body, high transmission of acrylic lampshade up to 95%
灯体表面喷涂工艺, 采用亚克力灯罩透光均匀, 亚克力透光率高达 95%
- Hidden installation cabinet body, high transparent acrylic lampshade, light is soft and not dazzling
隐藏安装于双开门高柜竖装柜体上, 高透亚克力灯罩, 光线柔和不刺眼, 高柜更加简洁
- 3mm extremely narrow light surface, more exquisite light
3mm 极窄发光面, 发光更精致
- Plug-and-pull design, lamp can be separated from the line
插拔设计, 可灯线分离
- Color: Grey
颜色: 绅士灰

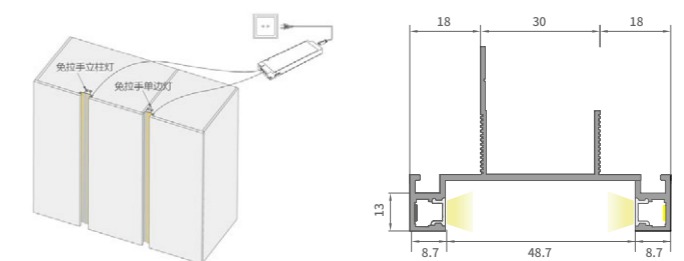
→ TECHNICAL DETAILS / 技术参数



MODEL 型号	LENGTH x WIDTH x HEIGHT(mm) 长 x 宽 x 高 (mm)	POWER 功率 (W)	CCT 色温 (K)	LIGHT SOURCE 光源	VOLTAGE 电压 (V)	COLOR RENDERING INDEX 显指 (CRI)	SWITCH 开关	DRIVE 驱动
LT1188.NA.3M. NW.GR	3000x66x13	28.5	<ul style="list-style-type: none"> ■ WW:3000K ■ NW:4000K ■ CW:6000K 	2016	12	> 90	外接开关	恒压驱动



→ INSTALLATION INSTRUCTION / 安装说明



* 灯体长度可裁切, 可按需求定制尺寸

免焊脚线灯条



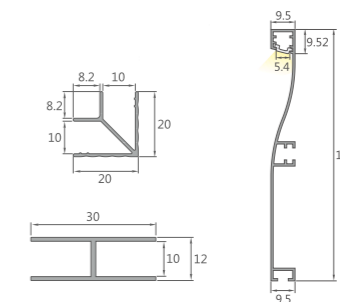
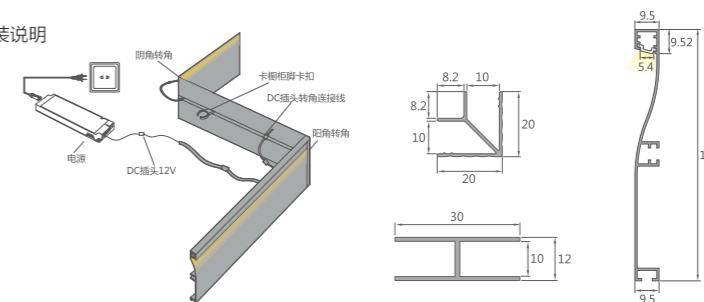
→ FEATURES / 产品特点

- Spraying treatment on surface of light body, high transmission of acrylic lampshade up to 95%
灯体表面喷涂工艺, 采用亚克力灯罩透光均匀, 亚克力透光率高达 95%
- Easy installation, beautiful and good concealment, multi-scene application, soft light is not dazzling
安装便捷, 美观且隐蔽性好, 多场景应用, 光线柔和不刺眼
- 3mm extremely narrow light surface, more exquisite light
3mm 极窄发光面, 发光更精致
- Plug-and-pull design, lamp can be separated from the line
插拔设计, 可灯线分离
- Color: Grey
颜色: 绅士灰

→ TECHNICAL DETAILS / 技术参数

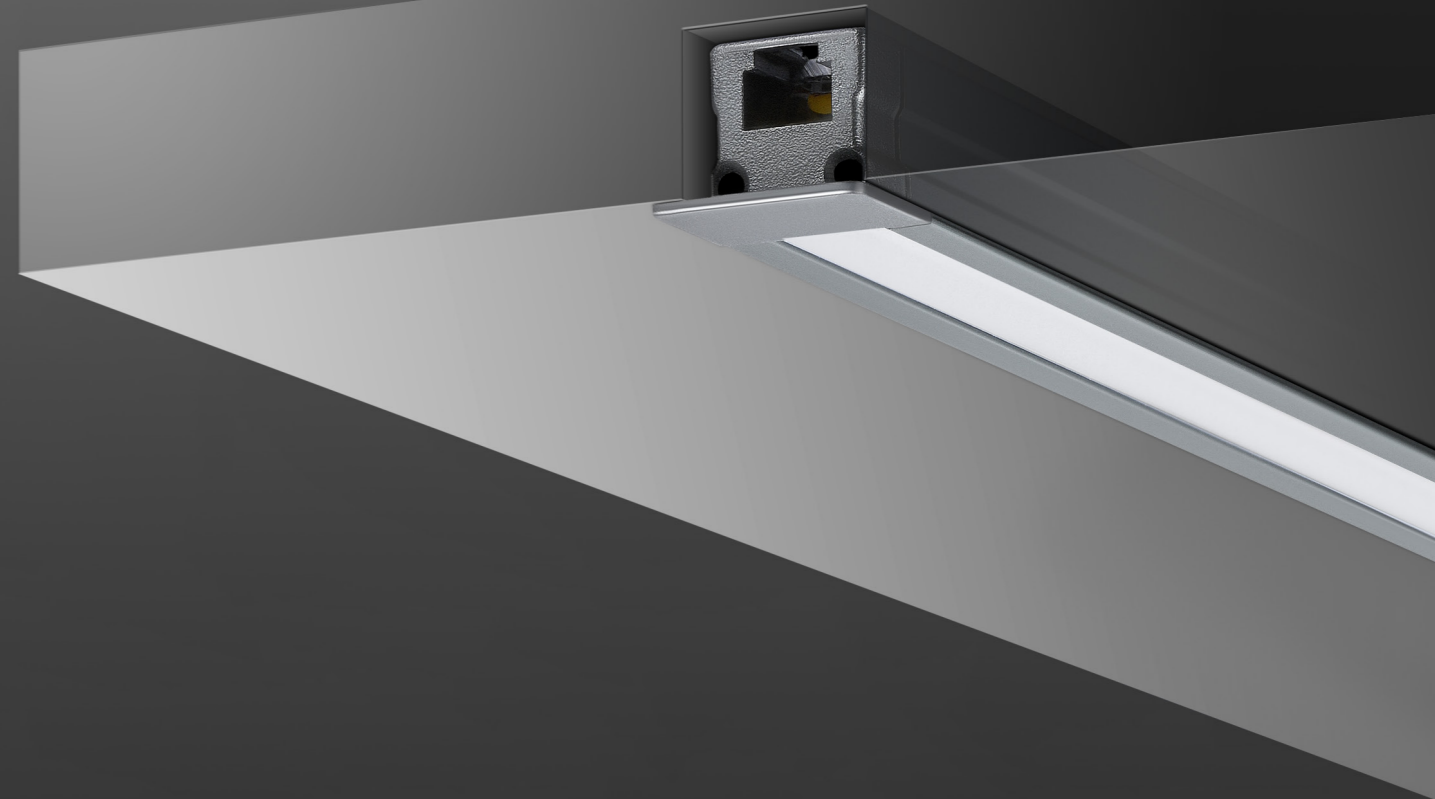
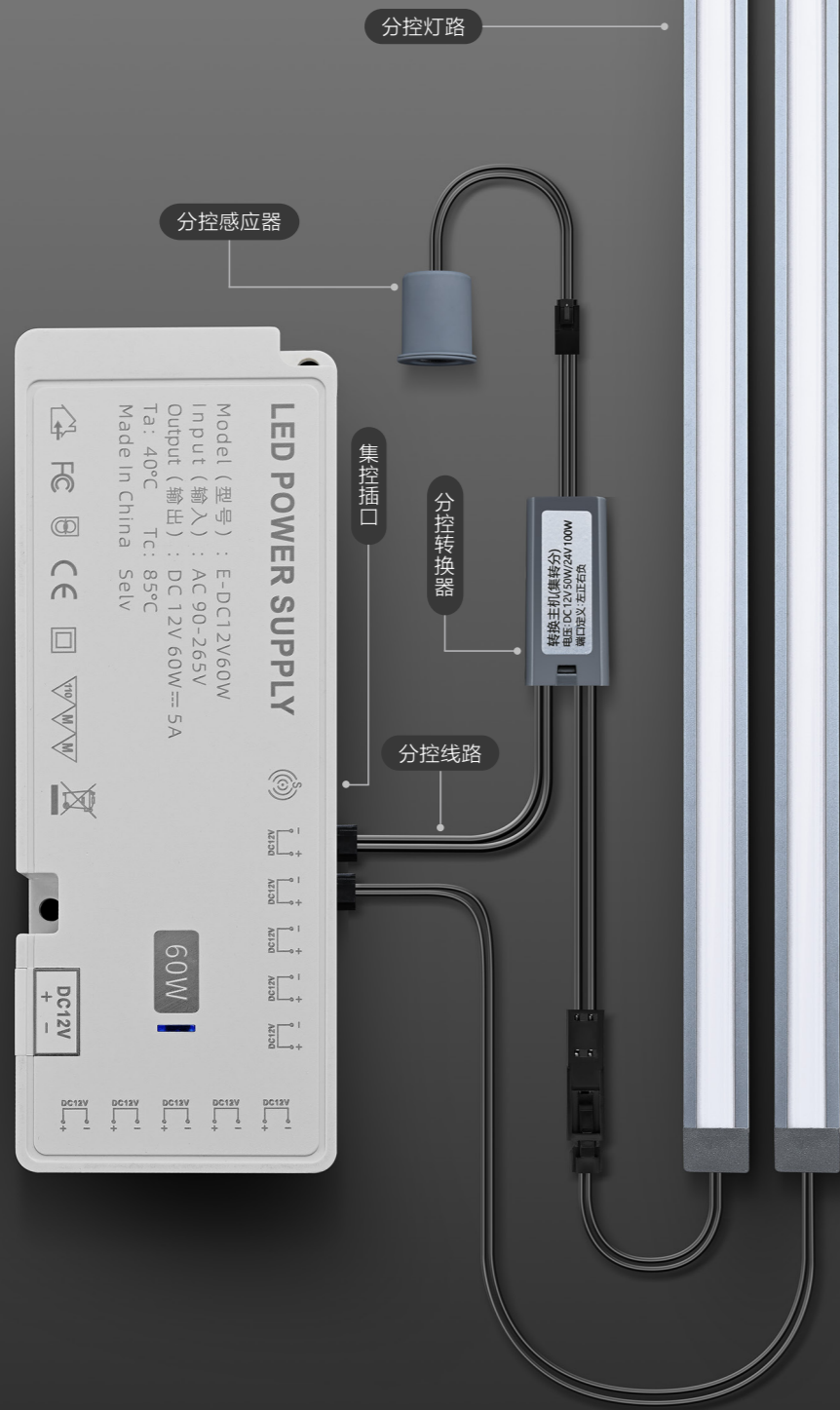
								
MODEL 型号	LENGTH x WIDTH x HEIGHT(mm) 长 x 宽 x 高 (mm)	POWER 功率 (W)	CCT 色温 (K)	LIGHT SOURCE 光源	VOLTAGE 电压 (V)	COLOR RENDERING INDEX 显指 (CRI)	SWITCH 开关	DRIVE 驱动
LT1189.NA.3M. NW.GR	3000x100x9.1	28.5	<ul style="list-style-type: none"> ■ WW:3000K ■ NW:4000K ■ CW:6000K 	2016	12	> 90	外接开关	恒压驱动
LT1189.BS.RJ	 透明紫铜线 *1							

→ INSTALLATION INSTRUCTION / 安装说明

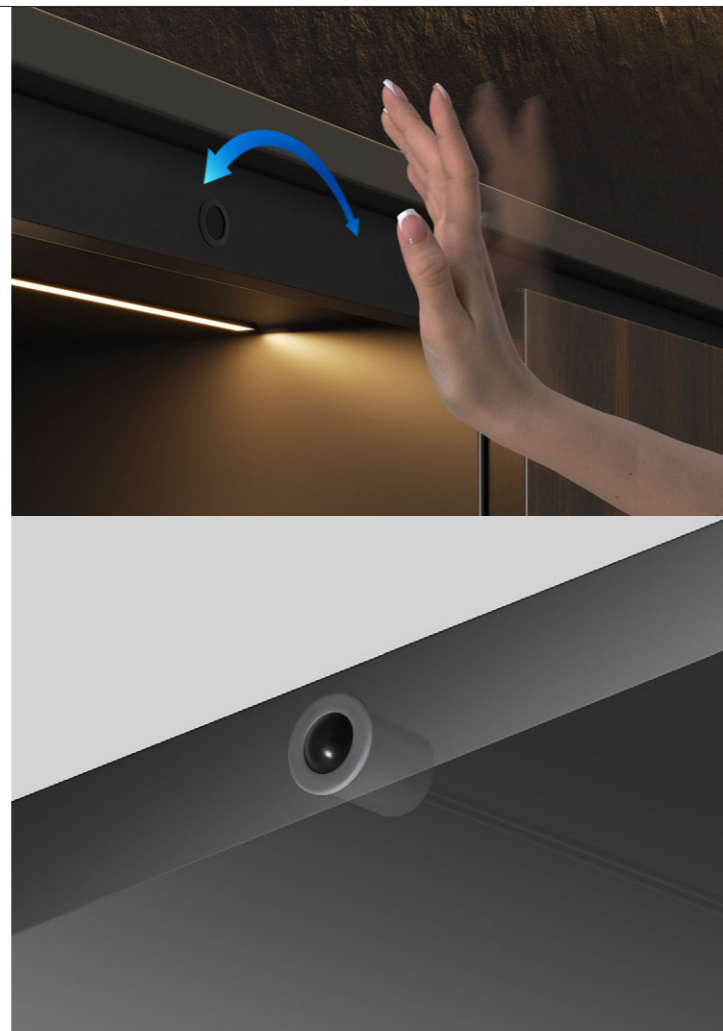


* 灯体长度可裁切, 可按需求定制尺寸

Unihopper lighting recessed installation,dazzling
splendor, writing minimalist atmosphere.
库博照明灯光嵌入式安装，耀眼盛放，谱写极简光影。



Hand Swept Sensor: Wave to control the light on and off
手扫感应: 挥手控制亮灭



Touch Sensor: Long touching switch
触摸感应: 长触开关



Human Sensor: When people get close, it lights up
人体感应: 人靠近即亮

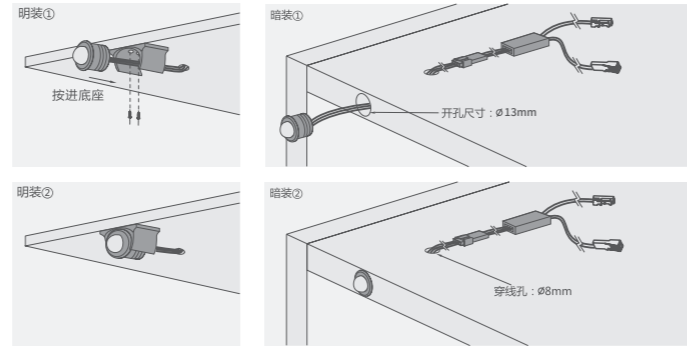


Door Touch Sensor: Opening & closing the cabinet door will get the light on & off
门碰感应: 开关柜门即亮即灭



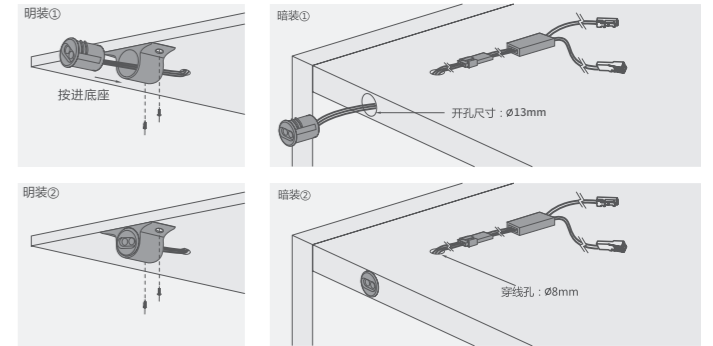
SURFACE MOUNTED/ INSERT MOUNTED CENTRALIZED TOUCH SWITCH
明 / 暗装集控触摸开关

MODEL 型号	LENGTH x WIDTH (mm) 长 x 宽	OPENING DIAMETER 开孔直径 (mm)	WIRE LENGTH (m) 线长
E24.TS	13x15	13	2



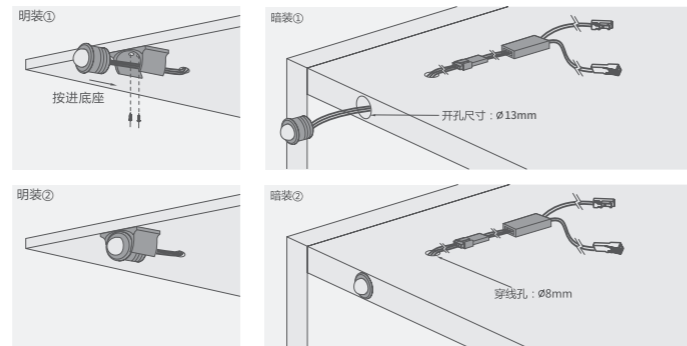
SURFACE MOUNTED/ INSERT MOUNTED CENTRALIZED HAND SWEEP SINGLE GATE SWITCH
明 / 暗装集控手扫单门控开关

MODEL 型号	LENGTH x WIDTH (mm) 长 x 宽	OPENING DIAMETER 开孔直径 (mm)	WIRE LENGTH (m) 线长
E24.BR	13x15	13	2



SURFACE MOUNTED/ INSERT MOUNTED CENTRALIZED CONTROL BODY SENSING SWITCH
明 / 暗装集控人体感应开关

MODEL 型号	LENGTH x WIDTH (mm) 长 x 宽	OPENING DIAMETER 开孔直径 (mm)	WIRE LENGTH (m) 线长
E24.IR	13x15	13	2



CONSTANT VOLTAGE POWER SUPPLY
恒压电源



MODEL 型号	POWER (W) 功率	PORT 接口
E25.36W	36	一拖五
E26.60W	60	一拖十
E26.100W	100	一拖十
E26.150W	150	一拖十

SURFACE MOUNTED/ INSERT MOUNTED CENTRALIZED CONTROL DOUBLE GATED SWITCH
明 / 暗装集控双门控开关

MODEL 型号	LENGTH x WIDTH (mm) 长 x 宽	OPENING DIAMETER 开孔直径 (mm)	WIRE LENGTH (m) 线长
E24.DS	13x15	13	2

