



广东库博精密科技集团股份有限公司

GUANGDONG UNIHOPPER PRECISION TECHNOLOGY
CROUP CO.,LTD

运营中心：广州市天河区天河路 242 号丰兴广场 B 栋 2404 室
Operating center: Rm2404 Building B, Fengxing Plaza, No.242,
Tianhe Rd, Tianhe District, Guangzhou City

总部：肇庆高新技术产业开发区创业路 9 号库博工业园
Headquarter: Unihopper industrial park, No.9 Chuangye
road, High-tech Industrial Development Zone ,Zhaoqing City,
Guangdong Province, China

TEL: 0758-3212900/3212901
FAX: 0758-3212902
E-mail: sales@unihopper.biz

 www.unihopper.biz

2410.



公众号



微官网

库博五金保留在不影响功能质量前提下，适当改动尺寸、外型而不另行通知。实际产品会因印刷原因与样本上有少许色差，产品图片尺寸误差以实物为准
On the premise of not influence the function and uality,Grasshopper reserves the right of changing the size,outlook without notice.
There will be a little color difference between the product in presswork and definite object.The correct size of the product subject to definite object.



MONA

Designed by UNIHOPPER



MONA 梦影系列产品手册



MONA

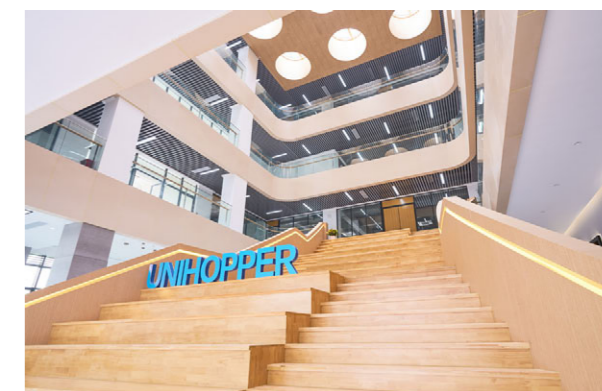
更懂**高端**家居的**五金**品牌

MORE UNDERSTANDING OF HIGH-END HOME HARDWARE BRANDS

库博梦影系列产品手册



Unihopper Intelligent industrial park
库博智能化工业园



Unihopper R & D Building
库博研发大楼

MILESTONES

品牌里程碑

2003

Unihopper founded the company in Guangzhou, and launch the first generation one-way soft closing drawer box.

库博在中国广州成立销售公司
推出第一代单缓冲骑马抽



2005

Unihopper decided to invest with the advanced technology from Europe and construct the production base in FOSHAN of China.

投建佛山生产基地
引进欧洲先进技术在中国进行生产



2007

Unihopper founded a union design group with designers from Europe and Columbia, and successfully launch the second generation two-way soft closing drawer box. The concept of twoway soft closing became popular around world ever since.

与欧洲、哥伦比亚设计师成立联合设计小组
推出第二代双缓冲骑马抽
双缓冲理念在此风靡全球



2008

Unihopper set up the marketing center and began to provide quality products and service for Chinese furniture customers.

组建营销中心
为中国家具客户
提供优质的产品和服务

2010

Unihopper successfully researched and developed the third generation interactive two-way soft closing drawer box and synchronize conceal slide.

研发第三代联动双缓冲骑马抽
同步隐藏导轨

2013

The union design group successfully researched and developed basket and wardrobe storage system (MOKA).

研发拉篮
衣柜收纳系统(摩卡系列)



2015

Unihopper successfully researched and developed the fifth generation interactive two-way soft closing drawer box-Magic box, and successfully hosted the "Night of Unihopper" in Beijing wardrobe annual conference.

第五代联动双缓冲骑马抽 - 魔力抽
北京衣柜年会举办“库博之夜”



2016

Unihopper successfully hosted "Unihopper summit conference" in Guangzhou, and announced Unihopper would globalize the brand.

在广州举办库博峰会
UNIHOPPER 库博全球化

2017

Unihopper successfully hosted the second "Unihopper summit conference". Same time, Unihopper Business College was founded.

第二届全球峰会
库博商学院成立

2019

Unihopper successfully hosted the third "Unihopper summit conference", and founded the new Unihopper production base and Unihopper brandday. Same year, Unihopper researched and developed the Phantom kitchen storage system and Co-box.

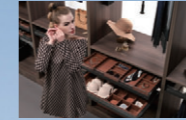
第三届全球峰会
新生产基地奠基
库博“9月9日品牌日”成立
研发魅影系列厨房收纳、酷力抽系列



2020

Unihopper become one of the home decoration drafting committee for Hinge, slide and basket. In the same year, Unihopper won the National High-tech Enterprise. Vanka, COKA have been introduced to the market.

成为全装修家居五金铰链、导轨、拉篮
使用标准主起草单位
荣获国家高新技术企业
梵卡、酷卡系列推向市场



2021

Unihopper new production base put into use officially. LINA, HUGGEN have been introduced to the market.

新产业园正式投入使用丽影、库格系列新品推出



2022

Unihopper international R&D center and the flagship showroom in the new headquarters fully open to the public, same time, Unihopper establish product R&D centre and product laboratory together with Vanke caizhu.

库博国际研发中心与
新总部旗舰产品体验厅开放
与万科采筑共建产品研发中心、
产品国家实验室

2023

We held the first "Unihopper Cup" National Terminal Designers Competition, initiating the first action in the Industry by making a solid sound for the professional home designers who stand as a group of product end-user

库博举办首届“库博杯”全国终端设计师大赛,开创行业新举,为家居业终端设计师发声。

BRIEF INTRODUCTION

集团介绍

Unihopper, a high-end customized home brand and the provider for comprehensive solutions of hardware supporting, implements the "Belt and Road" global development strategy to develop the global market. Offering the Uni-products, Uni-design, and Uni-service to every corner of the world.

After years of development, Unihopper has sole agents in dozens of countries and regions around the world, such as Netherlands, Canada, Russia, Slovenia, Argentina, Korea, Iran, Spain, Portugal, Ireland, Saudi Arabia, Colombia, South Africa, India, Southeast Asia Regions and China HongKong, Macao and Taiwan regions and so on; and now, Unihopper has become a major suppliers for many well-known cabinet and home brands in the world. In China, many listed furniture enterprises are our Uni-partners including OPPEIN, PIANO, SOGAL, ZBOM, Haier, OLO and so on. At the same time, Unihopper is also the major suppliers of Vanke, LONGFOR, POLY, China Overseas and many other real estate companies in China.

In 2005, Unihopper set up a production base and established a large storage center in Nanhai city in China, and a new intelligent Uni-industrial park of more than 120,000 square meters will also be put into use in 2021. As one of the best name and provider for the high-end customized furniture hardware industry, Unihopper has always upheld the brand values of "European quality, Chinese price", and now, has become a leading brand popularizing in many home furnishing companies and consumers all over the world. In the future, Unihopper will increase more investment in space enlarging, strengthen multi-dimensional development including product application, intelligent scene introduction, online and offline channel integration, striving to become the best home storage master around consumers' life.

Unihopper 库博是一家致力于全球化发展的定制家居五金及五金配套解决方案的供应商。库博实行“一带一路”全球发展战略，开放的胸怀开拓全球市场。将库博的产品、文化、理念推广到世界每一个角落。

经过多年的发展，UNIHOPPER 库博在荷兰、加拿大、俄罗斯、斯洛文尼亚、阿根廷、韩国、伊朗、西班牙、葡萄牙、爱尔兰、沙特、哥伦比亚、南非、印度、东南亚地区以及中国港澳台地区等全球数十个国家和地区设有独家代理，现已成为全球众多知名橱柜和家居品牌的主要供应商。在华许多上市家居企业均是库博合作伙伴，包括有：欧派、索菲亚、志邦、海尔、我乐等，同时库博品牌也是万科、龙湖、保利、中海等众多地产公司的主要供应商。

2005年，Unihopper 库博在中国佛山南海设立了生产基地并建立了大型仓储中心。全新超 12 万平方米智能化库博工业园已在 2021 年投入使用。作为一家高端定制家居五金供应商，Unihopper 库博一直坚持原创设计，“价格不上，品牌不下”的营销理念，已然成为全球众多家居企业和消费者追随的行业领导品牌，未来库博集团将加大更多空间投入，将产品运用、智能化场景导入、线上线下通道一体化等多维度发展，努力打造成为消费者身边最出色的家居收纳大师。



德国GS质量检测认证
GS Quality Test
Certification



英国皇冠ISO9001
质量管理认证
ISO 9001 Quality
Management Certification



国家高新技术企业
National High-
Tech Enterprise



家居五金铰链、抽屉导轨、拉篮
地产精英集团标准主起草单位
Standards Maker of Kitchen
Hardware Industry



共建研发中心
共建产品实验室 (CNAS)
R&D center and product
laboratory

COMPANY VISION

库博的理念

企业使命

CORPORATE MISSION:

满足人们对美好生活的向往是库博人的使命追求

To meet people's yearning for a better life is the mission pursuit of Unihopper

价值观

VALUES:

诚信、利他、奋斗、创新、理解、共进

Integrity, altruism, struggle, innovation, understanding, common progress

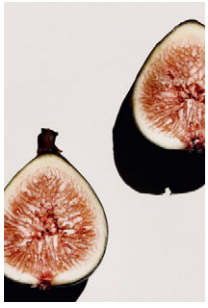




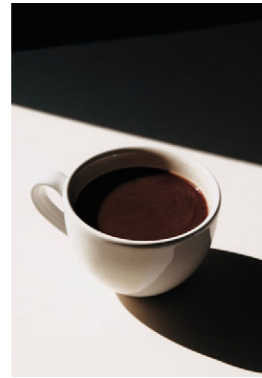
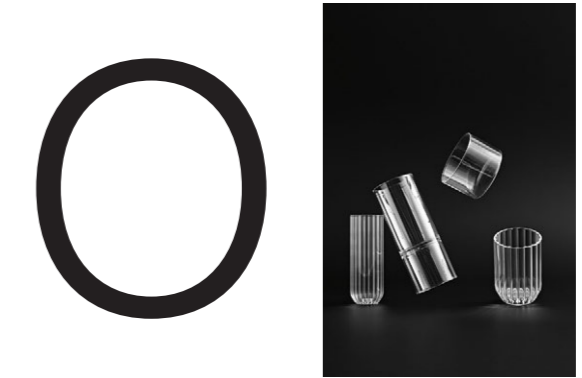
MONA STORAGE SYSTEM

梦影系列





M



MONA

STORAGE SYSTEM

MONA

设计理念

梦影 MONA 系列产品的由来
就是现代建筑都是应用很多条纹、纹理性的风格
这种风格很流行，越来越多

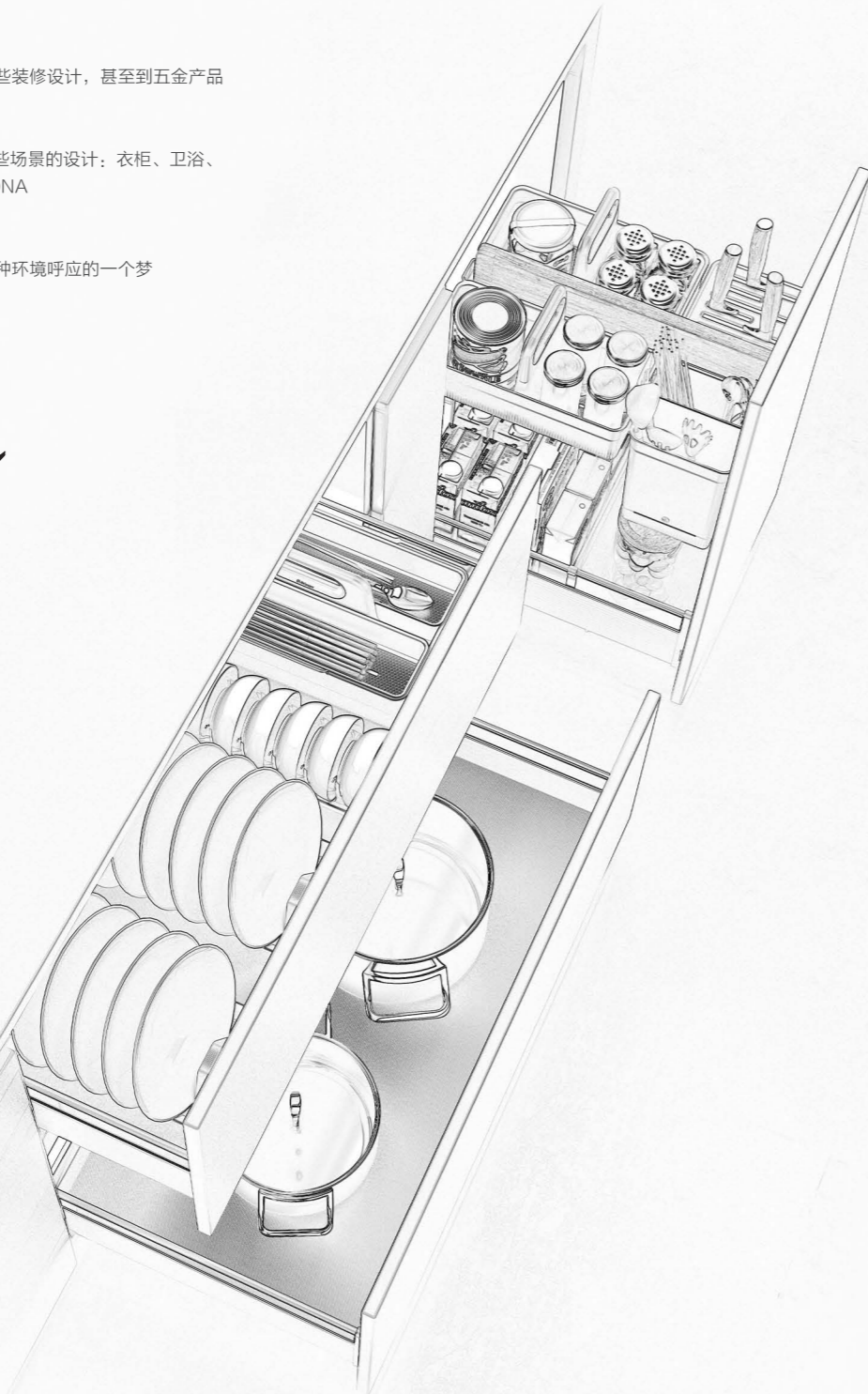
我们就想从建筑外观上作出一个呼应，到内在的一些装修设计，甚至到五金产品
应用都呼应到条纹、纹理形的现代风格

在 2021 年，就已经有这样的一个想法，也做了一些场景的设计：衣柜、卫浴、
厨房 一步一步完善，精心打磨才做出梦影 MONA

梦影 MONA 系列算是完成当时的一些想法
或者说是圆了当年这种从外到内的全建筑、全屋这种环境呼应的一个梦

库博品牌首席设计师

Juan



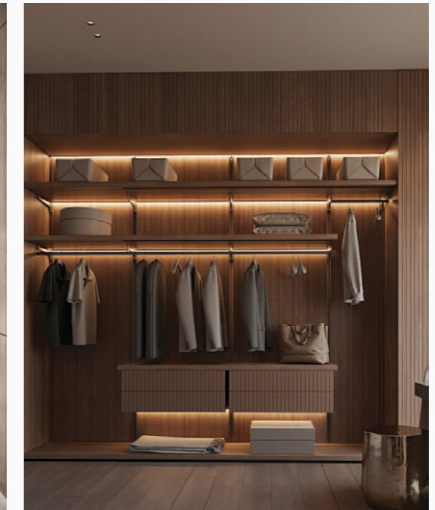
灵感来源 INSPIRATION SOURCE



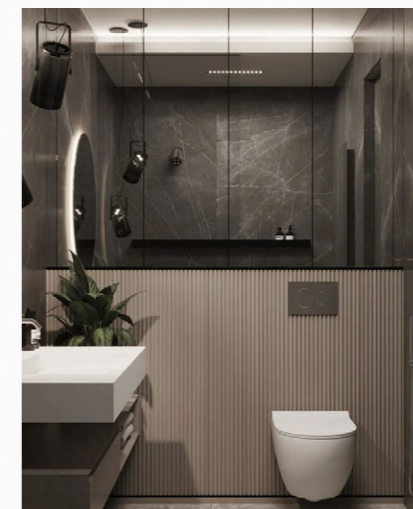
现代建筑 MODERN ARCHITECTURE



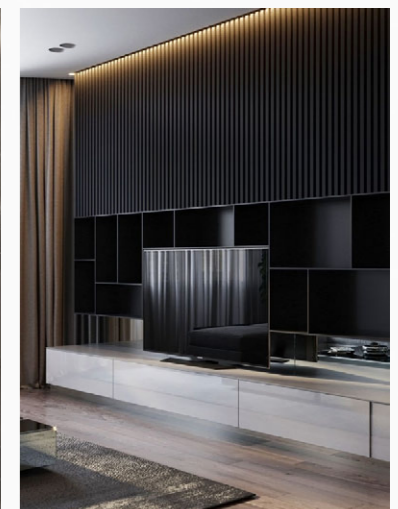
厨房空间 KITCHEN



衣柜空间 WARDROBE



卫浴空间 BATHROOM



客厅空间 LIVING ROOM



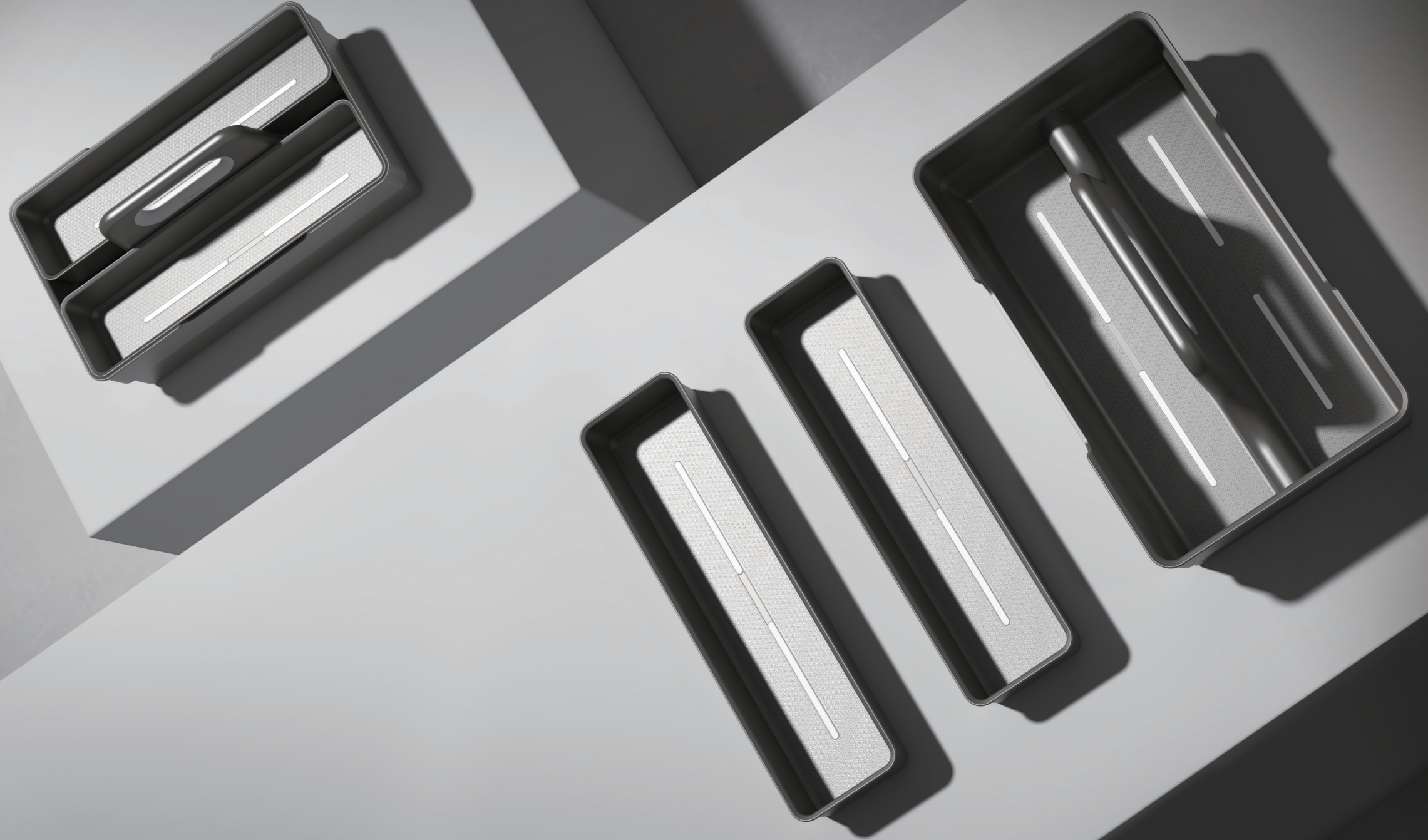
With the portable accessories of MONA, you can enjoy the camping.
 梦影 MONA 独特的设计，让露营变得轻巧且享受，让你感受生活 + 设计的和谐与美好。



MONA THREE SIDES BASKET-W/ DISH RACK

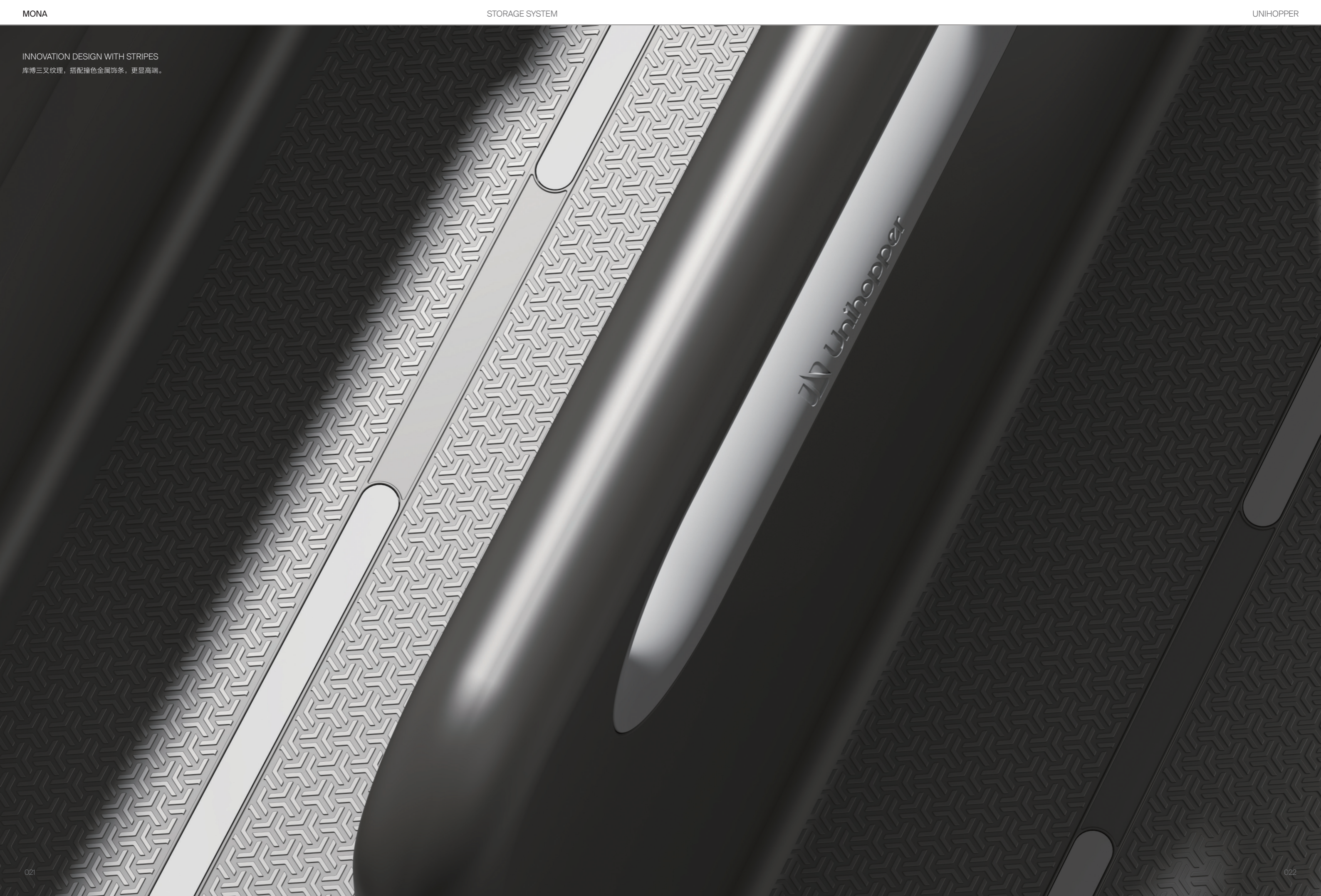
A portable and easy to carry dish rack offer you a more convenient and flexible life.

可移动式提篮，方便拿取，节约移动距离。双层空间，利用率更高，上下层均可单独使用。



INNOVATION DESIGN WITH STRIPES

库博三叉纹理，搭配撞色金属饰条，更显高端。



MONA SOFT CLOSING GLASS SWIVEL
PULL-OUT BASKET

梦影高柜联动拉篮





SYNCHRONIZED STRUCTURE BRINGS YOU EASY STORAGE AND SMOOTH OPENING. HEAVY DUTY SLIDE, WITH MORE LARGER LOADING CAPACITY, STORAGE KITCHEN STUFFS AS POSSIBLE AS YOU CAN.

独特的连动设计，在开门的同时带出全部篮子，方便存放物品。静音开启，使产品在开合过程中，始终保持平稳、顺畅的效果。重型导轨，强化产品的承载能力，并使拉出保持平稳。



MONA SOFT CLOSING GLASS SWIVEL PULL-OUT BASKET



THE PERFECT COMBINATION OF BEAUTY AND STORAGE HIGHLIGHTS YOUR KITCHEN LIFE.
去繁就简，窥见生活简练一面。美观与储物完美结合，让梦想厨房更贴近您的生活。



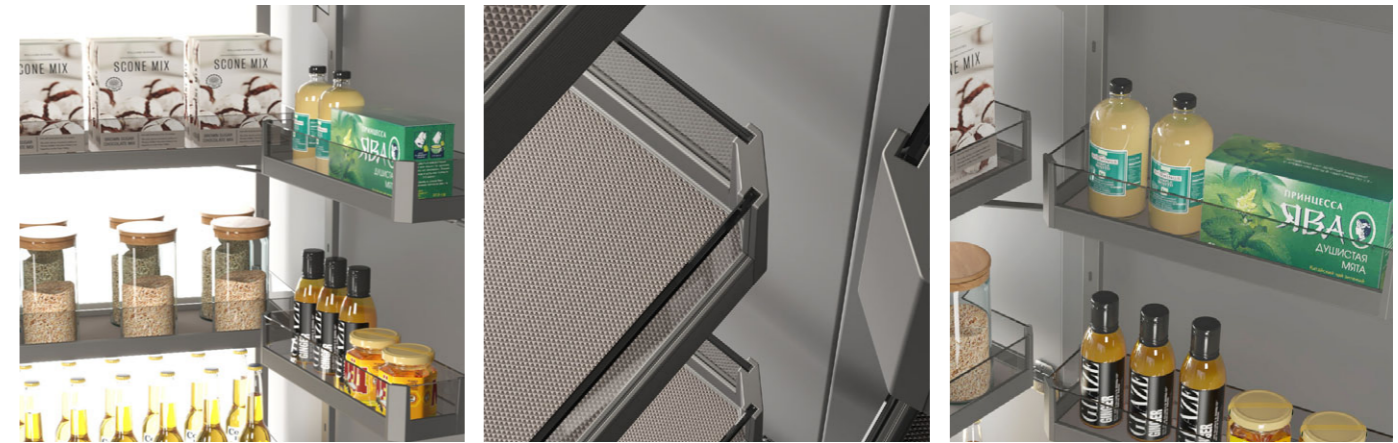


梦影高柜联动拉篮



→ FEATURES / 产品特点

- Perfect connection between basket and door soft closing
拉篮与门板巧妙连接，联动开启，缓冲关闭
- Innovation design with stripes
创新融合现代建筑外观流行的线条、纹理风格，时尚大气
- Flat glass basket and heavy duty slide
玻璃防滑六层篮，重型滑轨
- Clear classification, more storage space, convenient and smooth operation
分类存储各种物品，存储量大，收取便利
- Color: Gun grey
颜色：枪灰色



→ TECHNICAL DETAILS / 技术参数

MODEL / 型号	CABINET / 柜体 W (mm)	WIDTH x DEPTH x HEIGHT (mm) 宽 x 深 x 高 (mm) . 含导轨	PACKAGING / 包装数量
WB1208S.045EM.GG	450	410x490x1710	1套/2箱(6层)
WB1208S.060EM.GG	600	560x490x1710	1套/2箱(6层)



→ FEATURES / 产品特点

- Innovation design with stripes
创新融合现代建筑外观流行的线条、纹理风格，时尚大气

- Perfect connection between basket and door
coft closing
拉篮与门板巧妙连接，联动开启，缓冲关闭

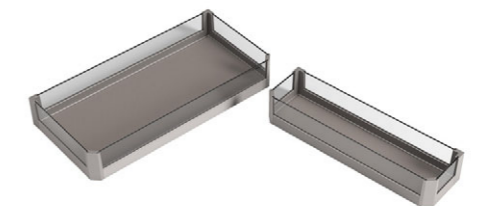
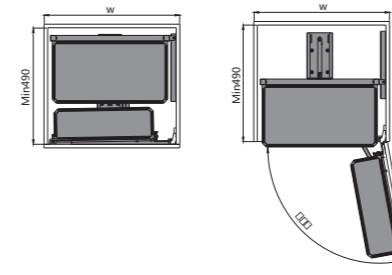
- Flat glass basket and heavy duty slide
玻璃防滑四层篮，重型滑轨

- Clear classification, more storage space,
convenient and smooth operation
分类存储各种物品，存储量大，收取便利

- Color: Gun grey
颜色：枪灰色



→ TECHNICAL DETAILS / 技术参数



MODEL / 型号	CABINET / 柜体 W (mm)	WIDTH x DEPTH x HEIGHT (mm) 宽 x 深 x 高 (mm) . 含导轨	PACKAGING / 包装数量
WB1208S.045CM.GG	450	410x490x1110	1套/2箱(4层)
WB1208S.060CM.GG	600	560x490x1110	1套/2箱(4层)

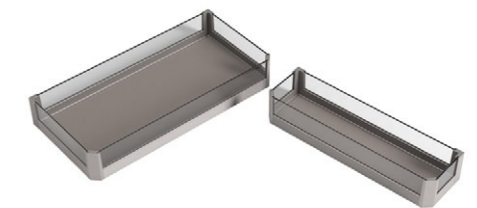
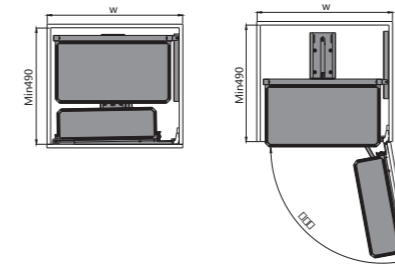


→ FEATURES / 产品特点

- Perfect connection between basket and door soft closing
拉篮与门板巧妙连接，联动开启，缓冲关闭
- Innovation design with stripes
创新融合现代建筑外观流行的线条、纹理风格，时尚大气
- Flat glass basket and heavy duty slide
玻璃防滑二层篮，重型滑轨
- Clear classification, more storage space, convenient and smooth operation
分类存储各种物品，存储量大，收取便利
- Color: Gun grey
颜色：枪灰色



→ TECHNICAL DETAILS / 技术参数



MODEL / 型号	CABINET / 柜体 W (mm)	WIDTH x DEPTH x HEIGHT (mm) 宽 x 深 x 高 (mm) . 含导轨	PACKAGING / 包装数量
WB1208S.045AM.GG	450	410x490x605	1套 / 箱 (2层)
WB1208S.060AM.GG	600	560x490x605	1套 / 箱 (2层)

MONA GLASS SOFT CLOSING TALL UNIT BASKETS

梦影缓冲高深拉篮

HEAVY DUTY SLIDE - THE KEY TO REACHING THE SMOOTH
OPENING AND CLOSING FOR TALL UNIT BASKET.

重型缓冲导轨技术也是实现高柜拉伸功能的关键，尤其在承重量达到相当程度的前提下，整体顺滑拉出时，重型缓冲技术都为使用者提供绝佳的功能保障，体现了支撑能力与收纳功能的完美平衡。



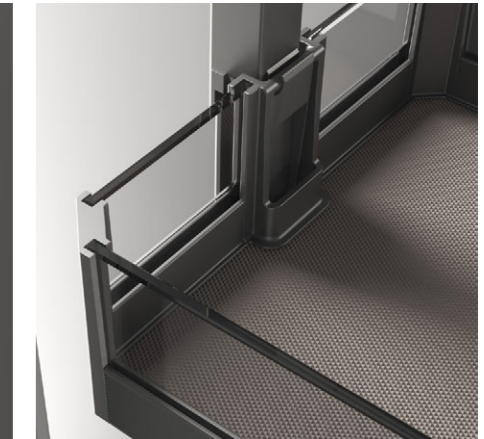
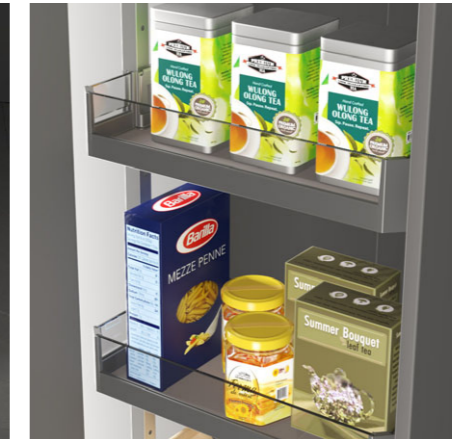
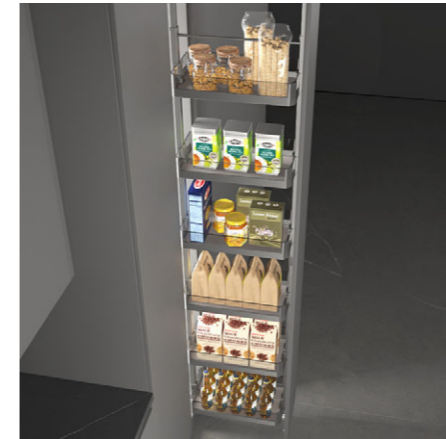


梦影缓冲高深拉篮

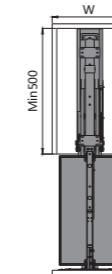


→ FEATURES / 产品特点

- Smooth and soft closing
抽拉顺畅，缓冲关闭
- Clear classification, more storage space, convenient and smooth operation
分类存储各种物品，存储量大，收取便利
- Innovation design with stripes
创新融合现代建筑外观流行的线条、纹理风格，时尚大气
- Flat glass basket and heavy duty slide
玻璃防滑六层篮，重型缓冲滑轨
- Color: Gun grey
颜色：枪灰色



→ TECHNICAL DETAILS / 技术参数



MODEL / 型号	CABINET / 柜体 W (mm)	WIDTH x DEPTH x HEIGHT (mm) 宽 x 深 x 高 (mm) . 含导轨	PACKAGING / 包装数量
WB1205S.015EM.GG	150	113x500x1970-2270	1套 / 3箱 (6层)
WB1205S.030EM.GG	300	245x500x1970-2270	1套 / 3箱 (6层)
WB1205S.040EM.GG	400	345x500x1970-2270	1套 / 3箱 (6层)

MONA THREE SIDES BASKET-FLAT

梦影三边拉篮



MULTI-FUNCTIONS MAKE YOUR KITCHEN MORE ELEGANT, CLEAN AND WELL-STORAGE.

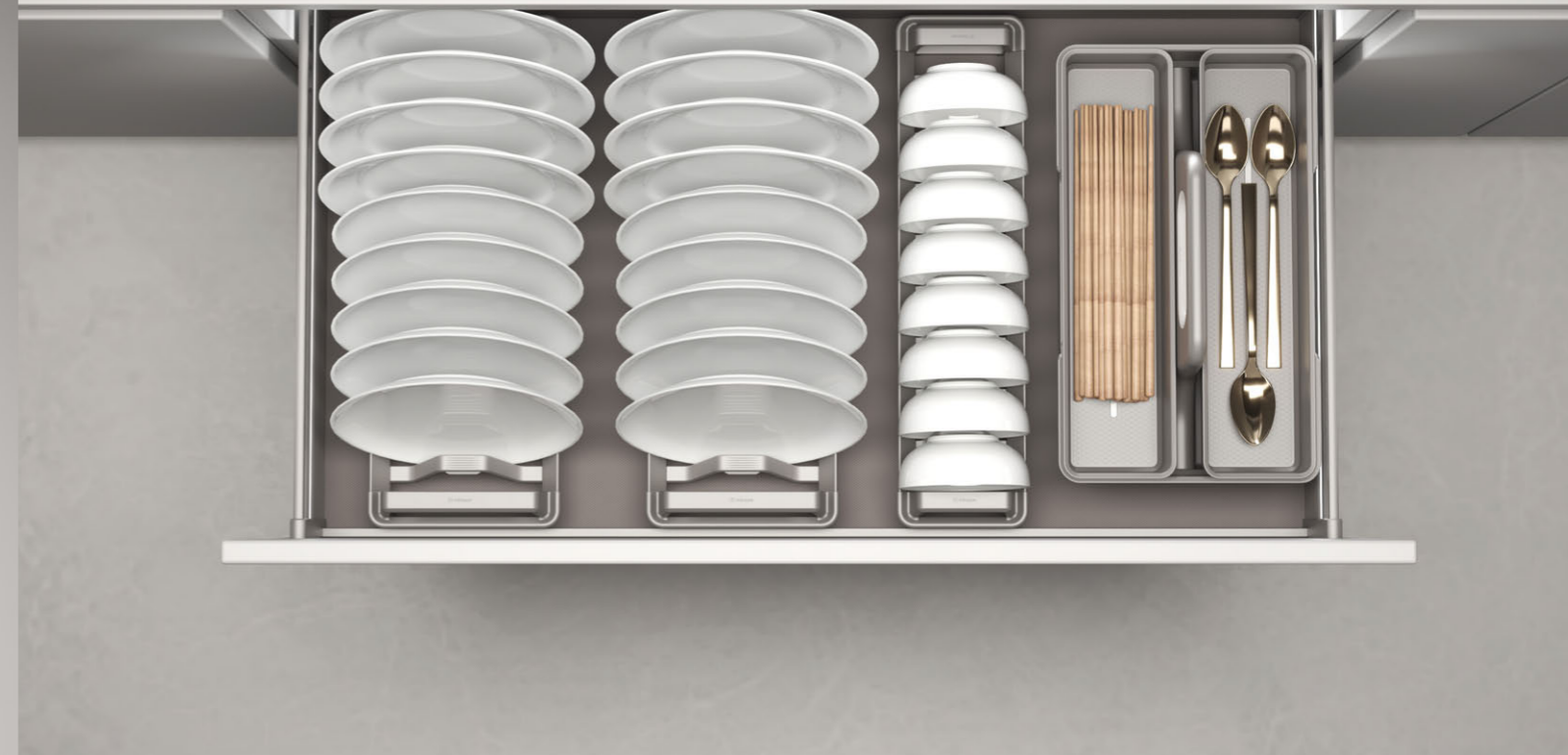
整洁高效的收纳功能，让您对所有物品一目了然，轻松高效的备餐。体验生活的最高舒适状态。

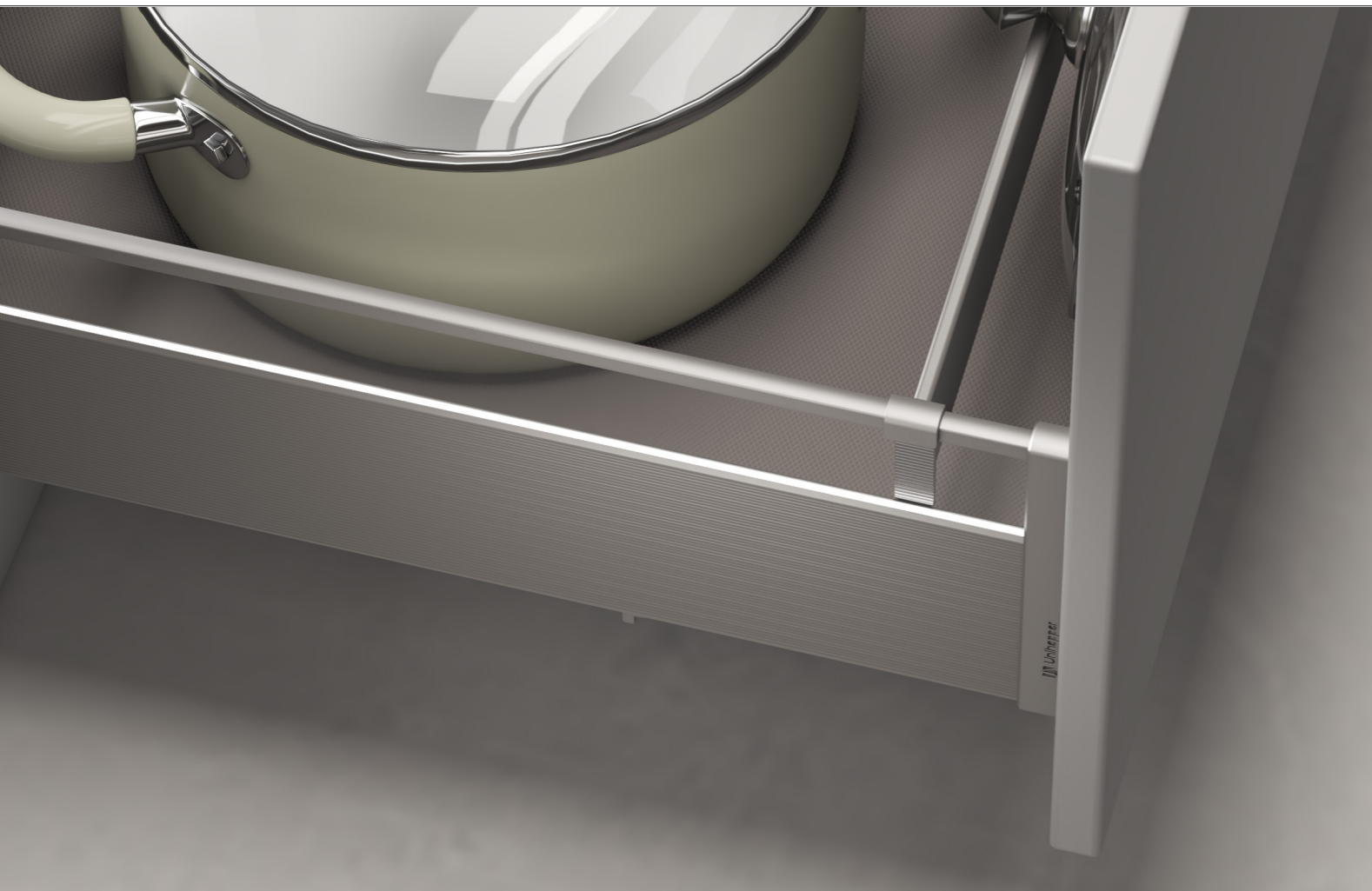
MONA THREE SIDES BASKET-W/ DISH RACK

梦影三边碗碟拉篮

A portable and easy to carry dish rack offer you a more convenient and flexible life.

专属区域，轻松整理。可移动式碗碟架，方便拿取，节约移动距离。碗碟架间距可调节，两侧有提手，让生活更便利灵活。





MONA POT BASKET

Free dividing space with movable dividers
活动式分隔杆，自由定义分隔收纳空间





梦影三边拉篮

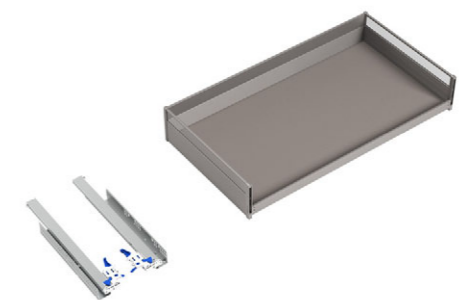
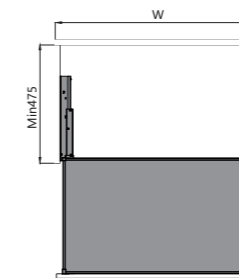


→ FEATURES / 产品特点

- Innovation design with stripes
创新融合现代建筑外观流行的线条、纹理风格，时尚大气
- Clip-on slow motion concealed slides
快装、双缓冲隐藏导轨，缓冲距离 53mm
- Optional for extra LED
可搭配带灯组件
- For pots, big plates and plastic holders etc
可存放各种锅类、大餐盘，碗等
- Color: Gun grey
颜色：枪灰色



→ TECHNICAL DETAILS / 技术参数



MODEL / 型号	CABINET / 柜体 W (mm)	WIDTH x DEPTH x HEIGHT (mm) 宽 x 深 x 高 (mm) . 含导轨	PACKAGING / 包装数量
WB2393S.060.GG	600	564x462x157	1套 / 箱
WB2393S.070.GG	700	664x462x157	1套 / 箱
WB2393S.075.GG	750	714x462x157	1套 / 箱
WB2393S.080.GG	800	764x462x157	1套 / 箱
WB2393S.090.GG	900	864x462x157	1套 / 箱



梦影锅具篮



→ FEATURES / 产品特点

- Innovation design with stripes
创新融合现代建筑外观流行的线条、纹理风格，时尚大气

- Clip-on slow motion concealed slides
快装、双缓冲隐藏导轨，缓冲距离 53mm

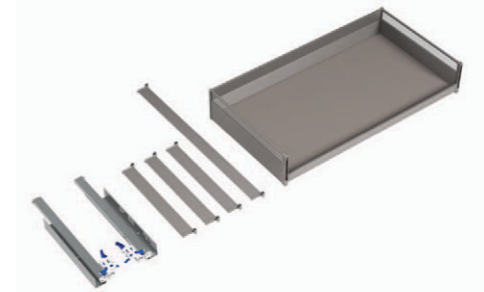
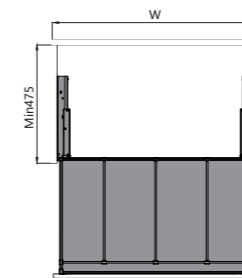
- Optional for extra LED
可搭配带灯组件

- Free dividing space with movable dividers, distinguish pots and plates in different size
活动式分隔杆，自由定义分隔收纳空间，区分尺寸不一的锅类、大餐盘等

- Color: Gun grey
颜色：枪灰色



→ TECHNICAL DETAILS / 技术参数



MODEL / 型号	CABINET / 柜体 W (mm)	WIDTH x DEPTH x HEIGHT (mm) 宽 x 深 x 高 (mm) . 含导轨	PACKAGING / 包装数量
WB2395S.060.GG	600	564x462x157	1 套 / 箱
WB2395S.070.GG	700	664x462x157	1 套 / 箱
WB2395S.075.GG	750	714x462x157	1 套 / 箱
WB2395S.080.GG	800	764x462x157	1 套 / 箱
WB2395S.090.GG	900	864x462x157	1 套 / 箱



梦影三边碗碟拉篮



→ FEATURES / 产品特点

- Innovation design with stripes
创新融合现代建筑外观流行的线条、纹理风格，时尚大气

- Clip-on slow motion concealed slides
快装、双缓冲隐藏导轨，缓冲距离 53mm

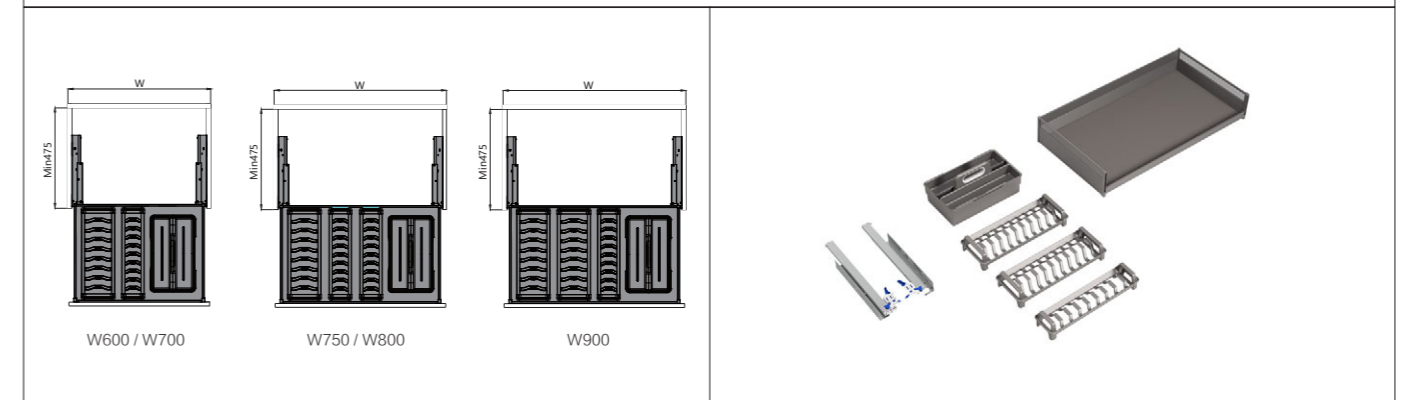
- For pots, big plates and plastic holders etc, Portable and easy to carry dish rack
可存放各种锅类、大餐盘，碗等，搭配可移动式碗碟架，方便拿取，节约移动距离

- Optional for extra LED
可搭配带灯组件

- Color: Gun grey
颜色：枪灰色



→ TECHNICAL DETAILS / 技术参数



MODEL / 型号	CABINET / 柜体 W (mm)	WIDTH x DEPTH x HEIGHT (mm) 宽 x 深 x 高 (mm) . 含导轨	PACKAGING / 包装数量
WB2394S.060.GG	600	564x462x198	1套 / 箱
WB2394S.070.GG	700	664x462x198	1套 / 箱
WB2394S.075.GG	750	714x462x198	1套 / 箱
WB2394S.080.GG	800	764x462x198	1套 / 箱
WB2394S.090.GG	900	864x462x198	1套 / 箱



MONA MULTI-BASKET

梦影调味拉篮

MONA MULTI-BASKET



Storage all kinds of cruets.

丰富的功能让厨房生活更优雅，可存放各种瓶罐等。



Special high-end bottom anti slip design by Unihopper. The components can be easily taken out, together with aluminum dividers to DIY the storage areas just for you.

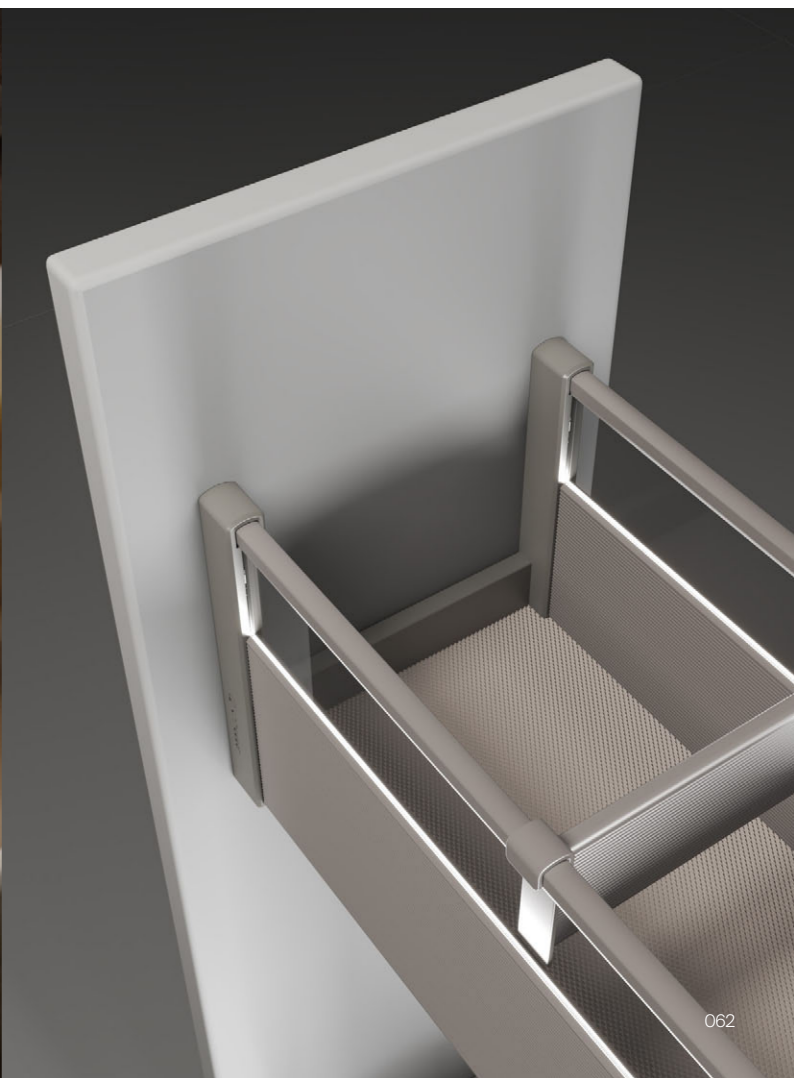
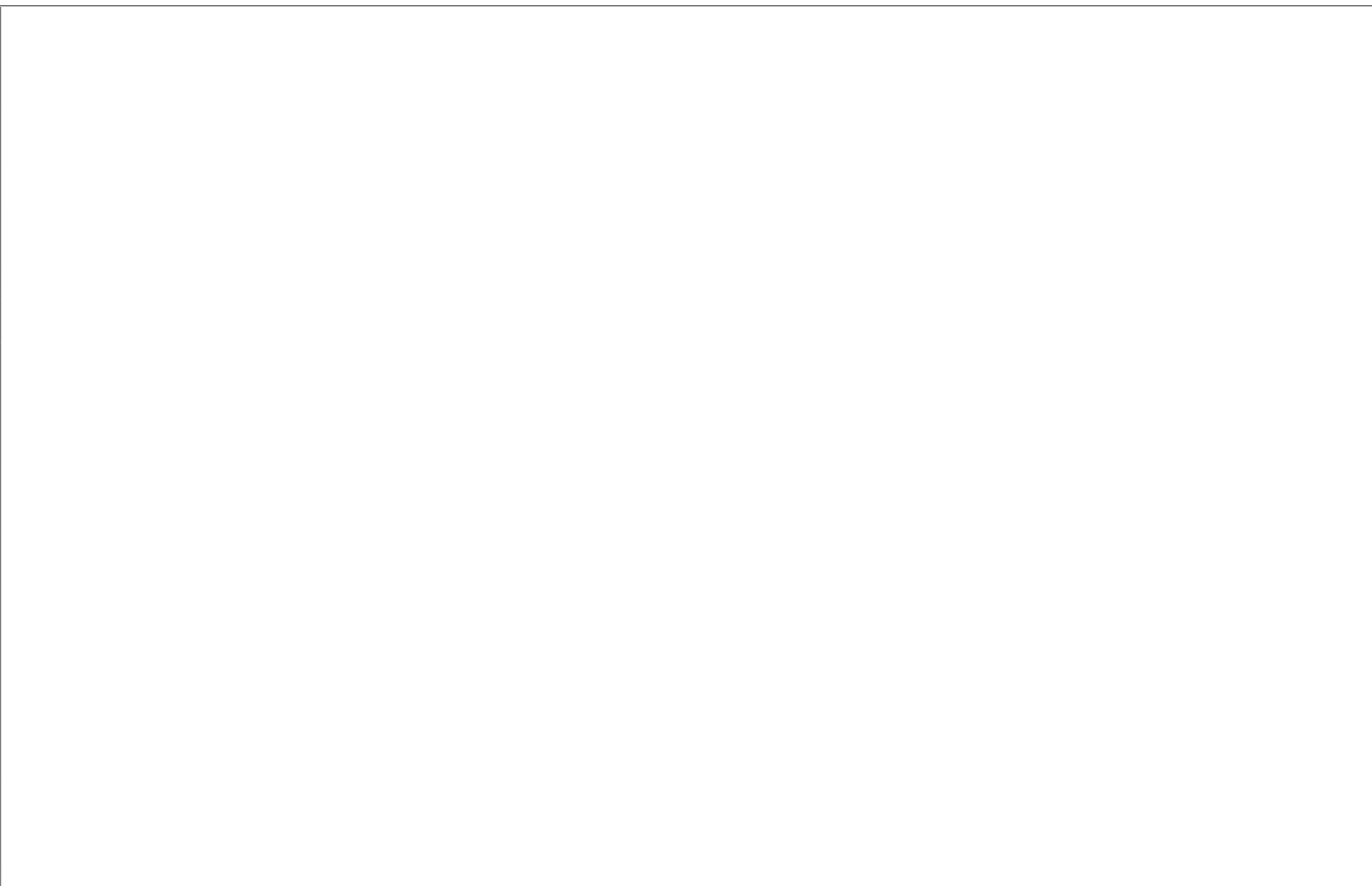
收纳组件均可拿取，底部搭配铝材分隔，可自由分隔存储区。收纳种类多样，可自由选择配件。



MONA SIDE MOUNTED BASKET

梦影侧装调味拉篮





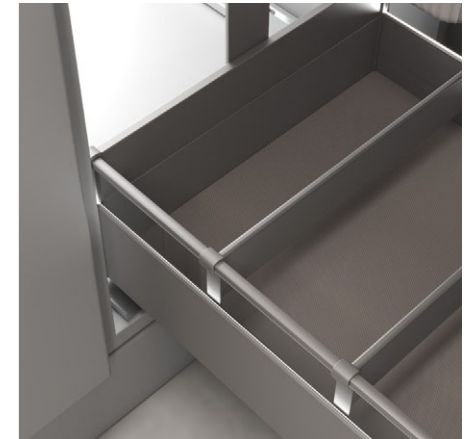


梦影调味拉篮



→ FEATURES / 产品特点

- Innovation design with stripes
创新融合现代建筑外观流行的线条、纹理风格，时尚大气
- Clip-on slow motion concealed slides
快装、双缓冲隐藏导轨，缓冲距离 53mm
- Storage all kinds of cruets, knives, forks, chopsticks, spoons and small tableware. With a moveable basket, easy to take
可存放各种调味瓶和刀叉、筷子、饭勺等小餐具，搭配可移动式提篮，方便拿取
- Optional for extra LED
可搭配带灯组件
- Color: Gun grey
颜色：枪灰色



→ TECHNICAL DETAILS / 技术参数

MODEL / 型号	CABINET / 柜体 W (mm)	WIDTH x DEPTH x HEIGHT (mm) 宽 x 深 x 高 (mm) . 含导轨	PACKAGING / 包装数量
WB2441S.030.GG	300	264x462x516	1套 / 箱
WB2441S.035.GG	350	314x462x516	1套 / 箱
WB2441S.040.GG	400	364x462x605	1套 / 箱
WB2441S.045.GG	450	414x462x605	1套 / 箱



梦影侧装调味拉篮

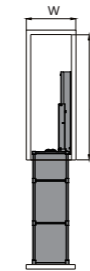


→ FEATURES / 产品特点

- Innovation design with stripes
创新融合现代建筑外观流行的线条、纹理风格，时尚大气
- Clip-on slow motion concealed slides
快装、双缓冲隐藏导轨，缓冲距离 53mm
- Adjustable divider, offering you a flexible space
分隔设计，间距随心调，灵活空间尽掌握
- Optional for extra LED
可搭配带灯组件
- Color: Gun grey
颜色：枪灰色



→ TECHNICAL DETAILS / 技术参数



MODEL / 型号	CABINET / 柜体 W (mm)	WIDTH x DEPTH x HEIGHT (mm) 宽 x 深 x 高 (mm) . 含导轨	PACKAGING / 包装数量
WB2396SR.020.GG	200	156x462x573	1套 / 箱

MONA GLASS MAGIC CORNER

梦影缓冲小怪物拉篮





MONA GLASS MAGIC CORNER, MAKE FULL USE OF THE CORNER SPACE, SYNCHRONIZED STRUCTURE WORKS SMOOTH OPENING AND CLOSING.

梦影缓冲小怪物，充分利用橱柜转角空间，通过精巧设计的联动系统，实现轻松开合，只需轻拉柜门，就能轻松取物，让你从容享受品质生活。



→ FEATURES / 产品特点

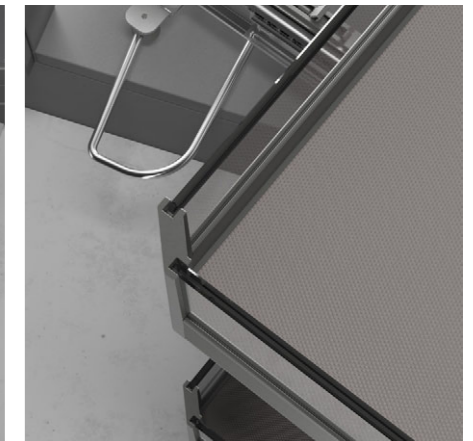
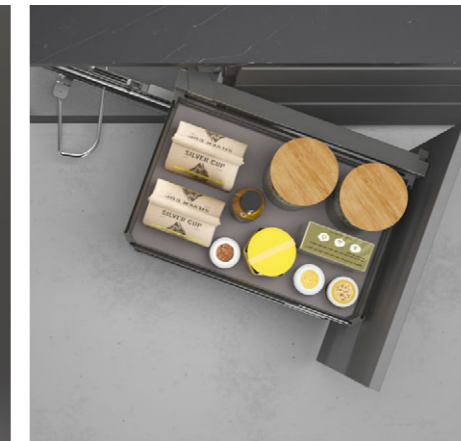
- Innovation design with stripes
创新融合现代建筑外观流行的线条、纹理风格，时尚大气

- Soft closing; Make good use of corner space
Basket freely combination, left and right installation for choice
轻柔开启、缓冲关闭，转角柜优化解决方案之一；左、右两边开启方向选择

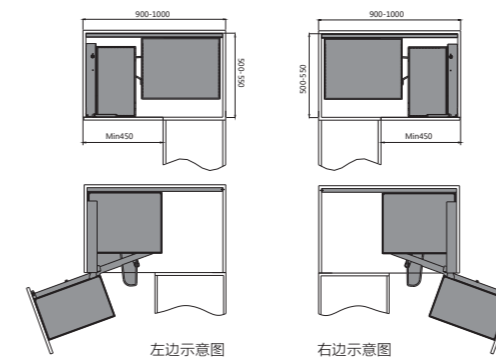
- For pots, big plates etc
可存放各种锅类、大餐盘，收纳瓶罐等

- High strength steel frame, movable glass basket
高强度钢架结构，可自由拆装玻璃防滑挂篮

- Color: Gun grey
颜色：枪灰色



→ TECHNICAL DETAILS / 技术参数



MODEL / 型号	CABINET / 柜体 W (mm)	WIDTH x DEPTH x HEIGHT (mm) 宽 x 深 x 高 (mm) . 含导轨	PACKAGING / 包装数量
WB2106SR.090M.GG	900	860-968x500-550x530	1套 / 箱
WB2106SL.090M.GG	900	860-968x500-550x530	1套 / 箱

MONA LIFT BASKET

梦影升降吊柜篮



UP-DOWN DESIGN, TO MAKE FULL USE OF SPACE FOR THE WALL CUPBOARD.
ABLE TO ADJUST THE PULLING CAPACITY, SAFE FOR TAKING OR BRINGING THINGS.

可升降设计，让吊柜空间利用变得平易近人。人性化设计，可根据储物重量调节下拉力和弹力，让上下取物更安全。





梦影升降吊柜篮



→ FEATURES / 产品特点

- Innovation design with stripes
创新融合现代建筑外观流行的线条、纹理风格，时尚大气

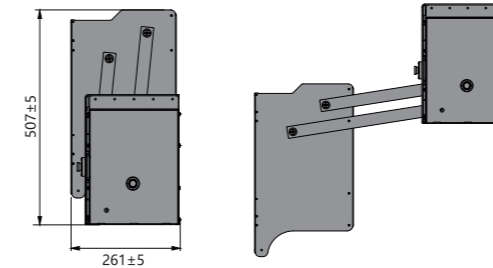
- Soft opening, soft closing, adjustable loading capacity, Reasonable use the space of wall cupboard
轻柔开启、缓冲关闭，三种载重可调，可以把吊柜空间巧妙转化为活动空间；吊柜优化解决方案之一

- Pans, big plates...
可存放各种锅类、大餐盘，收纳瓶罐等

- Strong frame, two layers basket
高强度钢架结构，两层防滑篮
- Updated damper, more smooth, much safer
升级油缸阻尼，缓冲更平顺，更安全
- Color: Gun grey
颜色：枪灰色



→ TECHNICAL DETAILS / 技术参数



MODEL / 型号	CABINET / 柜体 W (mm)	WIDTH x DEPTH x HEIGHT (mm) 宽 x 深 x 高 (mm)	PACKAGING / 包装数量
WB3312S.060M.GG	600	564x261x507	1套 / 箱
WB3312S.070M.GG	700	664x261x507	1套 / 箱
WB3312S.080M.GG	800	764x261x507	1套 / 箱
WB3312S.090M.GG	900	864x261x507	1套 / 箱

